

**WESTERN  
AUSTRALIAN  
MUSEUM**

.....

**ANNUAL REPORT  
2012–2013**



# MUSEUM LOCATIONS

## Western Australian Museum – Collections and Research Centre

49 Kew Street, Welshpool, WA 6106

## Western Australian Museum – Albany

Residency Road, Albany, WA 6330

## Western Australian Museum – Geraldton

1 Museum Place, Batavia Coast Marina, Geraldton, WA 6530

## Western Australian Museum – Kalgoorlie-Boulder

17 Hannan Street, Kalgoorlie, WA 6430

## Western Australian Museum – Maritime

(‘The Western Australian Maritime Museum’)

Victoria Quay, Fremantle, WA 6160

## Western Australian Museum – Perth

Perth Cultural Centre, James Street, Perth, WA 6000

## Western Australian Museum – Shipwreck Galleries

(‘The Shipwreck Galleries’) Cliff Street, Fremantle, WA 6160

## Western Australian Museum – Museum Administration

‘Wellington Building’, 150 William Street, Perth, WA 6000

•••••

This annual report is available in PDF and an accessible format on the Western Australian Museum website.

[www.museum.wa.gov.au/about/corporate-documents](http://www.museum.wa.gov.au/about/corporate-documents)

Copies are archived in the State Library of Western Australia, the National Library Canberra and the Western Australian Museum Library located at Kew Street, Welshpool.

For enquiries, comments or more information about staff or projects mentioned in this report, please visit the Western Australian Museum website [www.museum.wa.gov.au](http://www.museum.wa.gov.au) or refer to the details opposite for ways in which to contact the Museum.

**COVER PHOTO:** Exploring the *Secrets of the Afterlife: Magic, Mummies and Immortality in Ancient Egypt* exhibition. Western Australian Museum – Perth, May 2013. Image courtesy *Sabine Albers Photography*.

## POSTAL

Locked Bag 49, Welshpool  
Western Australia 6986

## STREET

49 Kew Street, Welshpool  
Western Australia 6106

## ELECTRONIC

[www.museum.wa.gov.au](http://www.museum.wa.gov.au)  
reception@museum.wa.gov.au  
Telephone: 61 8 9212 3700  
Facsimile: 61 8 9212 3882

•••••

Published by the Western Australian Museum  
ISSN 0083–8721

# CONTENTS

<b>Statement of Compliance .....</b>	<b>06</b>
<b>Message from the Chair .....</b>	<b>07</b>
<b>Message from the CEO .....</b>	<b>09</b>
<b>Destination Statement.....</b>	<b>11</b>
<b>Agency Overview .....</b>	<b>13</b>
Strategic Direction .....	13
Highlights of 2012–2013 .....	15
Awards .....	18
Honours .....	20
<b>Operational Structure .....</b>	<b>22</b>
Responsible Minister and Legislation .....	22
Board and Advisory Committees .....	22
Volunteers of the Western Australian Museum .....	23
Friends of the Western Australian Museum .....	24
Western Australian Museum Foundation .....	24
Organisational Chart .....	26
<b>Performance Management Framework .....</b>	<b>27</b>
<b>Agency Performance .....</b>	<b>29</b>
Learning and Growth .....	29
Customer .....	37
Financial .....	45
Processes .....	50
<b>Significant Issues Impacting the Agency .....</b>	<b>56</b>
Issues, Trends and Initiatives .....	56
<b>Disclosures and Legal Compliance .....</b>	<b>59</b>
Financial Statements .....	62
Detailed Key Performance Indicators information .....	96
<b>Summary of Key Performance Indicators .....</b>	<b>104</b>



<b>Other Financial Disclosures .....</b>	<b>105</b>
<b>Governance Disclosures .....</b>	<b>105</b>
Governance Framework .....	105
<b>Other Legal Requirements .....</b>	<b>106</b>
Expenditure on advertising, market research, polling and direct mail .....	106
Disability Access and Inclusion Plan outcomes .....	107
Compliance with Public Sector Standards and Ethical Codes .....	110
<b>Recordkeeping Plans .....</b>	<b>111</b>
<b>Government Policy Requirements .....</b>	<b>112</b>
Substantive Equality .....	112
Occupational Safety, Health and Injury Management .....	112
<b>Appendices .....</b>	<b>115</b>
2012–13 Board and Advisory Committees .....	115
Members of Committees .....	120
Sponsors, Benefactors and Granting Agencies .....	120
2012–13 Temporary Exhibitions .....	123
2012–13 Exhibitions created and made accessible by the Western Australian Museum at non-Museum sites .....	128

## OUR MISSION

We will inspire people to explore and share their identity, culture, environment and sense of place, and to experience and contribute to the diversity and creativity of our world.

## OUR VISION

To be an excellent and vibrant museum service valued and used by all Western Australians and admired and visited by the world.

*Traversing Antarctica* exhibition.  
Western Australian Museum – Maritime, 2012.  
Image courtesy *Pace Photography*.



# STATEMENT OF COMPLIANCE

FOR THE YEAR ENDED 30 JUNE 2013

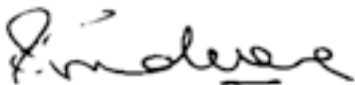
**Hon. John Day, MLA**  
**Minister for Culture and the Arts**

In accordance with section 63 of the *Financial Management Act 2006*, we hereby submit for your information and presentation to Parliament, the Annual Report of the Western Australian Museum for the financial year ended 30 June 2013.

The Annual Report has been prepared in accordance with the provisions of the *Financial Management Act 2006*.



Emeritus Professor Alan Robson  
Chair, Western Australian Museum Board of Trustees  
Chairman of Accountable Authority  
11 September 2013



Mr Steve Scudamore  
Member, Western Australian Museum Board of Trustees  
Member of Accountable Authority  
11 September 2013

# MESSAGE FROM THE CHAIR

I am delighted to introduce the Western Australian Museum's Annual Report for 2012–13 in what has been an outstanding year for this historic institution.

After years of speculation, the Museum has finally embarked upon its transformational journey to create a new Museum and I applaud all those who have worked tirelessly to achieve this result. I also commend the Western Australian Government for its commitment to a new Western Australian Museum, one that will be at the heart of its community – a place both for, and of, the people.

I am now in my second year as Chair of the Board of Trustees and continue to be impressed by the plethora of groundbreaking research and collections activity, the range of vibrant public programs and the meaningful community engagement the Museum undertakes.

As our growing list of awards recipients shows, many of our staff are leaders in their respective fields. Through them we deliver true public value, providing an authentic and authoritative voice that inspires people to explore and share their identity, culture, environment and



sense of place, and experience and contribute to the diversity and creativity of our world.

I am especially thrilled with the partnerships the Museum continues to forge in the wake of the unique relationship it has built with the British Museum, and the value that adds to all its operations.

It has been a year of high achievement in an increasingly pressured budget environment. The Museum has been relentless in its attempt to manage its business effectively.

As our journey towards a new Museum gathers pace, it is important to acknowledge the contributions of the Museum's sponsors, partners and benefactors, now and into the future. The Government may be providing the infrastructure, but it is the continued financial support of the public and private sectors that will be vital to the Museum realising its ambitions.

I thank my Board colleagues and our staff for their unstinting belief in the Museum, its value now and into the future, and their ability to see the enormous potential of what can be achieved.

I thank the Chief Executive Officer, Mr Alec Coles, for his outstanding leadership of the Museum.

And I would like to take this opportunity on behalf of all of us at the Western Australian Museum to thank the Minister for Culture and the Arts, the Hon John Day MLA, for his unstinting advocacy, enthusiasm and support for what we do now, and what we aspire to achieve.



**Emeritus Professor  
Alan Robson AO CitWA**

Chair, Board of Trustees  
Western Australian Museum





# MESSAGE FROM THE CEO

This year, the Western Australian Museum took its first significant steps towards creating a world class Museum for WA and one to be admired the world over. Following the Western Australian Government's formal commitment to redeveloping the Museum in the Perth Cultural Centre, funds were allocated in the Forward Estimates to begin the journey. In 2012–13 the Business Case for the New Museum Project was endorsed and the Museum officially moved into the Project Definition Phase. We now have architectural advisors and museum planners on board to assist in the critical development phase that will see the scope of the new Western Australian Museum defined.

As part of the project, long-overdue refurbishments to our Welshpool Collections and Research Centre are planned. The CRC project will consume just under \$18 million of the New Museum Project budget, resulting in a new wet store and laboratories and improved storage facilities which will enhance our collections management capability and ensure the safety and security of our collections for generations to come.

This is literally an extraordinary time in the life of the Western Australian Museum. Our important work in research and education, our pledge to contribute significantly to the health and well-being of all Western Australians, and our commitment to being inclusive and affirming can only be enhanced as we focus our efforts on delivering a world-class Museum service that reflects our



aspirations, demonstrates our confidence and engages our people. Our new Western Australian Museum will be a place of and for our people, expressing our identity, celebrating our culture and exploring our world.

I sincerely thank the Western Australian Museum Trustees for their commitment to our journey and in particular our Chair, Emeritus Professor Alan Robson AO, for his unwavering support. I would also like to thank our dedicated staff and volunteers, our friends and supporters individual and corporate, public and private.

Together, we have embarked upon an incredible journey, and will take this once in a lifetime opportunity to create a cultural legacy for all Western Australians.

**Alec Coles OBE**

Chief Executive Officer  
Western Australian Museum



Coffin of Psenhor, *Secrets of the Afterlife* exhibition. Western Australian Museum – Perth, 2013.

Image courtesy Sabine Albers Photography.



# DESTINATION STATEMENT

The Western Australian Museum is dedicated to community value which means we will:

- Care for Western Australia's collections representing the natural environment, the history, the stories and traditions of its people.
- Contribute to the conservation of environments, landscapes, heritage, sites and traditions.
- Promote and support tourism in and to Western Australia.
- Be environmentally, socially and economically sustainable.
- Ensure Aboriginal and Torres Strait Islander people are central to ownership, governance and development and express themselves through collections, stories and ideas.
- Contribute to community health and wellbeing through the involvement of users in the management of collections and the development of public programs.
- Be a resource to support the development of education and learning opportunities by and for the community.
- Help all the people of Western Australia express and explore their diversity, pride, identity and sense of place.
- Support and enforce the heritage legislation for which we are responsible.
- Promote academic research in the areas represented by our collections and activities.



*Unveiled* exhibition. Western Australian Museum – Perth, 2012.  
Image courtesy MCB Photographics.





# AGENCY OVERVIEW

## STRATEGIC DIRECTION

Creating a New Museum for Western Australia is the organisation's top priority. In December 2012 the Business Case for the New Museum was approved and following the State election in March 2013, the Museum launched into Project Definition Phase and began the work to recruit the teams necessary to develop a New Museum for Western Australia – one that will be at the heart of its community, a place both for and of our people.

In developing the New Museum, we want people to explore and share their culture; we want to promote tolerance and understanding; and we wish to provoke a sense of curiosity about our State – its unique history, amazing wildlife, ancient landscapes, abundant oceans and incredible people.

Western Australians have already begun contributing to the development of their New Museum, having been asked to share their thoughts on what it means to be Western Australian during the 2013 WA Day celebrations.

The Museum received more than 2,000 commentaries which will be used to help shape the content of what will be one of the State's most exciting and important infrastructure developments, the once-in-a-lifetime opportunity to create a New Museum.

The Museum is more than 120 years old so this is an opportunity that occurs only every few generations – the scale of the proposed development is rare even by international standards.

In asking people what they thought about WA, almost all spoke of their love of, loyalty to and affection for our State.

“The pioneering spirit of the West, the fact that everyone feels very lucky to live in this great state with its wonderful outdoor lifestyle. I also love that it is tolerant and multi-cultural. So there is an optimism and sense of well-being among the people who live here.”

— SHANE KELLY

“I feel very privileged to live in a place that is safe and carefree, with a beautiful capital city, spectacular countryside, terrific weather and most of all, wonderful people from many varied backgrounds and cultures. Life in WA is hard to beat!”

— MERY BABIC

It is for these people that we are creating a Museum that matches and expresses their pride in their State.

Western Australia’s New Museum will provide a new home for the multitude of stories from a wide range of people across our extraordinary State, a new base from which to explore our natural and cultural heritage, a new way of understanding Western Australia, its place in the world, and its status as economic powerhouse, tourist destination and new locus for global excellence in education and research.

At the heart of the creation process is a program of community engagement which will provide the foundation for the State Government’s significant funding commitment of \$428.3 million.

[www.museum.wa.gov.au/new-museum](http://www.museum.wa.gov.au/new-museum)

## OUR VALUES

**We are dedicated to community value which means we will be:**

- Accountable
- Inspirational, Inclusive and Accessible
- Enterprising and Excellent
- Sustainable
- We recognise Aboriginal and Torres Strait Islander Peoples as the first peoples of Australia

[www.museum.wa.gov.au/about/background-mission](http://www.museum.wa.gov.au/about/background-mission)

## HIGHLIGHTS OF 2012–13

### ORGANISATIONAL PRIORITIES

The Museum's five organisational priorities underpin the delivery of its strategic direction and have been used to identify highlights for the past year.

### COMMUNITY VALUE

**The Museum exists for the benefit of all the people of Western Australia and is accountable to them.**

- In December, the Business Case for the redevelopment of the Western Australian Museum was approved and, following the confirmation of Government policy priorities and commitment to the project in March, the Project Definition Phase for the New Museum began. Project funding includes much needed work on a new state-of-the-art wet store and laboratories at the Collections and Research Centre in Welshpool.
- The Museum hosted two major international exhibitions in the 2012–13 financial year. *Unveiled: 200 years of Wedding Glamour* was presented in partnership with the Victoria and Albert Museum in London; and *Secrets of the Afterlife: Magic, Mummies and Immortality in Ancient Egypt*, came to WA as a result of the WA Museum's special relationship with the British Museum.

### FINANCIAL SUSTAINABILITY

**The Western Australian Museum will strive to be financially sustainable.**

- Securing the first tranche of Government funding for the New Museum Project has allowed the Project Definition Plan phase for the Perth site to commence and completion of the Project Definition Plan for the works at Welshpool.
- Despite sequential reductions in Government funding throughout the year, the Museum continues to focus on providing the highest quality services to its audiences and other stakeholders.
- Work to identify opportunities to streamline restricted account management, to improve transparency and ensure funds are quarantined for the purposes required has been reviewed and completed.

## ABORIGINAL AND TORRES STRAIT ISLANDER PARTNERSHIPS

**The Museum will increase its efforts to ensure Aboriginal and Torres Strait Islander peoples are central to ownership, governance and program development.**

- In December, the Museum repatriated the Aboriginal Ancestral Remains of 21 individuals to Bunbury for reburial in country. The Museum has been returning Ancestral Remains to WA Aboriginal communities as part of the Return of Indigenous Cultural Property program for more than a decade.

The Museum works in consultation with its Aboriginal Advisory Committee and the Department of Aboriginal Affairs (formerly the Department of Indigenous Affairs) to repatriate remains to their communities. In addition to the repatriation of Aboriginal Ancestral Remains and cultural material, the Museum returned two sets of Maori Ancestral Remains to the New Zealand national museum, Te Papa Tongarewa, in October 2012.

*Kaarla Kaatijin* performance.  
Western Australian Museum – Perth, 2013  
Image courtesy *Yirra Yaakin Theatre Company*.





- The first collaboration between the WA Museum and Yirra Yaakin Theatre Company took place during the April school holidays. Performances of *Kaarla Kaatijin* were well received by families and young children.

## SERVICES DELIVERED WA-WIDE

### **The Museum will develop partnerships with regional communities, businesses and industries to share resources, knowledge and expertise.**

- The Museum has been asked to coordinate the interpretive element of the new ANZAC Interpretation Centre to be built in Albany, and opened in time for the 100th anniversary of the departure of the first ANZAC convoys, on November 1, 2014. This will be a significant event in Australia's Centenary of Service commemorations and the Museum is proud to be making such an important contribution.
- All three of the Museum's regional sites continue to strengthen their community partnerships, allowing them to excel in their roles as regional and community hubs. Geraldton was awarded two Museums and Galleries National Awards in the same financial year, Kalgoorlie-Boulder received a regional tourism award, and Albany hosted its seventh annual Perth International Arts Festival program.

## EMPOWERMENT

### **The Museum expects its staff to be creative and innovative and encourages initiative, leadership and new ideas from all parts of the organisation.**

- An excellent example of this is the delivery of Visual Impairment Awareness Training, in March 2013. Volunteer Coordinator at the WA Museum – Perth, Les Barradeen saw an opportunity to enhance the experience of visually impaired visitors by giving staff a greater understanding of the challenges they face when attending exhibitions. With the aim of ensuring the interpretive delivery within the Museum actually enhanced a sight impaired person's visit, Les arranged for the delivery of training to staff and volunteers from across the Museum's sites by Pam Barrass, a member of the Department for Culture and the Arts' Disability Services Planning Committee and advocate for people who are blind or have low vision. Using mainly touch and sound to interpret displays, it was highly successful – putting staff in the shoes of the visually impaired visitor and encouraging them to find creative ways of improving the Museum experience for everyone.

## AWARDS

The WA Museum – Geraldton won two successive national excellence awards for community-based projects that reflect on memories and the physical environment during 2012 and 2013. The Museums and Galleries National Awards, or MAGNAs, began in 2011 and recognise excellent work nationally in the categories of exhibition, public programs and sustainability projects.

In 2012, *Recollecting Sydney: A Call to Mind* was designed to assist and encourage relatives of the men lost on HMAS *Sydney* (II) in 1941 to share and document their memories. People were invited to bring photographs, letters and any other materials to the Museum, where an artist helped to create a shared memory and a poignant story from the people who recall the men of *Sydney* as husbands, fathers, brothers, uncles, cousins or friends.

**JUDGES' COMMENTS:** "This is a well thought out, innovative concept that engages the local and national community in the conservation of memory of a particular event of national significance. The project also helps to inform and enrich future commemoration of the event."

[www.museumsaustralia.org.au/site/magna2012\\_winners.php](http://www.museumsaustralia.org.au/site/magna2012_winners.php)

In 2013, *Seeing Change: A photographic story from Abrolhos fishers* provided a unique insight into a fishing community's experience of social and environmental change over a decade. It used a technique called 'photovoice' to capture the community's changing landscape and provide visual commentary, which was then displayed alongside scientific data of environmental change.

The program was a hugely successful collaboration between the Museum, the Western Australian Marine Science Institution, Curtin University, WA Department of Fisheries, Coastwest, ABC Open, the Northern Agricultural Catchment Council and the Abrolhos fishing community.

**JUDGES' COMMENTS:** "This exhibition covers material from social and natural history and contemporary topical issues. The exhibition is graphically strong and incorporates a great selection of images. The public outreach programs are comprehensive as is the involvement of the wider community."

[www.museumsaustralia.org.au/site/magna2013\\_winners.php](http://www.museumsaustralia.org.au/site/magna2013_winners.php)

*Seeing Change* exhibition. Western Australian Museum – Geraldton, 2012.



On 15 June, the Western Australian Museum – Kalgoorlie-Boulder took out Australia's Gold Outback Tourism Award at the Kalgoorlie-Boulder Chamber of Commerce and Industry Business Awards. The Museum is extremely proud to be recognised in this category and welcomes everyone to the Museum to see our award-winning exhibitions and displays.

[www.museum.wa.gov.au/about/latest-news/western-australian-museum-kalgoorlie-boulder-takes-out-top-prize](http://www.museum.wa.gov.au/about/latest-news/western-australian-museum-kalgoorlie-boulder-takes-out-top-prize)

A WA Museum partnership with Woodside Energy and the Society for Underwater Technology was awarded Good Practice Recognition at the 2012 Australian Business Arts Foundation (AbaF) awards for developing and presenting the *Immerse* exhibition.

The exhibition offered an insight into the amazing technology, much of it designed and built in WA, that allows us to explore and utilise the depths of our oceans and the resources that lie beneath.

[www.museum.wa.gov.au/immerse](http://www.museum.wa.gov.au/immerse)

In late 2012 the Museum's Terrestrial Zoology and Web teams, in collaboration with BHP Billiton and Benelongia, won the Environment Excellence award at the 2012 BHP Billiton Health Safety Environment and Community Awards, for developing *WAMinals* – a web application used to identify new and undescribed Short Range Endemic (SRE) species. The award triggered a \$20,000 donation from BHP Billiton to the Western Australian Museum Foundation to support the continued development of *WAMinals*. The project's development was supported by BHP Billiton and Rio Tinto and was released for use in January 2013.

[www.museum.wa.gov.au/catalogues/waminals/about-waminals](http://www.museum.wa.gov.au/catalogues/waminals/about-waminals)

The Museum's Manager for Online Services and Web Development Morgan Strong was awarded Information Technology Practitioner of the Year at the WA Institute of Public Administration Australia Achievement Awards in June. This very significant award recognises the prodigious amount of high-calibre work undertaken by Morgan in his role and its importance to the organisation.

[www.wa.ipaa.org.au/2013-Achievement-Award-Winners.aspx](http://www.wa.ipaa.org.au/2013-Achievement-Award-Winners.aspx)

## HONOURS

Professor Geoffrey Bolton – unstinting supporter of the WA Museum and until recently, Museum Trustee and Chair of our Maritime Archaeology Committee – was honoured at the 2013 WA Heritage Awards, receiving a special commendation for his Outstanding Voluntary Contribution to Heritage by an Individual, particularly for his work with the Museum and ANCODS (Australian and Netherlands Committee for Old Dutch Shipwrecks).

Chair of the WA Museum Board of Trustees, Emeritus Professor Alan Robson, was recognised in the 2013 Queen's Birthday Honours list. Emeritus Professor Robson, already a Member (AM) in the General Division of the Order of Australia, was made an Officer (AO) in the General Division for distinguished service to tertiary education through governance and administrative roles, to the advancement of scientific and medical research, and to the community.

WA Museum volunteer David Briegel received an Order of Australia Medal in the 2013 Australia Day Honours list for service to the community through charitable and historical organisations. David has made a significant volunteer contribution to a range of very worthwhile causes, including Princess Margaret Hospital. He has been a volunteer with the Museum's History Department for two days a week since 2004.





## MUSEUM'S SPIDER EXPERT WINS INTERNATIONAL AWARD

Dr Mark Harvey, the WA Museum's Head of Terrestrial Zoology, was recognised for his outstanding services to the international arachnological community with the presentation of the prestigious Pierre Bonnet Award in June, only the third time the award has ever been bestowed.

For more than 30 years, Mark has maintained a research program devoted to the systematics and biogeography of Australasian arachnids with major contributions to the study of pseudoscorpions, spiders and water mites. He has published more than 200 research papers, books and CDs and developed an online catalogue of pseudoscorpions available on the WA Museum website at [www.museum.wa.gov.au/research/databases/pseudoscorpions](http://www.museum.wa.gov.au/research/databases/pseudoscorpions)

Mark has been with the Museum since 1989.

# OPERATIONAL STRUCTURE

## RESPONSIBLE MINISTER AND LEGISLATION

### Responsible Minister

The Hon John Day MLA, (Minister for Planning; Culture and the Arts) is the Minister responsible for the Culture and the Arts Portfolio.

The Museum is a statutory authority within the Culture and Arts Portfolio.

### Enabling Legislation

- *Museum Act 1969 (WA)*

### Legislation and Regulations Administered by the Authority

- *Museum Regulations 1973 (WA)*
- *Maritime Archaeology Act 1973 (WA)*
- *Historic Shipwrecks Act 1976 (Cth)*; sections 10 (1), 11 (1), and 15 are administered by the Chief Executive Officer of the Museum, as Delegate in Western Australia for the Commonwealth Minister for Sustainability, Environment, Water, Population and Communities.

## BOARD AND ADVISORY COMMITTEES

### Western Australian Museum Board of Trustees

Section 10 of the *Museum Act 1969* provides that the Museum shall be governed by eight Trustees; seven of whom, including the Chair and Vice-Chair, shall be appointed by the Governor; and one of whom shall be the Director-General of the Department of Culture and the Arts.

Under the *Museum Act 1969*, the Trustees are responsible for the management of the affairs and property of the WA Museum.

The Board of Trustees met on five occasions in the reporting year.

## BOARD MEMBERS

**Emeritus Professor Alan Robson** AO CitWA Chair

**Ms Sara Clifton**

**Mr Ian Fletcher**

**Dr Katherine (Kate) Gregory** (appointed July 2012)

**Mr Steve Scudamore**

**Ms Irene Stainton**

**Ms Rubini Ventouras** (appointed July 2012)

**Mr Alan Ferris** ((ex-officio) from May 2013)

## OUTGOING MEMBERS

**Mr Wayne Osborn** (to July 2012)

**Ms Allanah Lucas** ((ex-officio) to May 2013)

**Advisory Committees**

- Western Australian Museum Aboriginal Advisory Committee (WAMAAC)
- Western Australian Museum — Geraldton Advisory Committee
- Western Australian Museum — Kalgoorlie-Boulder Advisory Committee
- Western Australian Museum — Maritime Advisory Committee
- Western Australian Museum Maritime Archaeology Advisory Committee

For further information on the Museum's Board and Advisory Committees, please refer to Appendices (page 115).

## VOLUNTEERS OF THE WESTERN AUSTRALIAN MUSEUM

Volunteers play an important role at the Western Australian Museum. Their ability to enhance the Museum's programs, events and operations is greatly valued. Through the engagement of volunteers, the Museum is able to extend its reach into the community, facilitating the two-way transfer of skills, knowledge and information.

In the reporting year, the Museum benefited from the commitment of 364 dedicated volunteers who provided vital assistance in many areas of its operations at both regional and metropolitan sites. Volunteers dedicated an estimated 22,116 hours service to the Museum, valued at \$691,695.

In response to the Auditor General's Report No. 1 – February 2012 – *Working Together: Management of Partnerships with Volunteers*, the Museum has finalised a suite of documents that now underpin its volunteer program.

## FRIENDS OF THE WESTERN AUSTRALIAN MUSEUM

The Friends of the Western Australian Museum are an integral part of the Museum's support structure, promoting and encouraging the Museum's development journey for nearly 20 years. The Museum is grateful for the ongoing support it receives from all Friends members, particularly as the planning and creation of a New Museum for Western Australia gathers pace.

The Friends membership at 30 June 2013 was 190.

## WESTERN AUSTRALIAN MUSEUM FOUNDATION

The profile and activities of the Museum are enhanced by acquisitions, exhibitions and scientific research made possible, in part, by the generosity of sponsors and benefactors. The Foundation seeks to build this giving tradition by encouraging and recognising donations and corporate sponsorships and partnerships, gifts of objects, bequests and endowments.

### Highlights of the past year include:

- Long-time advocate of the Museum and Chief Scientist of WA, Professor Lyn Beazley, generously directed \$50,000 of funding from her receipt of the 2012 Governor's Giving Award to develop a scholarship program for young people to work at the Museum.
- Singapore Airlines (SIA) and SIA Cargo generously supported both the *Unveiled* and *Secrets of the Afterlife* major exhibitions from the UK.
- Woodside supported the *Immerse* touring exhibition as Principal Partner which was displayed at the 2012 Royal Agricultural Show. This was highly successful with more than 56,300 visitors in eight days – an average of 7,000 visitors a day, taking in one in seven visitors to the Show. When these figures are added to the Karratha and WA Museum – Perth attendances, *Immerse* received some 104,000 visitors making it the second most visited exhibition after *A Day in Pompeii*.



- A generous donation from the McClements Foundation supported the acquisition of an Aurelio Costerella gown, and purchase of state-of-the-art showcases for the *Unveiled: 200 years of Wedding Glamour* exhibition, which were repurposed for *Secrets of the Afterlife* and will continue to be used into the future.
- Museum Fellow Dr Harry Butler AO continued his longstanding support of Museum fieldwork through the Maggie Butler Bequest Fund for projects, to be completed in 2013–14.

## WESTERN AUSTRALIAN MUSEUM FOUNDATION BOARD OF GOVERNORS

**Ms Tracey Horton** (Chair)

**Hon Julie Bishop** MP

**Mr Nick Brasington**

**Mr Geoff Duncan**

**Dr Marina Hogan**

**Mr Tim Lester**

**Mr Justin Mannolini**

**Mr James McClements**

**Ms Sara Clifton** (ex-officio)

**Mr Alec Coles** (ex-officio)

## WESTERN AUSTRALIAN MUSEUM FOUNDATION INVESTMENT COMMITTEE

**Mr Justin Mannolini**

**Mr James McClements**

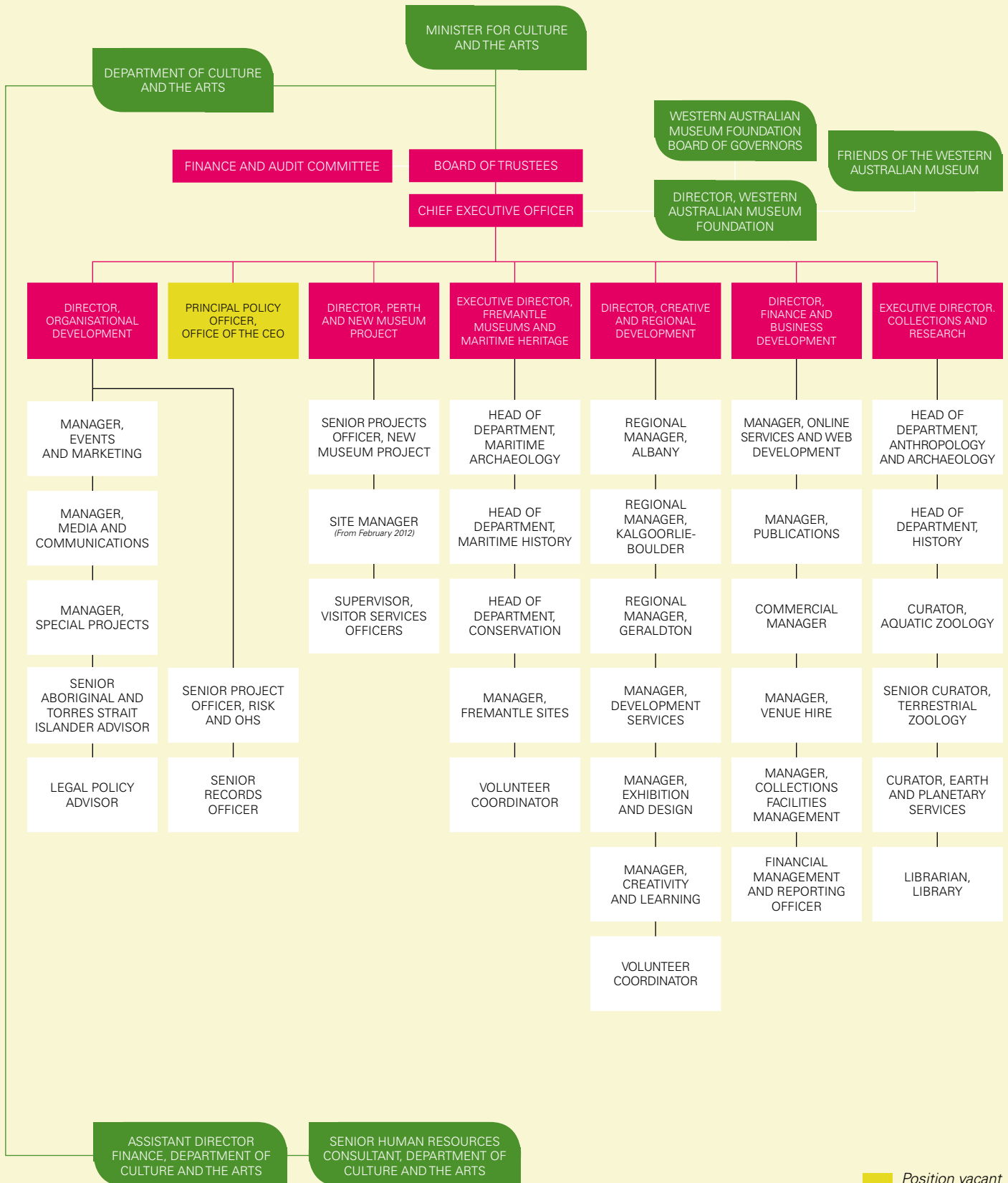
## SPONSORS, BENEFACTORS AND GRANTING AGENCIES

Generating income for the Museum amid a tightening economic environment is always a challenge and so it is with immense gratitude that the Foundation acknowledges the generous donors, benefactors and corporate sponsors and partners who have helped make 2012–13 an exceptional year. Without their valuable contribution the Museum's work would be infinitely harder.

**A full list of our generous sponsors, benefactors and granting agencies is shown in the appendices.**

# ORGANISATIONAL CHART

Structure of the Museum 2012–13.



■ Position vacant

# PERFORMANCE MANAGEMENT FRAMEWORK

The Museum's annual budget is included in the State Government Budget Statements under Culture and the Arts.

The Department of Culture and the Arts (DCA) co-ordinates reporting of Key Performance Indicators at the whole-of-portfolio level. The structure aligns the portfolio and the Museum's desired outcomes with the Government's Strategic Planning Framework.

## **Government Desired Outcome**

Western Australia's natural, cultural and documentary collections are preserved, accessible and sustainable.

## **Service**

Museum Services

## KEY EFFECTIVENESS INDICATORS

### **Preservation**

Extent to which Western Australia's natural, cultural and documentary collections, that require preservation, are preserved

### **Accessibility**

The number of accesses to Western Australia's natural, cultural and documentary collections per capita.

Per centage of visitors satisfied with the services associated with accessing the Museum collection.

**Sustainability**

Value of collection renewal, content development, expansion and/or maintaining the physical integrity of the collection as a proportion of collection value.

## KEY EFFICIENCY INDICATOR

**Service****Indicator**

Museum Services

Average Cost of Museum Services per Museum visitor or person accessing collection.

# AGENCY PERFORMANCE

The Museum's reporting on its performance over the past financial year has again followed the 2011–14 Strategic Plan's balanced scorecard approach, and links to the Government's Goals outlined in the Public Sector Commission's Annual Reporting Framework.

[www.publicsector.wa.gov.au/node/67](http://www.publicsector.wa.gov.au/node/67)

## LEARNING AND GROWTH

### Link to Government Goals

**Goal 3** – Results-based service delivery

**Goal 4** – Stronger focus on the regions

**Goal 5** – Social and environmental responsibility

The Western Australian Museum is committed to the learning and growth of its customers, staff and volunteers through the achievement of its five Learning and Growth Strategic Aims.

**LG1**

**Ensure Aboriginal and Torres Strait Islander (ATSI) peoples are central to ownership, governance and development of our collections and programs.**

### Outcomes:

- To better understand our audiences the Museum has quantified visitor demographics and found our popularity with Aboriginal and Torres Strait Islander peoples is remarkably strong with seven per cent of all visitors to the Museum identifying as Aboriginal and Torres Strait Islander people, with the State's Aboriginal and Torres Strait Islander population of 2.5 per cent.

### Achievements:

- A three-year partnership has been developed between Yirra Yaakin Theatre Company and the Western Australian Museum to provide authentic, contemporary Aboriginal content by Aboriginal performers.

[www.museum.wa.gov.au/about/latest-news/yirra-yaakin-takes-museum-stage](http://www.museum.wa.gov.au/about/latest-news/yirra-yaakin-takes-museum-stage)



- The Museum has appointed Senior Aboriginal and Torres Strait Islander advisor Ms Sam Cook to work across the organisation but particularly to provide high level advice on Aboriginal matters and to liaise closely with the Museum's Aboriginal Advisory Committee.
- Development of Aboriginal cultural awareness training pilot 'Immerse'. Designed as a 360 degree engaged space with direct links to local Aboriginal history.

*"An incredible experience, left me buzzing for a few days afterwards." — 'IMMERSE' FEEDBACK*

LG2

**Create and share our knowledge with our users.**

### Outcomes:

- Produced and distributed 57 peer-reviewed research-papers, 14 non-refereed reports, 26 conference papers, eight popular publications and 128 unpublished reports to consultants; one book, 66 book chapters and one in-house journal.
- Undertook 26 collaborative research projects, two involving international partner agencies and institutions.
- Conducted 45 field trips in WA, 11 interstate and five international field trips.
- Significantly increased website visitation overall.
- Based on user feedback, the online services team has improved the usability, functionality and efficiency of the Museum website, optimising it for the organisation's growing mobile market.

### Website Visitation:

		2011–12	2012–13
Visitors	increased by nearly 80%	677,343	1,218,230
Page views	increased by nearly 69%	13,022,579	21,958,404
Video views	increased by 87%	256,075	479,674

Male of the newly discovered  
'Shaggy Spined Bee' species.



### Achievements:

- Museum staff and associates were again at the forefront of adding to the knowledge and understanding of the State's natural environment with the description of 52 new animal species and one new mineral species. The animal species included:

- *Prethopalpus attenboroughi* – a spider not much bigger than a pin head and found only on one island off the Queensland coast, named in honour of the world's foremost naturalist and broadcaster Sir David Attenborough.

[www.museum.wa.gov.au/about/latest-news/new-species-named-sir-david-attenborough](http://www.museum.wa.gov.au/about/latest-news/new-species-named-sir-david-attenborough)

- *Urodacus butleri* – a scorpion discovered on Barrow Island off the State's North-West shelf had to be named after the discoverer's childhood hero, Dr Harry Butler, according to Dr Mark Harvey from the Museum.

[www.museum.wa.gov.au/about/latest-news/new-scorpion-celebrates-renowned-conservationist](http://www.museum.wa.gov.au/about/latest-news/new-scorpion-celebrates-renowned-conservationist)

- A new bee – the male of the 'Shaggy Spined Bee' described as looking like it was wearing straw-covered long baggy trousers, discovered by WA Museum research associate Dr Terry Houston. This new species is yet to be scientifically named.

[www.museum.wa.gov.au/about/latest-news/new-bee-creates-buzz-ravensthorpe](http://www.museum.wa.gov.au/about/latest-news/new-bee-creates-buzz-ravensthorpe)

- Visiting researchers – the WA Museum attracted extended visits by researchers, including from:
  - the Northern Territory – Emeritus Professor Phil Alderslade studied the soft corals from the Woodside expeditions;
  - the United States – University of Michigan PhD student Jingchun Li discovered at least three species of commensal clams on irregular urchins in the WA Museum Collection; and
  - Brazil – trapdoor spiders attracted Brazilian PhD student Laura Miglio from the Laboratório de Aracnologia, Museu Paraense Emílio Goeldi, Belem as part of her revision of Actinopodidae in Brazil.

A new species of trapdoor spider from the Pilbara bioregion – *Aname mellosa*.  
Image © The West Australian.





## 4 MILLION REASONS WHY WAM MATTERS

The Western Australian Museum also makes its collections available on-line through a number of external websites, providing access to researchers across the globe. The CSIRO's Atlas of Living Australia (ALA) website recently published figures showing that over a 12-month period, the Museum's digitised biological records were accessed more than four million times by multiple users.

[www.csiro.au/en/Outcomes/Environment/Biodiversity/The-Atlas-of-Living-Australia.aspx](http://www.csiro.au/en/Outcomes/Environment/Biodiversity/The-Atlas-of-Living-Australia.aspx)



## LG3

**Understand and respond to our audiences and communities****Outcomes:**

- As part of the Museum's continuing efforts to better serve its users, audience development specialists Morris Hargreaves McIntyre (MHM) were contracted to provide specialist market information. Their report covered visitation from October 2012 to June 2013.
- The MHM *Visitor 360°* report found the Museum's diverse audiences were dominated by Learning Families who wanted an educational visit (32 per cent), that there were more female visitors than male (56 per cent compared to 44 per cent) and that 15 per cent of visits were made by people over the age of 65. Understanding visitor diversity will enable the Museum to better respond to the full range of visitor expectations.

**Achievements:**

- For the first time, formative through to post exhibition research was conducted with the *Unveiled: 200 years of Wedding Glamour* exhibition. The research showed 100 per cent of visitors were aware of the exhibition before arriving, suggesting the marketing and media campaign for *Unveiled* was highly effective.

## LG4

**Develop a highly skilled, motivated and flexible workforce****Outcomes:**

- Areas of focus for training over the past year included cultural awareness training (see LG1 page 29), ethical decision making, occupational health and safety, disability access and inclusion, and leadership development.
- This year, staff attended a total of 936 training sessions. This represents 3,068 hours of training (or 713 staff training days) across a range of learning areas.



- The Museum's total cash expenditure on staff training for the year was \$88,670. This represents a 107 per cent increase in the Museum's investment in developing its workforce. Not all training is delivered at a cash cost and the total commitment, when staff time is added to this, is significantly greater.
- 230 staff completed Accountability and Ethical Decision Making training with an average pass mark of 94.25 per cent, well above the minimum pass mark of 80 per cent.

### **Achievements**

- For the first time in its 10 year history, two senior staff travelled to Sydney to participate in the Museums Leadership Program organised by Museums Australia and the Gordon Darling Foundation.



### **Develop effective volunteer culture**

#### **Outcomes:**

- 364 volunteers undertook various tasks including assisting visitors, and supporting the Museum's curatorial and conservation staff with research, cataloguing and fieldwork presentation.

#### **Achievements:**

- A suite of information supporting volunteer programs has been developed following the Auditor General's Audit of Volunteer Partnerships across Government.
- The Museum's analysis for 2012–13, highlighted the significant and valuable contribution of its volunteer partnerships. Overall, volunteers donated a generous 22,116 hours of their time, the cash value of this donation is estimated at \$691,695.
- 55 volunteers donated their time to assist visitors to the *Unveiled: 200 years of Wedding Glamour* exhibition. So far, 110 volunteers have donated their time to the *Secrets of the Afterlife* exhibition.
- The Maritime History Research Database has been compiled largely through the efforts of volunteers documenting some 30,000 individual ship histories.

## NOAH'S EXPERIENCE

As is often the case, a training program created for one person has developed into a learning opportunity for everyone involved. When 20-year-old Noah Ryan decided he wanted to work as a volunteer for the WA Museum's *Secrets of the Afterlife* exhibition, the fact he is confined to a wheelchair proved to be no barrier at all. Noah's open approach to the role and his success in it has provided a framework for future volunteering opportunities for other people with disabilities.

Noah has been able to provide input and feedback on the ease, or otherwise, for wheelchair-bound patrons to get around the Museum, while becoming a welcoming and friendly member of the volunteer group assisting visitors to the exhibition. Noah has been assisted with in-kind support from Edge Employment and his school, Atwell College.



# CUSTOMER

## Link to Government Goals

**Goal 1** – State building – major projects

**Goal 3** – Results-based service delivery

**Goal 4** – Stronger focus on the regions

[www.publicsector.wa.gov.au/node/67](http://www.publicsector.wa.gov.au/node/67)

The Western Australian Museum exists to deliver public value to, and for the benefit of, the community. It is committed to delivering quality experiences to its audiences through the achievement of its five Customer Strategic Aims.



**Provide the highest standards of customer service and user experience in all that we do.**

## Outcomes:

	2008–09	2009–10	2010–11	2011–12	Target 2012–13	Actual 2012–13
<b>Visitor satisfaction</b>	68%	65%	87%	87%	85%	97% <sup>(1)</sup>

(1) Note change in survey methodology and instrument from 2011–12 to 2012–13 to improve efficacy of data – change from self-selecting respondents using online kiosk to randomly selected semi-assisted. As a result, caution should be exercised in making comparisons between 2011–12 and 2012–13 ratings.

- The Museum commissioned a qualitative survey to determine expectations and experiences of key stakeholders across three core business areas – the New Museum Project, Museum Development Services and corporate clients. 100 per cent of users said they were satisfied with the Museum’s service and 100 per cent of users intended to continue their relationship with the Museum.

“Delightful people ... professional, engaged and engaging, technically incredible ... world leaders in that group ... passionate about their work. Makes me have trust and confidence in the information as well.”

— FROM THE IPSOS UNDERSTANDING KEY STAKEHOLDER EXPERIENCES REPORT 2013.

### Achievements:

- The MHM Visitor 360 report found the Museum experience either met or exceeded the vast majority of visitor expectations, with 50 per cent of visitors saying it was much better than expected; 21 per cent saying it was a little better than expected, 27 per cent said it was just as expected and two per cent said it was a little worse than expected. 92 per cent of all visitors said they would definitely recommend a visit to the Museum.
- More than 22,000 people attended the Perth International Arts Festival's Chevron Festival Gardens in the Museum grounds in February and March. Overall visitation was significantly higher than the 14,500 people who attended last year.

C2

**To contribute to the health and wellbeing of our communities by facilitating people's exploration of their identity, culture, environment and place in the world.**

### Outcomes:

- The Government has recognised the Museum's significant contribution to the State by reaffirming its \$428.3 million commitment to a New Museum for Western Australia.
- This year, visitors to the Museum explored the world and travelled through time on journeys of discovery through 45 temporary exhibitions. From Antarctica to Egypt, from ancient civilisations to almost yesterday, people were encouraged to learn more about their physical and emotional worlds.
- An extensive range of public programs, tours, lectures, performances and other activities that attracted 158,458 attendances.

### Achievements:

- The continuing five-year partnership with the British Museum which delivered the *Secrets of the Afterlife: Magic, Mummies and Immortality in Ancient Egypt* exhibition.  
[www.museum.wa.gov.au/whats-on/afterlife](http://www.museum.wa.gov.au/whats-on/afterlife)
- *Unveiled: 200 years of Wedding Glamour* was a collaborative effort with London's Victoria and Albert Museum.  
[www.museum.wa.gov.au/unveiled](http://www.museum.wa.gov.au/unveiled)



- Australians have played a significant role in exploring the Earth's southern-most continent and *Traversing Antarctica: the Australian experience* was a national travelling exhibition of rare artefacts and interactive displays celebrating our nation's connection with the icy continent.

[www.museum.wa.gov.au/whats-on/traversing-antarctica](http://www.museum.wa.gov.au/whats-on/traversing-antarctica)

- *Seeing Change: A photographic story from Abrolhos fishers* was a highly successful community-led collaboration that captured the effects of climate change on fishers' daily lives.

[www.museum.wa.gov.au/whats-on/seeing-change-photographic-story-abrolhos-fishers](http://www.museum.wa.gov.au/whats-on/seeing-change-photographic-story-abrolhos-fishers)

- The 50<sup>th</sup> anniversary of the discovery of the *Batavia* shipwreck was celebrated at the Western Australian Museum – Geraldton.

## EXHIBITION FOR ANZAC DAY

A small but poignant exhibition of WWI postcards curated in-house by senior history curator Stephen Anstey was on display at the WA Museum – Perth for ANZAC Day.

*One Hundred Postcards* reveals the extraordinary war stories of six young men, as told to one Kalgoorlie-based home-nurse through the dozens of postcards each soldier sent her.

During the war, writing to soldiers was encouraged by the Government as a way of lifting morale and the men's messages – while subject to censorship – provide a fascinating glimpse of their lives during service and their impressions of the countries in which they fought.

*One Hundred Postcards* came about entirely through meticulous research conducted by the Museum's History Department. It was a touching tribute to our soldiers on ANZAC Day and a timely reminder of the many powerful stories that reside within the WA Museum's collections.

[www.museum.wa.gov.au/research/research-areas/social-history/resources/100-postcards](http://www.museum.wa.gov.au/research/research-areas/social-history/resources/100-postcards)





## C3

**Promote tourism within and to Western Australia.****Outcomes:**

Annual total visitation by region of residence

	Perth metro	Regional	Interstate	International	Total
2011–2012	301,782	133,139	204,147	248,526	<b>887,594</b>
2012–2013	303,235	112,388	250,731	212,791	<b>879,145</b>

- 29 per cent of the Museum’s visitors this year were from interstate and 24 per cent were from overseas, compared to 23 and 28 per cent respectively, last year.

**Achievements:**

- The Western Australian Museum – Kalgoorlie-Boulder was awarded the Goldfields Tourism Award. See Awards section (see page 19).

## C4

**Deliver a Western Australian-wide museum service.****Outcomes:**

- Significant visitation to WA Museum’s regional sites:

Western Australian Museum – Albany	2010–11	2011–12	2012–13
Overall visitors	91,043	90,714	85,916
School groups	5,133	4,078	4,157
Total visitors	96,176	94,792	90,073

**Western Australian Museum – Geraldton**

Overall visitors	40,547	46,546	41,430
School groups	2,460	1,579	1,701
Total visitors	43,007	48,125	43,131

**Western Australian Museum – Kalgoorlie-Boulder**

Overall visitors	77,058	88,361	88,515
School groups	2,272	2,008	1,887
Total visitors	79,330	90,369	90,402

- The Museum's Development Service works closely with organisations across the State. This year they:
  - provided services to five local governments;
  - made 27 site visits to other client organisations;
  - held eight workshops throughout WA; and
  - worked with three Aboriginal communities.
- The Museum created the following exhibitions for display by community organisations across the State:

Exhibition	Lending Institute	Venue	Dates	Visitations
<i>Immerse: Exploring the Deep</i>	Western Australian Museum	Karratha	23/06–22/07/12	5,046
<i>Zuytdorp display</i>	Western Australian Museum	Kalbarri	01/06–01/12/12	4,000
<i>The Loss of the Koombana</i>	Western Australian Museum/Port Hedland Historical Society	Port Hedland	20/03/12–permanent	1,800
				<b>10,846</b>

Refer page 128 for full table of exhibitions created and made accessible by the Western Australian Museum at non-museum sites.

**Achievements:**

Western Australian Museum – Kalgoorlie-Boulder continues to showcase the rich history of the State's Eastern Goldfields and its mining heritage. Highlights this year include:

- Curating and developing *This Working Life* exhibition in-house.

[www.museum.wa.gov.au/museums/kalgoorlie-boulder](http://www.museum.wa.gov.au/museums/kalgoorlie-boulder)

Western Australian Museum – Albany provides exhibitions, public programs, educational programs and information on the unique natural and social history of the region. Highlights this year include:

- Capacity crowds attended the final lecture in the popular *In the Wild West* series, given by Dr Harry Butler himself. Dr Butler also hosted a workshop for the Young Naturalists Club.
- Increasingly successful partnership with Perth International Arts Festival's Great Southern Program, now in its seventh year.

[www.museum.wa.gov.au/museums/albany](http://www.museum.wa.gov.au/museums/albany)

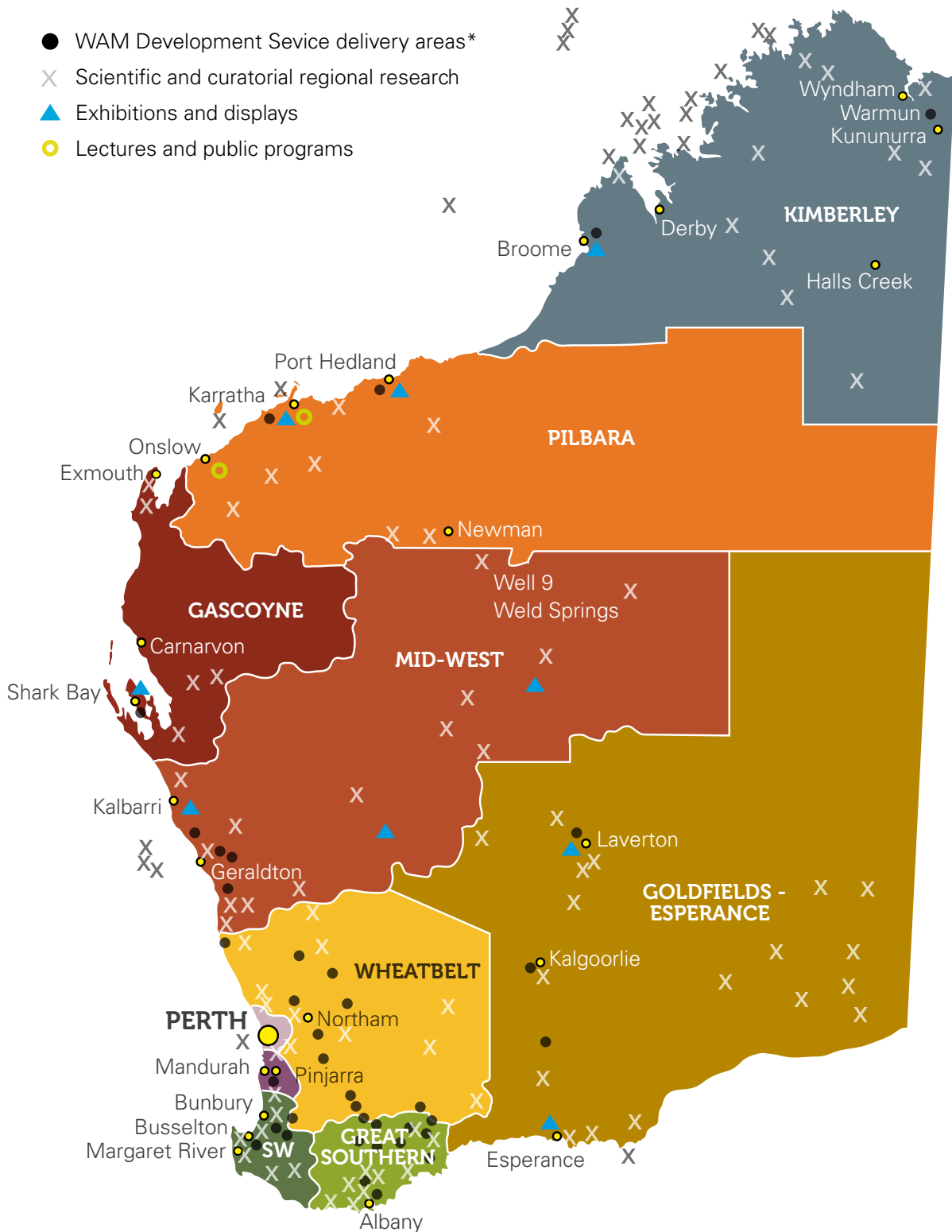
Western Australian Museum – Geraldton celebrates the rich heritage of the land, sea and people of the Mid-West. Highlights this year include:

- Winning two MAGNA awards in one financial year – one for public programs and one for temporary exhibitions. See Awards section (page 18).
- Hosting and participating in community celebrations for the 50<sup>th</sup> anniversaries of the discoveries of the Dutch shipwrecks *Vergulde Draeck* and *Batavia*.

[www.museum.wa.gov.au/museums/geraldton](http://www.museum.wa.gov.au/museums/geraldton)

Communities throughout Western Australia are also being assisted by the Museum's Development Service in preparing their own exhibitions to commemorate the 'Centenary of Service', an initiative from the Commonwealth Department of Veterans Affairs to commemorate 100 years of continued service since WWI. The Museum is working with the Returned and Services League on these important community-based projects.

SERVICE PROVISION TO REGIONAL WESTERN AUSTRALIA 2012–13



\* Development Service locations not to scale



C5

**Develop the WA Museum brand to reflect, support and deliver our mission and achieve our vision.****Outcomes:**

- A significant increase in the WA Museum's media exposure flowed from diversifying the range of media activity. Media coverage for print, radio and television for 2012–13 totalled 2,196 monitored items representing a 20.8 per cent increase on the previous financial year.  
[www.museum.wa.gov.au/about/latest-news](http://www.museum.wa.gov.au/about/latest-news)
- The Museum's social media presence also grew with a new account established on image sharing site Instagram, and a doubling of the Museum's Twitter (1.240) and Facebook (4.050) usage from 2011–12, with an average of 20 people a day continuing to sign up.
- The Museum continues to promote awareness of its key themes:
  - being Western Australian;
  - exploring Western Australia;
  - discovering the World; and
  - revealing the Museum.

**Achievements:**

- More focused media and marketing activity has led to increased visits to the WA Museum, particularly from first time visitors. Annual satisfaction tracking reports show that Museum-generated marketing and media material was the main source of information leading to visitation for 61 per cent of all first time visitors.

## FINANCIAL



### Link to Government Goals

**Goal 2** – Financial and economic responsibility

**Goal 5** – Social and environmental responsibility

[www.publicsector.wa.gov.au/node/67](http://www.publicsector.wa.gov.au/node/67)

The Western Australian Museum recognises the need to exercise responsible financial management, while at the same time exploring new and creative ways to increase revenue opportunities and maximise its earning potential. This is achieved through four Financial Strategic Aims.



**Maximise financial sustainability by operating within our means, but maximising those means.**

### Outcomes:

- The Museum received \$0.210 million in Commonwealth grants and contributions, remaining unspent funds include grants from the Commonwealth Scientific and Industrial Research Organisation (\$0.086 million), the Department of Sustainability, Environment, Water, Population and Communities (\$0.058 million), Online Zoological Collections of Australian Museums (\$0.037 million) and the Australian Biological Research Study (\$0.005 million).
- The Museum received \$1.305 million from State grants and contributions, including grants from Department of Environment and Conservation (\$1.243 million), the Department of Culture and the Arts (\$0.083 million) and Gascoyne Development Commission (\$0.001 million).

### Achievements:

- Commonwealth grant of \$438,248 to re-image the HMAS *Sydney* (II) and HSK *Kormoran* wrecks.

## RE-IMAGING AUSTRALIA'S GREATEST NAVAL TRAGEDY

A Commonwealth grant of nearly half a million dollars will enable the Museum, Curtin University and other project partners to better investigate, manage and interpret the site of Australia's greatest naval tragedy – the World War II wrecks of HMAS *Sydney* (II) and the HSK *Kormoran*. The grant will allow the use of cutting edge, high resolution imaging technology to survey the wrecks in much greater detail than was originally possible so they can be properly protected, conserved and interpreted for future generations.

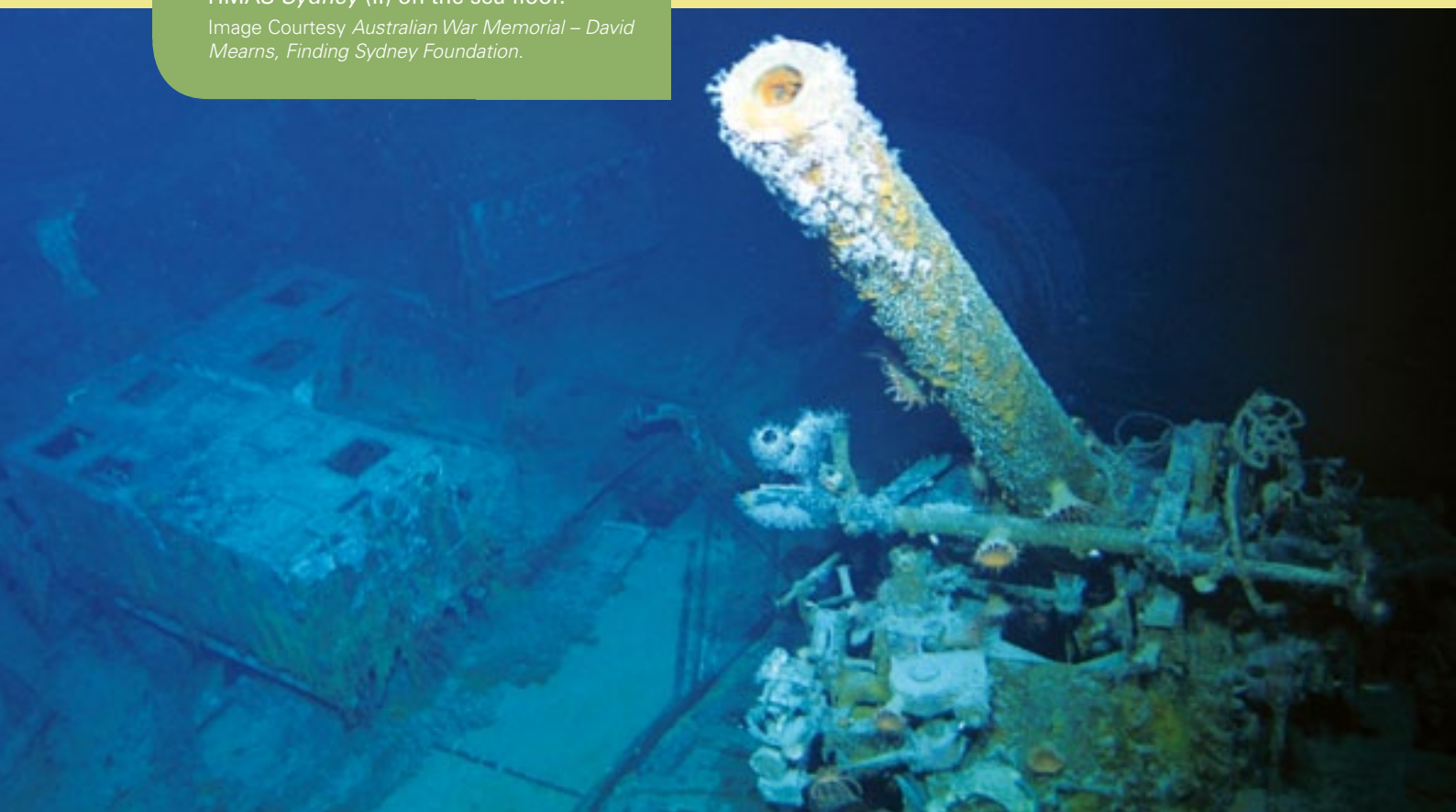
Both wrecks show evidence of decay which will inevitably lead to structural collapse. The first outcome of work funded by the grant will be to develop a heritage management plan for the two sites, located north-west of Geraldton in around 2,500 metres of water. Plans can then be developed to create a virtual visitor experience that would give people permanent access to two of Australia's most inaccessible yet significant heritage locations.

The Museum is working with Curtin University, DOF Subsea, Friends of the WA Museum, the Australian National Maritime Museum, the University of Western Australia, The Royal Australian Navy and the National Naval Association.

[www.museum.wa.gov.au/explore/sydney/photo-galleries/vessel-photos](http://www.museum.wa.gov.au/explore/sydney/photo-galleries/vessel-photos)

HMAS *Sydney* (II) on the sea floor.

Image Courtesy *Australian War Memorial – David Mearns, Finding Sydney Foundation.*



- Commonwealth grant of \$168,000 for works on Beacon Island, part of the Wallabi Group of Abrohlos Islands and the site of the infamous *Batavia* shipwreck and mutiny, which is managed by the WA Museum.

[www.museum.wa.gov.au/research/research-areas/maritime-archaeology/batavia-cape-inscription/batavia](http://www.museum.wa.gov.au/research/research-areas/maritime-archaeology/batavia-cape-inscription/batavia)

- \$150,000 in-kind funding for Synchrotron imaging of the de Vlamingh plate (see case study page 52).

F2

**Be entrepreneurial in all that we do.**

### **Outcomes:**

- Total earned revenue, excluding income from State and Commonwealth governments was \$8.138 million.
- The Statement of Comprehensive Income for the period ended 30 June 2013 reports a surplus of \$2.439 million.

### **Achievements:**

- A retail outlet developed to support the *Secrets of the Afterlife* exhibition has proved very successful, generating revenue of \$0.153 million with a spend per head of \$5.34 (17 May to 30 June) more than 50 per cent higher than the projected spend of \$3 per head.
- An online in-house custom-designed computer ticketing system for the Western Australian Museum is generating savings of, potentially, tens of thousands of dollars in administration costs, which is currently translating into customer savings of just over \$1 per ticket.

[www.museum.wa.gov.au/explore/blogs/museumweb/wam-tickets-technical-background](http://www.museum.wa.gov.au/explore/blogs/museumweb/wam-tickets-technical-background)

- Tapping a commercial opportunity that reflects the Museum's brand and business, by contracting Erth Dinosaurs to provide life-sized dinosaur puppet performances at the Perth and Maritime Museum sites. The shows were extremely popular attracting more than 28,000 visitors.

[www.museum.wa.gov.au/explore/videos/dinosaur-petting-zoo-museum](http://www.museum.wa.gov.au/explore/videos/dinosaur-petting-zoo-museum)



Merchandise at the *Secrets of the Afterlife* retail outlet, Perth 2013.

Image courtesy *Sabine Albers Photography*.





F3

**Maximise effectiveness of the Western Australian Museum Foundation.****Outcomes:**

- Contributions to the Western Australian Museum Foundation totalled \$1.3 million, comprising corporate sponsorships worth \$772,000, donations worth \$358,000, and in-kind sponsorships worth \$170,000.
- The Western Australian Museum Foundation Board of Governors welcomed three new members, Dr Marina Hogan, Mr Tim Lester and Mr Nick Brasington.

**Achievements:**

- A business plan for the Western Australian Museum Foundation has been finalised and adopted by the Governors.
- The Foundation Ambassadors Program was established with the aim of engaging high profile volunteer supporters to raise awareness about the Museum, the Foundation and the New Museum redevelopment project.

F4

**Provide value for money by adding value and sharing costs.****Outcomes:**

- \$170,000 of in-kind savings were contributed by sponsors including Singapore Airlines, Singapore Airline Cargo, Quest on James and a variety of accommodation and launch partners.

**Achievements:**

- The Museum added value to Government by using its curatorial and project management expertise to coordinate exhibition material for the new premises of the Department of Premier and Cabinet at Hale House in West Perth. The Museum contributed items of furniture and historic artefacts to the display, exposing significant objects from the State's Collection to visitors to Hale House, including dignitaries.

- The Museum has been asked by Government to coordinate the content development for the new ANZAC Interpretive Centre, to be built in Albany and opened in time to commemorate the sailing of the first convoys of WWI troops. Work has begun on the development which will be a major part of the nation's marking of the Centenary of Service in 2014.
- Liaison with Fremantle Ports, Challenger TAFE, E-Shed Markets and the STS Leeuwin Foundation to achieve integrated marketing and development of Victoria Quay as a tourism destination.

## PROCESSES

P

### Link to Government Goals

**Goal 1** – State building – major projects

**Goal 2** – Financial and economic responsibility

**Goal 5** – Social and environmental responsibility

[www.publicsector.wa.gov.au/node/67](http://www.publicsector.wa.gov.au/node/67)

The Western Australian Museum is committed to meeting its legislative and agency obligations and ensure effective management of the organisation. It does so by achieving its five Strategic Process Aims:

**P1**

**Discharge heritage responsibilities including legislative obligations.**

### Outcomes:

- The Museum responded to 449 requests for information in relation to maritime archaeological wrecks and/or relics. This included registering and maintaining artefacts, investigating and identifying shipwrecks and providing advice about State and Commonwealth maritime archaeological sites under the Museum's care.

**Achievements:**

- The opening of a new exhibition at Fremantle’s Maritime Museum Shipwreck Galleries commemorated the 50<sup>th</sup> anniversaries of the finding of the wrecked Dutch East Indiaman ship the *Batavia* on the Abrolhos Islands and the *Vergulde Draeck* off Ledge Point.
- Celebrating the 50<sup>th</sup> anniversaries of the discoveries of the wrecks of the Dutch ships *Vergulde Draeck* and *Batavia* at the Western Australian Museum – Geraldton through a range of programs and activities.



**Care for Western Australia’s collections representing the natural environment, the state’s history, stories and traditions.**

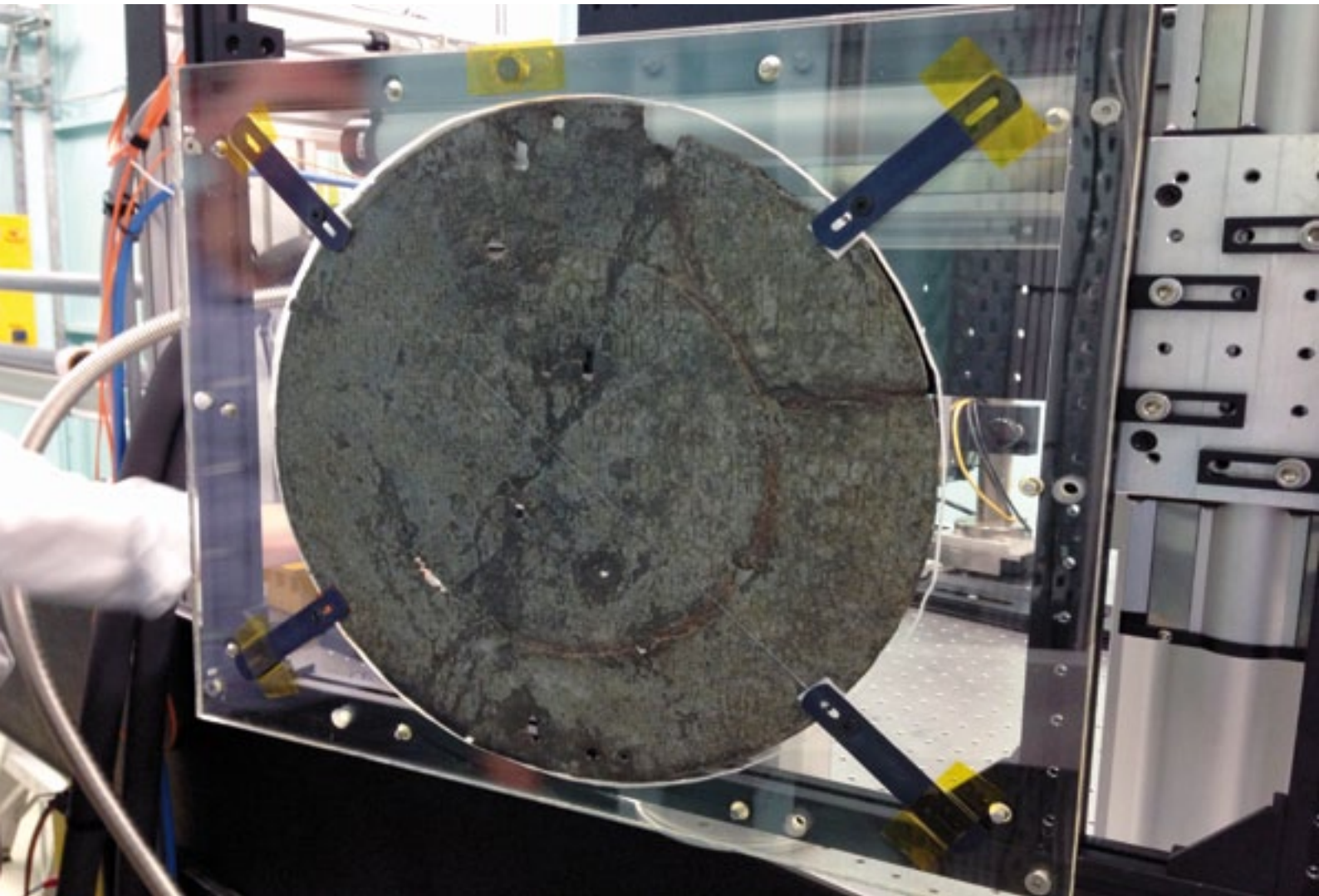
**Outcomes:**

- In 2012–13, the Museum:
  - acquired 5,784 items by donations to the value of 1,503,434;
  - purchased 29 items to the value of \$22,103; and
  - collected 15,740 items during field work.
- Work underway on a new and fully integrated Collection Management Information System (CMIS) will lead to greater accessibility and more effective management of the more than 4.5 million objects in the State’s Collection, and in turn, better content development for the New Museum.

**Achievements:**

Significant items added to the collection this year include:

- 153 artefacts from the Rolly Tasker Australian Sailing Museum collection, currently on loan and on display at the Western Australian Maritime Museum, are in process of being formally gifted to the Museum.
- A significant collection of material from one of the discoverers of the *Batavia* wreck, the late Max Cramer, has been donated to the WA Museum.
- From the *Unveiled: 200 years of Wedding Glamour* exhibition, a dress from world renowned, WA-based fashion designer Aurelio Costarella has become a permanent part of the Museum’s collection.



## PRESERVING WA HISTORY ON A PLATE

The future care, conservation and management of one of Australia's earliest historic examples of European contact has been assured after the de Vlamingh Plate was taken from the Western Australian Museum to Melbourne for state-of-the-art x-ray fluorescence microscopy (XFM).

The intensive scans were able to determine the plate's composition and the extent of its corrosion – without causing any damage - so it can be properly treated, conserved and displayed for generations to come. The de Vlamingh Plate was found on Dirk Hartog Island off the Western Australian coast where it was left by Dutch explorer Willem de Vlamingh in 1697. The cost of the five days' work using the XFM at the Australian Synchrotron in Melbourne, some \$150,000, was provided as in-kind funding.

**P3****Ensure effective governance and management.****Outcomes:**

- The project management framework successfully used for the *Unveiled* and *Secrets of the Afterlife* exhibitions has delivered a new era of effective management practices for the Museum.

**Achievements:**

- An induction manual for new members of the Board of Trustees has been finalised and is now in use.
- A new Governance Framework has been finalised and implemented.

**P4****Contribute to the conservation of environment, landscapes, heritage sites and traditions.****Outcomes:**

- The Museum continues to be regarded as an authority on issues of marine and terrestrial biodiversity and issues of cultural significance, responding to more than 1,385 requests for advice from government and the private sector.

**Achievements:**

- The Museum manages eight Crown land reserves throughout Western Australia, in consultation with traditional owners.



**P5****Ensure the highest standards of health and safety management and practice.****Outcomes:**

- With approximately 252 employees (at 30 June 2013) and 879,145 visitors across all of its sites, the Museum recorded a total of 31 injuries and health or safety related incidences for the year. Of the 31 incidents, five involved staff or volunteers (three of which resulted in workers compensation claims), one contractor and 25 were either visitors or other people attending the Museum's sites. These figures will be used to set targets for improved performance in coming years.

**Achievements:**

- An Occupational Health and Safety (OHS) audit for all metropolitan sites was completed and work begun on development of an OHS plan in consultation with internal stakeholders.
- The Museum has increased the number of OHS representatives within its workforce from 13 to 14.

# SIGNIFICANT ISSUES IMPACTING THE AGENCY

## ISSUES, TRENDS AND INITIATIVES

The following current issues have been identified as those that will be at the forefront of the Museum's consideration in the coming year.

The Museum's Strategic Plan 2011–14 identifies five key priorities. Significant issues and major initiatives are grouped within these five areas:



### **Delivering community value.**

#### NEW MUSEUM PROJECT

- Community engagement will be a key feature of the development and planning work for the New Museum project in 2013–14.
- The Project Definition Phase will continue throughout 2013–14 and involves refining the project scope, confirming the budget and detailing the delivery schedule. Central to this is the creation of briefing materials, including a Functional Brief, to be used by the team working on the next phase – the Design phase.
- The Museum will complete most of the recruitment required to bring on board the teams that will assist in the content development for the New Museum.
- The design work for the Welshpool Collections and Research Centre will be finalised during 2013–14.



### **Sustainable management.**

- The Museum will continue to exercise financial rigor in all its operations while delivering the best service possible. Successive and significant reductions in Government funding will inevitably impact on services and ultimately on KPI results.

- The Museum will work with Government to manage the proposed Machinery of Government changes that will provide greater autonomy, particularly in the areas of budgets and staff.
- The Museum's Strategic Plan will be reviewed and rolled forward.

**3****Working WA-wide.**

- The Museum has been given the task of content development for the new ANZAC Interpretation Centre at Albany, to be opened on November 1, 2014 in time for the 100<sup>th</sup> anniversary of the departure of the first ANZAC convoys.
- The Museum is working with the Returned and Services League to assist regional communities across WA and the Cocos and Keeling Islands to develop exhibitions to mark the Centenary of Service, beginning next year.
- The Museum operates three museums in Kalgoorlie-Boulder, Geraldton and Albany which increasingly act as 'hubs', providing advice and support for their regions. Negotiations are underway to develop partnerships with non-WA Museums to act as conduits for WAM's expertise and services in those regions where there is no WA Museum site.
- Masterplanning for sites at Geraldton and Albany will be a priority in 2013-14.

**4****Recognising Aboriginal and Torres Strait Islander People as Australia's first peoples.**

- Planning and consultation for the Museum's Reconciliation Action Plan is underway, with a view to finalising and launching within the next 12 months. This will be the first Reconciliation Action Plan for the Museum and its creation has unanimous support from the WA Museum's Aboriginal Advisory Committee.
- The Museum will continue to increase training and employment opportunities for Indigenous people.

## 5

**Empowering staff and volunteers.**

- Following Budget constraints that prevented the planned organisational restructure, there will be a need to prepare the Museum for the organisational renewal that will necessarily come from refocusing our work to prioritise the development of a New Museum for Western Australia. Funding constraints and rapid progress on the New Museum project mean that the previous proposed restructure will need to be revisited to take account of current parameters.
- The Museum will roll out the new documentation prepared to support its volunteer operations.
- Regular communication with staff and volunteers will be sustained and enhanced where possible.
- All staff and volunteers will be encouraged to become brand ambassadors for the Museum in this new phase of operation.

# DISCLOSURES AND LEGAL COMPLIANCE

## FINANCIAL STATEMENTS AND KEY PERFORMANCE INDICATORS

### AUDIT OPINION



#### Auditor General

##### INDEPENDENT AUDITOR'S REPORT

To the Parliament of Western Australia

THE WESTERN AUSTRALIAN MUSEUM

##### Report on the Financial Statements

I have audited the accounts and financial statements of The Western Australian Museum.

The financial statements comprise the Statement of Financial Position as at 30 June 2013, the Statement of Comprehensive Income, Statement of Changes in Equity and Statement of Cash Flows for the year then ended, and Notes comprising a summary of significant accounting policies and other explanatory information.

##### *Trustees' Responsibility for the Financial Statements*

The Trustees are responsible for keeping proper accounts, and the preparation and fair presentation of the financial statements in accordance with Australian Accounting Standards and the Treasurer's Instructions, and for such internal control as the Trustees determine is necessary to enable the preparation of financial statements that are free from material misstatement, whether due to fraud or error.

##### *Auditor's Responsibility*

As required by the Auditor General Act 2006, my responsibility is to express an opinion on the financial statements based on my audit. The audit was conducted in accordance with Australian Auditing Standards. Those Standards require compliance with relevant ethical requirements relating to audit engagements and that the audit be planned and performed to obtain reasonable assurance about whether the financial statements are free from material misstatement.

An audit involves performing procedures to obtain audit evidence about the amounts and disclosures in the financial statements. The procedures selected depend on the auditor's judgement, including the assessment of the risks of material misstatement of the financial statements, whether due to fraud or error. In making those risk assessments, the auditor considers internal control relevant to the Museum's preparation and fair presentation of the financial statements in order to design audit procedures that are appropriate in the circumstances. An audit also includes evaluating the appropriateness of the accounting policies used and the reasonableness of accounting estimates made by the Trustees, as well as evaluating the overall presentation of the financial statements.

I believe that the audit evidence obtained is sufficient and appropriate to provide a basis for my audit opinion.

##### **Opinion**

In my opinion, the financial statements are based on proper accounts and present fairly, in all material respects, the financial position of The Western Australian Museum at 30 June 2013 and its financial performance and cash flows for the year then ended. They are in accordance with Australian Accounting Standards and the Treasurer's Instructions.



**Report on Controls**

I have audited the controls exercised by The Western Australian Museum during the year ended 30 June 2013.

Controls exercised by The Western Australian Museum are those policies and procedures established by the Trustees to ensure that the receipt, expenditure and investment of money, the acquisition and disposal of property, and the incurring of liabilities have been in accordance with legislative provisions.

*Trustees' Responsibility for Controls*

The Trustees are responsible for maintaining an adequate system of internal control to ensure that the receipt, expenditure and investment of money, the acquisition and disposal of public and other property, and the incurring of liabilities are in accordance with the Financial Management Act 2006 and the Treasurer's Instructions, and other relevant written law.

*Auditor's Responsibility*

As required by the Auditor General Act 2006, my responsibility is to express an opinion on the controls exercised by The Western Australian Museum based on my audit conducted in accordance with Australian Auditing and Assurance Standards.

An audit involves performing procedures to obtain audit evidence about the adequacy of controls to ensure that the Museum complies with the legislative provisions. The procedures selected depend on the auditor's judgement and include an evaluation of the design and implementation of relevant controls.

I believe that the audit evidence obtained is sufficient and appropriate to provide a basis for my audit opinion.

**Opinion**

In my opinion, the controls exercised by The Western Australian Museum are sufficiently adequate to provide reasonable assurance that the receipt, expenditure and investment of money, the acquisition and disposal of property, and the incurring of liabilities have been in accordance with legislative provisions during the year ended 30 June 2013.

**Report on the Key Performance Indicators**

I have audited the key performance indicators of The Western Australian Museum for the year ended 30 June 2013.

The key performance indicators are the key effectiveness indicators and the key efficiency indicators that provide information on outcome achievement and service provision.

*Trustees' Responsibility for the Key Performance Indicators*

The Trustees are responsible for the preparation and fair presentation of the key performance indicators in accordance with the Financial Management Act 2006 and the Treasurer's Instructions and for such controls as the Trustees determine necessary to ensure that the key performance indicators fairly represent indicated performance.

*Auditor's Responsibility*

As required by the Auditor General Act 2006, my responsibility is to express an opinion on the key performance indicators based on my audit conducted in accordance with Australian Auditing and Assurance Standards.

An audit involves performing procedures to obtain audit evidence about the key performance indicators. The procedures selected depend on the auditor's judgement, including the assessment of the risks of material misstatement of the key performance indicators. In making these risk assessments the auditor considers internal control relevant to the Trustees' preparation and fair presentation of the key performance indicators in order to design audit procedures that are appropriate in the circumstances. An audit also includes evaluating the relevance and appropriateness of the key performance indicators for measuring the extent of outcome achievement and service provision.

I believe that the audit evidence obtained is sufficient and appropriate to provide a basis for my audit opinion.

**Opinion**

In my opinion, the key performance indicators of The Western Australian Museum are relevant and appropriate to assist users to assess the Museum's performance and fairly represent indicated performance for the year ended 30 June 2013.

**Independence**

In conducting this audit, I have complied with the independence requirements of the Auditor General Act 2006 and Australian Auditing and Assurance Standards, and other relevant ethical requirements.

**Matters Relating to the Electronic Publication of the Audited Financial Statements and Key Performance Indicators**

This auditor's report relates to the financial statements and key performance indicators of The Western Australian Museum for the year ended 30 June 2013 included on the Museum's website. The Museum's management is responsible for the integrity of the Museum's website. This audit does not provide assurance on the integrity of the Museum's website. The auditor's report refers only to the financial statements and key performance indicators described above. It does not provide an opinion on any other information which may have been hyperlinked to/from these financial statements or key performance indicators. If users of the financial statements and key performance indicators are concerned with the inherent risks arising from publication on a website, they are advised to refer to the hard copy of the audited financial statements and key performance indicators to confirm the information contained in this website version of the financial statements and key performance indicators.



DON CUNNINGHAME  
ASSISTANT AUDITOR GENERAL ASSURANCE SERVICES  
Delegate of the Auditor General for Western Australia  
Perth, Western Australia  
12 September 2013

# CERTIFICATION OF FINANCIAL STATEMENTS

FOR THE YEAR ENDED 30 JUNE 2013

The accompanying financial statements of the Western Australian Museum have been prepared in compliance with the provisions of the *Financial Management Act 2006* from proper accounts and records to present fairly the financial transactions for the financial year ended 30 June 2013 and the financial position as at 30 June 2013.

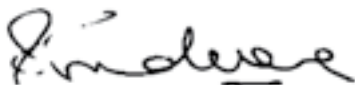
At the date of signing we are not aware of any circumstances which would render the particulars included in the financial statements misleading or inaccurate.



Tony Loiacono  
Chief Finance Officer  
11 September 2013



Alan Robson  
Chair, Western Australian Museum Board of Trustees  
11 September 2013



Steve Scudamore  
Member, Western Australian Museum Board of Trustees  
11 September 2013

# FINANCIAL STATEMENTS

## STATEMENT OF COMPREHENSIVE INCOME FOR THE YEAR ENDED 30 JUNE 2013

	Note	2013 \$000	2012 \$000
<b>COST OF SERVICES</b>			
<b>Expenses</b>			
Employee benefits expense	6	17,817	16,925
Supplies and services	7	6,341	8,492
Depreciation and amortisation expense	8	2,432	2,742
Accommodation expenses	9	3,011	3,388
Grants and subsidies		49	-
Cost of sales	12	666	647
Other expenses	10	449	317
<b>Total cost of services</b>		<b>30,765</b>	<b>32,511</b>
<b>INCOME</b>			
<b>Revenue</b>			
User charges and fees	11	1,651	1,688
Sales	12	2,361	1,129
Commonwealth grants and contributions	13	210	548
Interest revenue	14	85	155
Other revenue	15	4,041	5,035
<b>Total revenue</b>		<b>8,348</b>	<b>8,555</b>
<b>Total income other than income from State Government</b>		<b>8,348</b>	<b>8,555</b>
<b>NET COST OF SERVICES</b>		<b>22,417</b>	<b>23,956</b>
<b>INCOME FROM STATE GOVERNMENT</b>			
	16		
Service appropriation		7,564	7,075
Resources received free of charge		15,987	18,250
State grants and contributions		1,305	34
<b>Total income from State Government</b>		<b>24,856</b>	<b>25,359</b>
<b>SURPLUS/(DEFICIT) FOR THE PERIOD</b>		<b>2,439</b>	<b>1,403</b>
<b>OTHER COMPREHENSIVE INCOME</b>			
<b>Items not reclassified subsequently to profit or loss</b>			
Changes in asset revaluation surplus	28	(1,576)	(7,512)
<b>Total other comprehensive income</b>		<b>(1,576)</b>	<b>(7,512)</b>
<b>TOTAL COMPREHENSIVE INCOME FOR THE PERIOD</b>		<b>863</b>	<b>(6,109)</b>

The Statement of Comprehensive Income should be read in conjunction with the accompanying notes.

STATEMENT OF FINANCIAL POSITION  
AS AT 30 JUNE 2013

	Note	2013 \$000	2012 \$000
<b>ASSETS</b>			
<b>Current assets</b>			
Cash and cash equivalents	29	775	427
Restricted cash and cash equivalents	17, 29	2,415	1,991
Inventories	18	905	850
Receivables	19	411	482
Other current assets	21	-	3
<b>Total current assets</b>		<b>4,506</b>	<b>3,753</b>
<b>Non-current assets</b>			
Amounts receivable for services	20	27,839	25,095
Property, plant and equipment	22	98,612	102,079
Museum collections	23	637,628	636,100
<b>Total non-current assets</b>		<b>764,079</b>	<b>763,274</b>
<b>TOTAL ASSETS</b>		<b>768,585</b>	<b>767,027</b>
<b>LIABILITIES</b>			
<b>Current liabilities</b>			
Payables	25	4,358	3,644
Borrowings	26	-	19
Other current liabilities	27	7	7
<b>Total Current liabilities</b>		<b>4,365</b>	<b>3,670</b>
<b>TOTAL LIABILITIES</b>		<b>4,365</b>	<b>3,670</b>
<b>NET ASSETS</b>		<b>764,220</b>	<b>763,357</b>
<b>EQUITY</b>			
Contributed equity	28	15,216	15,216
Reserves		497,919	499,495
Accumulated surplus		251,085	248,646
<b>TOTAL EQUITY</b>		<b>764,220</b>	<b>763,357</b>

The Statement of Financial Position should be read in conjunction with the accompanying notes.



STATEMENT OF CHANGES IN EQUITY  
FOR THE YEAR ENDED 30 JUNE 2013

	Note	Contributed Equity \$000	Reserves \$000	Accumulated Surplus \$000	Total equity \$000
<b>Balance at 1 July 2011</b>	28	<b>15,216</b>	<b>507,007</b>	<b>247,243</b>	<b>769,466</b>
Surplus/(deficit)		-	-	1,403	1,403
Revaluation decrement		-	(7,512)	-	(7,512)
Total comprehensive income for the year		-	(7,512)	1,403	(6,109)
Transactions with owners in their capacity as owners:					
Capital appropriations		-	-	-	-
Distributions to owners		-	-	-	-
Total		-	(7,512)	1,403	(6,109)
<b>Balance as at 30 June 2012</b>		<b>15,216</b>	<b>499,495</b>	<b>248,646</b>	<b>763,357</b>
<b>Balance at 1 July 2012</b>	28	<b>15,216</b>	<b>499,495</b>	<b>248,646</b>	<b>763,357</b>
Surplus/(deficit)		-	-	2,439	2,439
Revaluation decrement		-	(1,576)	-	(1,576)
Total comprehensive income for the year		-	(1,576)	2,439	863
Transactions with owners in their capacity as owners:					
Capital appropriations		-	-	-	-
Distributions to owners		-	-	-	-
Total		-	(1,576)	2,439	863
<b>Balance as at 30 June 2012</b>		<b>15,216</b>	<b>497,919</b>	<b>251,085</b>	<b>764,220</b>

The Statement of Changes in Equity should be read in conjunction with the accompanying notes.

STATEMENT OF CASH FLOWS  
FOR THE YEAR ENDED 30 JUNE 2013

	Note	2013 \$000	2012 \$000
<b>CASH FLOWS FROM STATE GOVERNMENT</b>			
Service appropriation		4,820	3,326
Capital appropriation		-	-
Holding account drawdowns		-	-
State grants and contributions		1,305	34
<b>Net cash provided by State Government</b>		<b>6,125</b>	<b>3,360</b>
<i>Utilised as follows:</i>			
<b>CASH FLOWS FROM OPERATING ACTIVITIES</b>			
	29		
<b>Payments</b>			
Employee benefits		(979)	(363)
Supplies and services		(8,267)	(7,811)
Accommodation		(3,011)	(3,388)
Grants and subsidies		(49)	-
GST payments on purchases		(1,050)	(937)
GST payments on taxation authority		(70)	-
Other payments		(987)	(320)
<b>Receipts</b>			
Sale of goods and services		2,361	1,129
User charges and fees		1,651	1,649
Commonwealth grants and contributions		210	548
Interest received		83	194
GST receipts on sales		1,176	771
GST receipts from taxation authority		-	199
Other receipts		3,659	4,251
<b>Net cash used in operating activities</b>		<b>(5,273)</b>	<b>(4,078)</b>
<b>CASH FLOWS FROM INVESTING ACTIVITIES</b>			
Purchase of non-current physical assets		(61)	(142)
<b>Net cash used in investing activities</b>		<b>(61)</b>	<b>(142)</b>
<b>CASH FLOWS FROM FINANCING ACTIVITIES</b>			
Repayment of borrowings		(19)	(19)
<b>Net cash used in financing activities</b>		<b>(19)</b>	<b>(19)</b>
<b>Net increase/(decrease) in cash and cash equivalents</b>		<b>772</b>	<b>(595)</b>
Cash and cash equivalents at the beginning of period		2,418	3,013
<b>CASH AND CASH EQUIVALENTS AT THE END OF PERIOD</b>	29	<b>3,190</b>	<b>2,418</b>

The Statement of Cash Flows should be read in conjunction with the accompanying notes.

## NOTES TO THE FINANCIAL STATEMENTS FOR THE YEAR ENDED 30 JUNE 2013

### 1. AUSTRALIAN ACCOUNTING STANDARDS

#### General

The Western Australian Museum's financial statements for the year ended 30 June 2013 have been prepared in accordance with Australian Accounting Standards. The term 'Australian Accounting Standards' includes Standards and Interpretations issued by the Australian Accounting Standards Board (AASB).

The Western Australian Museum has adopted any applicable new and revised Australian Accounting Standards from their operative dates.

#### Early adoption of standards

The Western Australian Museum cannot early adopt an Australian Accounting Standard unless specifically permitted by TI 1101 *Application of Australian Accounting Standards and Other Pronouncements*. No Australian Accounting Standards that have been issued or amended (but not operative) have been early adopted by the Western Australian Museum for the annual reporting period ended 30 June 2013.

### 2. SUMMARY OF SIGNIFICANT ACCOUNTING POLICIES

#### a) General statement

The Western Australian Museum is a not-for-profit reporting entity that prepares general purpose financial statements in accordance with Australian Accounting Standards, the Framework, Statements of Accounting Concepts and other authoritative pronouncements of the AASB as applied by the Treasurer's Instructions. Several of these are modified by the Treasurer's Instructions to vary application, disclosure, format and wording.

The *Financial Management Act* and the Treasurer's Instructions are legislative provisions that govern the preparation of financial statements and take precedence over Australian Accounting Standards, the Framework, Statements of Accounting Concepts and other authoritative pronouncements of the AASB.

Where modification is required and has had a material or significant financial effect upon the reported results, details of that modification and the resulting financial effect are disclosed in the notes to the financial statements.

#### b) Basis of preparation

The financial statements have been prepared on the accrual basis of accounting using the historical cost convention, except for land, buildings and Museum collections which have been measured at fair value.

The accounting policies adopted in the preparation of the financial statements have been consistently applied throughout all periods presented unless otherwise stated.

The financial statements are presented in Australian dollars and all values are rounded to the nearest thousand dollars (\$'000).

Note 4 'Judgements made by management in applying accounting policies' discloses judgements that have been made in the process of applying the Western Australian Museum's accounting policies resulting in the most significant effect on amounts recognised in the financial statements.

#### c) Reporting entity

The reporting entity is The Western Australian Museum which is a body corporate with perpetual succession and an agency of the State of Western Australia.

#### d) Contributed equity

AASB Interpretation 1038 *Contributions by Owners Made to Wholly-Owned Public Sector Entities* requires transfers in the nature of equity contributions, other than as a result of a restructure of administrative arrangements, to be designated by the Government (the owner) as contributions by owners (at the time of, or prior to transfer) before such transfers can be recognised as equity contributions. Capital appropriations have been designated as contributions by owners by TI 955 *Contributions by Owners made to Wholly-Owned Public Sector Entities* and have been credited directly to Contributed Equity.

The transfer of net assets to/from other agencies, other than as a result of a restructure of administrative arrangements, are designated as contributions by owners where the transfers are non-discretionary and non-reciprocal.

## **e) Income**

### **Revenue recognition**

Revenue is recognised and measured at the fair value of consideration received or receivable. Revenue is recognised for the major business activities as follows:

#### ***Sale of goods***

Revenue is recognised from the sale of goods and disposal of other assets when the significant risks and rewards of ownership transfer to the purchaser and can be measured reliably.

#### ***Provision of services***

Revenue is recognised to the stage of completion of the transaction.

#### ***Interest***

Revenue is recognised as the interest accrues.

#### ***Service appropriations***

Service appropriations are recognised as revenues at fair value in the period in which the Western Australian Museum gains control of the appropriated funds. The Western Australian Museum gains control of appropriated funds at the time those funds are deposited to the bank account or credited to the 'Amounts receivable for services' (holding account) held at Treasury.

#### ***Grants, donations, gifts and other non-reciprocal contributions***

Revenue is recognised at fair value when the Western Australian Museum obtains control over the assets comprising the contributions, usually when cash is received.

Other non-reciprocal contributions that are not contributions by owners are recognised at their fair value. Contributions of services are only recognised when a fair value can be reliably determined and the services would be purchased if not donated.

### **Gains**

Realised and unrealised gains are usually recognised on a net basis. These include gains arising on the disposal of non-current assets and some revaluations of non-current assets.

## **f) Property, plant and equipment**

### **Capitalisation/expensing of assets**

Items of property, plant and equipment costing \$5,000 or more are recognised as assets and the cost of utilising assets is expensed (depreciated) over their useful lives. Items of property, plant and equipment costing less than \$5,000 are immediately expensed direct to the Statement of Comprehensive Income (other than where they form part of a group of similar items which are significant in total).

### **Initial recognition and measurement**

Property, plant and equipment are initially recognised at cost.

For items of property, plant and equipment acquired at no cost or for nominal cost, the cost is the fair value at the date of acquisition.

### **Subsequent measurement**

Subsequent to initial recognition as an asset, the revaluation model is used for the measurement of land and buildings and historical cost for all other property, plant and equipment. Land and buildings are carried at fair value less accumulated depreciation (buildings only) and accumulated impairment losses. All other items of property, plant and equipment are stated at historical cost less accumulated depreciation and accumulated impairment losses.

Where market-based evidence is available, the fair value of land and buildings is determined on the basis of current market buying values determined by reference to recent market transactions. When buildings are revalued by reference to recent market transactions, the accumulated depreciation is eliminated against the gross carrying amount of the asset and the net amount restated to the revalued amount.

In the absence of market-based evidence, fair value of land and buildings is determined on the basis of existing use. This normally applies where buildings are specialised or where land use is restricted. Fair value for existing use assets is determined by reference to the cost of replacing the remaining future economic benefits embodied in the asset, ie. the depreciated replacement cost. Where the fair value of buildings is determined on the depreciated replacement cost basis, the gross carrying amount and the accumulated depreciation are restated proportionately.

Land and buildings are independently valued annually by the Western Australian Land Information Authority (Valuation Services) and recognised annually to ensure that the carrying amount does not differ materially from the end of the reporting period.

The most significant assumptions in estimating fair value are made in assessing whether to apply the existing use basis to assets and in determining estimated useful life. Professional judgement by the valuer is required where the evidence does not provide a clear distinction between market type assets and existing use assets.

### **Derecognition**

Upon disposal or derecognition of an item of property, plant and equipment or Museum collection, any revaluation surplus relating to that asset is retained in the asset revaluation surplus.

### **Asset revaluation surplus**

The asset revaluation surplus is used to record increments and decrements on the revaluation of non-current assets as described in Note 22 'Property, plant and equipment' and Note 23 'Museum collections'.

### **Depreciation**

All non-current assets having a limited useful life are systematically depreciated over their estimated useful lives in a manner that reflects the consumption of their future economic benefits.

Depreciation is calculated using the straight line method, using rates which are reviewed annually. Estimated useful lives for each class of depreciable asset are:

Buildings and monuments	40 years
Plant, equipment and vehicles	5 to 20 years
Office equipment	4 to 10 years
Leasehold improvements	Balance of the current terms of lease

Land is not depreciated.

## **g) Museum collections**

### **Capitalisation/expensing of assets**

No capitalisation threshold is applied to Museum collection items. These items are considered to form part of a collection and are disclosed separately in the Statement of Financial Position.

### **Initial recognition and measurement**

Collection items may be acquired through collection, purchase or donation. Acquisitions of collection items are recorded at cost when purchased and at fair value when donated.

### **Subsequent measurement**

The collections of the Western Australian Museum are revalued every five years (2011: three years). The revaluation of the collections is conducted by independent valuers using a combination of both market values, where applicable, and recollection costs. Additional detail is provided at Note 5 'Voluntary change in accounting policy'.

### **Depreciation**

Collection items controlled by the Western Australian Museum are classified as heritage assets. They are anticipated to have very long and indeterminate useful lives. Their service potential has not, in any material sense, been consumed during the reporting period. As such, no amount for depreciation has been recognised in respect of these assets.



## h) Intangible assets

### Capitalisation/expensing of assets

Acquisitions of intangible assets costing \$5,000 or more and internally generated intangible assets costing \$50,000 or more are capitalised. The cost of utilising the assets is expensed (amortised) over their useful life. Costs incurred below these thresholds are immediately expensed directly to the Statement of Comprehensive Income.

Intangible assets are initially recognised at cost. For assets acquired at no cost or for nominal cost, the cost is their fair value at the date of acquisition.

The cost model is applied for subsequent measurement requiring the asset to be carried at cost less any accumulated amortisation and accumulated impairment losses.

Amortisation for intangible assets with finite useful lives is calculated for the period of the expected benefit (estimated useful life which is reviewed annually) on the straight line basis. All intangible assets controlled by the Western Australian Museum have a finite useful life and zero residual value.

The expected useful lives for each class of intangible asset are:

Software <sup>(a)</sup>	3 to 10 years
-------------------------	---------------

(a) Software that is not integral to the operation of any related hardware.

### Computer software

Software that is an integral part of the related hardware is treated as property, plant and equipment. Software that is not an integral part of the related hardware is recognised as an intangible asset. Software costing less than \$5,000 is expensed in the year of acquisition.

### Website costs

Website costs are charged as expenses when they are incurred unless they relate to the acquisition or development of an asset when they may be capitalised and amortised. Generally, costs in relation to feasibility studies during the planning phase of a website, and ongoing costs of maintenance during the operating phase are expensed. Costs incurred in building or enhancing a website, to the extent that they represent probable future economic benefits that can be reliably measured, are capitalised.

## i) Impairment of Assets

Property, plant and equipment and intangible assets are tested for any indication of impairment at the end of each reporting period. Where there is an indication of impairment, the recoverable amount is estimated. Where the recoverable amount is less than the carrying amount, the asset is considered impaired and is written down to the recoverable amount and an impairment loss is recognised. Where an asset measured at cost is written down to recoverable amount, an impairment loss is recognised in profit or loss. Where a previously revalued asset is written down to recoverable amount, the loss is recognised as a revaluation decrement in other comprehensive income. As the Western Australian Museum is a not-for-profit entity, unless an asset has been identified as a surplus asset, the recoverable amount is the higher of an asset's fair value less costs to sell and depreciated replacement cost.

The risk of impairment is generally limited to circumstances where an asset's depreciation is materially understated, where the replacement cost is falling or where there is a significant change in useful life. Each relevant class of assets is reviewed annually to verify that the accumulated depreciation/amortisation reflects the level of consumption or expiration of the asset's future economic benefits and to evaluate any impairment risk from falling replacement costs.

Intangible assets with an indefinite useful life and intangible assets not yet available for use are tested for impairment at the end of each reporting period irrespective of whether there is any indication of impairment.

The recoverable amount of assets identified as surplus assets is the higher of fair value less costs to sell and the present value of future cash flows expected to be derived from the asset. Surplus assets carried at fair value have no risk of material impairment where fair value is determined by reference to market-based evidence. Where fair value is determined by reference to depreciated replacement cost, surplus assets are at risk of impairment and the recoverable amount is measured. Surplus assets at cost are tested for indications of impairments at the end of each reporting period.

**j) Leases**

The Western Australian Museum holds operating leases for vehicles. Operating leases are expensed on a straight line basis over the lease term as this represents the pattern of benefits derived from the leased vehicles.

**k) Financial instruments**

In addition to cash, the Western Australian Museum has two categories of financial instrument:

- Loans and receivables; and
- Financial liabilities measured at amortised cost.

Financial instruments have been disaggregated into the following classes:

- Financial Assets
  - Cash and cash equivalents
  - Restricted cash and cash equivalents
  - Receivables
  - Amounts receivable for services
- Financial Liabilities
  - Payables
  - Other borrowings

Initial recognition and measurement of financial instruments is at fair value which normally equates to the transaction cost or the face value. Subsequent measurement is at amortised cost using the effective interest method.

The fair value of short-term receivables and payables is the transaction cost or the face value because there is no interest rate applicable and subsequent measurement is not required as the effect of discounting is not material.

**l) Cash and cash equivalents**

For the purpose of the Statement of Cash Flows, cash and cash equivalent (and restricted cash and cash equivalent) assets comprise cash on hand and short-term deposits with original maturities of three months or less that are readily convertible to a known amount of cash and which are subject to insignificant risk of changes in value.

**m) Accrued salaries**

Accrued salaries represent the amount due to staff but unpaid at the end of the financial year. Accrued salaries are settled within a fortnight of the financial year end.

All staff of the Culture and the Arts portfolio agencies, including the Western Australian Museum, are employees of the Department of Culture and the Arts. Therefore, the Western Australian Museum has no liabilities in relation to employee entitlements and accrued salaries. Accrued salaries are offset against resources received free of charge in the Statement of Comprehensive Income. Refer to Note 3 'Department of Culture and the Arts'.

**n) Amounts receivable for services (holding account)**

The Western Australian Museum receives income from the State Government partly in cash and partly as an asset (holding account receivable). The accrued amount appropriated is accessible on the emergence of the cash funding requirement to cover leave entitlements and asset replacement.

**o) Inventories**

Inventories are measured at the lower of cost or net realisable value. Costs are assigned by the method most appropriate for each particular class of inventory, with the majority being valued on an average cost basis.

**p) Receivables**

Receivables are recognised at original invoice amount less an allowance for any uncollectible amounts (ie. impairment). The collectability of receivables is reviewed on an ongoing basis and any receivables identified as uncollectible are written-off against the allowance account. The allowance for uncollectible amounts (doubtful debts) is raised when there is objective evidence that the Western Australian Museum will not be able to collect the debts. The carrying amount is equivalent to fair value as it is due for settlement within 30 days.

**q) Payables**

Payables are recognised when the Western Australian Museum becomes obliged to make future payments as a result of a purchase of assets or services. The carrying amount is equivalent to fair value, as settlement is generally within 30 days.

**r) Borrowings**

All loans payable are initially recognised at cost, being the fair value of the net proceeds received. Subsequent measurement is at amortised cost using the effective interest rate method.

**s) Resources received free of charge or for nominal cost**

Resources received free of charge or for nominal cost that can be reliably measured are recognised as income at fair value. Where the resource received represents a service that the Western Australian Museum would otherwise pay for, a corresponding expense is recognised. Receipt of assets are recognised in the Statement of Financial Position.

Assets or services received from other State Government agencies are separately disclosed under Income from State Government in the Statement of Comprehensive Income.

**t) Comparative figures**

Comparative figures are, where appropriate, reclassified to be comparable with the figures presented in the current financial year.

**3. DEPARTMENT OF CULTURE AND THE ARTS**

The Department of Culture and the Arts provides staff and support to agencies in the Culture and Arts portfolio. The Department receives an appropriation for salary costs, superannuation, fringe benefits tax and capital expenses. These resources, provided to the Western Australian Museum, but paid for by the Department, have been treated as 'Resources received free of charge' in the Statement of Comprehensive Income.

In addition, the Department also provides shared corporate services to the Western Australian Museum that are not recognised in the Statement of Comprehensive Income.

**4. JUDGEMENTS MADE BY MANAGEMENT IN APPLYING ACCOUNTING POLICIES**

The preparation of financial statements requires management to make judgements about the application of accounting policies that have a significant effect on the amounts recognised in the financial statements. The Western Australian Museum evaluates these judgements regularly.

**Operating lease commitments**

The Western Australian Museum has entered into commercial leases rather than finance leases for motor vehicles. The Western Australian Museum has determined that the lessor retains substantially all the risks and rewards incidental to ownership of the vehicles. Accordingly, these leases have been classified as operating leases.

**5. DISCLOSURE OF CHANGES IN ACCOUNTING POLICY AND ESTIMATES****Initial application of an Australian Accounting Standard**

The Western Australian Museum has applied the following Australian Accounting Standards effective for annual reporting periods beginning on or after 1 July 2012 that impacted on the Western Australian Museum:

---

AASB 2011-9

*Amendments to Australian Accounting Standards – Presentation of items of Other Comprehensive Income [AASB 1, 5, 7, 101, 112, 120, 121, 132, 133, 134, 1039 & 1049]*

This Standard requires to group items presented in other comprehensive income on the basis of whether they are potentially reclassifiable to profit or loss subsequently (reclassification adjustments). There is no financial impact.

---

### Voluntary change in accounting policy

The Western Australian Museum changed the frequency of collections revaluations from three years to five years. This was approved by the Western Australian Museum Board of Trustees on 16 May 2012. The change recognises the nature of the Museum collection value is reasonably static, which is consistent with the policy not to depreciate the collection asset (see Note 2. (g) 'Museum collections'). The new frequency of revaluation is also consistent with that adopted by the national and capital city museums within Australia. The nature and context of the Western Australian Museum Collection is similar to that of other Australian museums, of course the items and size of the collections vary across Australia.

The process for adding new items to the collection utilises the valuation methodology of the valuer, which means that the risk of the Western Australian Museum carrying an undervalued or overvalued collection is minimal.

### Future impact of Australian Accounting Standards not yet operative

The Western Australian Museum cannot early adopt an Australian Accounting Standard unless specifically permitted by TI 1101 *Application of Australian Accounting Standards and Other Pronouncements*. Consequently, the Western Australian Museum has not applied early any of the following Australian Accounting Standards that have been issued that may impact the Western Australian Museum. Where applicable, the Western Australian Museum plans to apply these Australian Accounting Standards from their application date:

		Operative for reporting periods beginning on/after
AASB 9	<p><b>Financial Instruments</b></p> <p>This Standard supersedes AASB 139 <i>Financial Instruments: Recognition and Measurement</i>, introducing a number of changes to accounting treatments.</p> <p>The mandatory application date of this Standard was amended to 1 January 2015. The Western Australian Museum has not yet determined the application or the potential impact of the Standard.</p>	1 Jan 2015
AASB 10	<p><b>Consolidated Financial Statements</b></p> <p>This Standard supersedes AASB 127 <i>Consolidated and Separate Financial Statements</i> and Int 112 <i>Consolidation – Special Purpose Entities</i>, introducing a number of changes to accounting treatments.</p> <p>Mandatory application of this Standard was deferred by one year for not-for-profit entities by AASB 2012-10 <i>Amendments to Australian Accounting Standards – Transition Guidance and Other Amendments</i>. The Authority has not yet determined the application or the potential impact of the Standard.</p>	1 Jan 2014
AASB 11	<p><b>Joint Arrangements</b></p> <p>This Standard supersedes AASB 131 <i>Interests in Joint Ventures</i>, introducing a number of changes to accounting treatments.</p> <p>Mandatory application of this Standard was deferred by one year for not-for-profit entities by AASB 2012-10. The Authority has not yet determined the application or the potential impact of the Standard.</p>	1 Jan 2014

		<b>Operative for reporting periods beginning on/after</b>
AASB 12	<p><b><i>Disclosure of Interests in Other Entities</i></b></p> <p>This Standard supersedes disclosure requirements under AASB 127 <i>Consolidated Separate Financial Statements</i> and AASB 131 <i>Interests in Joint Ventures</i>.</p> <p>Mandatory application of this Standard was deferred by one year for not-for-profit entities by AASB 2012-10. The Authority has not yet determined the application or the potential impact of the Standard.</p>	1 Jan 2014
AASB 13	<p><b><i>Fair Value Measurement</i></b></p> <p>This Standard defines fair value, sets out a framework for measuring fair value and requires disclosures about fair value measurements. There is no financial impact.</p>	1 Jan 2013
AASB 127	<p><b><i>Separate Financial Statements</i></b></p> <p>This Standard supersedes AASB 127 <i>Consolidated and Separate Financial Statements</i>, introducing a number of changes to accounting treatments.</p> <p>Mandatory application of this Standard was deferred by one year for not-for-profit entities by AASB 2012-10. The Authority has not yet determined the application or the potential impact of the Standard.</p>	1 Jan 2014
AASB 128	<p><b><i>Investments in Associates and Joint Ventures</i></b></p> <p>This Standard supersedes AASB 128 <i>Investments in Associates</i>, introducing a number of changes to accounting treatments.</p> <p>Mandatory application of this Standard was deferred by one year for not-for-profit entities by AASB 2012-10. The Authority has not yet determined the application or the potential impact of the Standard.</p>	1 Jan 2014
AASB 1053	<p><b><i>Application of Tiers of Australian Accounting Standards</i></b></p> <p>This Standard establishes a differential financial reporting framework consisting of two tiers of reporting requirements for preparing general purpose financial statements. There is no financial impact.</p>	1 Jul 2013
AASB 1055	<p><b><i>Budgetary Reporting</i></b></p> <p>The Standard specifies the nature of budgetary disclosures, the circumstances in which they are to be included in the general purpose financial statements of not-for-profit entities within the GGS. The Western Australian Museum will be required to disclose additional budgetary information and explanations of major variances between actual and budgeted amounts, though there is no financial impact.</p>	1 Jul 2014



		<b>Operative for reporting periods beginning on/after</b>
AASB 2010-2	<p><i>Amendments to Australian Accounting Standards arising from Reduced Disclosure Requirements [AASB 1, 2, 3, 5, 7, 8, 101, 102, 107, 108, 110, 111, 112, 116, 117, 119, 121, 123, 124, 127, 128, 131, 133, 134, 136, 137, 138, 140, 141, 1050 &amp; 1052 and Int 2, 4, 5, 15, 17, 127, 129 &amp; 1052]</i></p> <p>This Standard makes amendments to Australian Accounting Standards and Interpretations to introduce reduced disclosure requirements for certain types of entities. There is no financial impact.</p>	1 Jul 2013
AASB 2010-7	<p><i>Amendments to Australian Accounting Standards arising from AASB 9 (December 2010) [AASB 1, 3, 4, 5, 7, 101, 102, 108, 112, 118, 120, 121, 127, 128, 131, 132, 136, 137, 139, 1023 &amp; 1038 and Int 2, 5, 10, 12, 19 &amp; 127]</i></p> <p>This Standard makes consequential amendments to other Australian Accounting Standards and Interpretations as a result of issuing AASB 9 in December 2010.</p> <p>AASB 2012-6 amended the mandatory application date of this Standard to January 2015. The Authority has not yet determined the application or the potential impact of the Standard.</p>	1 Jan 2015
AASB 2011-2	<p><i>Amendments to Australian Accounting Standards arising from the Trans-Tasman Convergence Project – Reduced Disclosure Requirements [AASB 101 &amp; 1054]</i></p> <p>This Standard removes disclosure requirements from other Standards and incorporates them in a single Standard to achieve convergence between Australian and New Zealand Accounting Standards for reduced disclosure reporting. There is no financial impact.</p>	1 Jul 2013
AASB 2011-6	<p><i>Amendments to Australian Accounting Standards – Extending Relief from Consolidation, the Equity Method and Proportionate Consolidation – Reduced Disclosure Requirements [AASB 127, 128 &amp; 131]</i></p> <p>This Standard extends the relief from consolidation, the equity method and proportionate consolidation by removing the requirement for the consolidated financial statements prepared by the ultimate or any intermediate parent entity to be IFRS compliant, provided that the parent entity, investor or venturer and the ultimate or intermediate parent entity comply with Australian Accounting Standards or Australian Accounting Standards – Reduced Disclosure Requirements. There is no financial impact.</p>	1 Jul 2013
AASB 2011-7	<p><i>Amendments to Australian Accounting Standards arising from the Consolidation and Joint Arrangements Standards [AASB 1, 2, 3, 5, 7, 9, 2009-11, 101, 107, 112, 118, 121, 124, 132, 133, 136, 138, 139, 1023 &amp; 1038 and Int 5, 9, 16 &amp; 17]</i></p> <p>This Standard gives effect to consequential changes arising from the issuance of AASB 10, AASB 11, AASB 127 <i>Separate Financial Statements</i> and AASB 128 <i>Investments in Associates and Joint Ventures</i>. The Western Australian Museum has not yet determined the application or the potential impact of the Standard.</p>	1 Jan 2013

		<b>Operative for reporting periods beginning on/after</b>
AASB 2011-8	<p><i>Amendments to Australian Accounting Standards arising from AASB 13 [AASB 1, 2, 3, 4, 5, 7, 9, 2009-11, 2010-7, 101, 102, 108, 110, 116, 117, 118, 119, 120, 121, 128, 131, 132, 133, 134, 136, 138, 139, 140, 141, 1004, 1023 &amp; 1038 and Int 2, 4, 12, 13, 14, 17, 19, 131 &amp; 132]</i></p> <p>This Standard replaces the existing definition and fair value guidance in other Australian Accounting Standards and Interpretations as the result of issuing AASB 13 in September 2011. There is no financial impact.</p>	1 Jan 2013
AASB 2011-10	<p><i>Amendments to Australian Accounting Standards arising from AASB 119 (September 2011) [AASB 1, 8, 101, 124, 134, 1049 &amp; 2011-8 and Int 14]</i></p> <p>This Standard makes amendments to other Australian Accounting Standards and Interpretations as a result of issuing AASB 119 in September 2011. There is no financial impact.</p>	1 Jan 2013
AASB 2011-11	<p><i>Amendments to AASB 119 (September 2011) arising from Reduced Disclosure Requirements</i></p> <p>This Standard gives effect to Australian Accounting Standards – Reduced Disclosure Requirements for AASB 119 (September 2011). There is no financial impact.</p>	1 Jul 2013
AASB 2012-1	<p><i>Amendments to Australian Accounting Standards – Fair Value Measurement – Reduced Disclosure Requirements [AASB 3, 7, 13, 140 &amp; 141]</i></p> <p>This Standard establishes and amends reduced disclosure requirements for additional and amended disclosures arising from AASB 13 and the consequential amendments implemented through AASB 2011-8. There is no financial impact.</p>	1 Jul 2013
AASB 2012-2	<p><i>Amendments to Australian Accounting Standards – Disclosures – Offsetting Financial Assets and Financial Liabilities [AASB 7 &amp; 132]</i></p> <p>This Standard amends the required disclosures in AASB 7 to include information that will enable users of an entity's financial statements to evaluate the effect or potential effect of netting arrangements, including rights of set-off associated with the entity's recognised financial assets and recognised financial liabilities, on the Western Australian Museum's financial position. There is no financial impact.</p>	1 Jan 2013
AASB 2012-3	<p><i>Amendments to Australian Accounting Standards – Offsetting Financial Assets and Financial Liabilities [AASB 132]</i></p> <p>This Standard adds application guidance to AASB 132 to address inconsistencies identified in applying some of the offsetting criteria, including clarifying the meaning of "currently has a legally enforceable right of set-off" and that some gross settlement systems may be considered equivalent to net settlement. There is no financial impact.</p>	1 Jan 2014

		<b>Operative for reporting periods beginning on/after</b>
AASB 2012-5	<p><i>Amendments to Australian Accounting Standards arising from Annual Improvements 2009/11 Cycle [AASB 1, 101, 116, 132 &amp; 134 and Int 2]</i></p> <p>This Standard makes amendments to the Australian Accounting Standards and Interpretations as a consequence of the annual improvements process. There is no financial impact.</p>	1 Jan 2013
AASB 2012-6	<p><i>Amendments to Australian Accounting Standards – Mandatory Effective Date of AASB 9 and Transition Disclosures [AASB 9, 2009-11, 2010-7, 2011-7 &amp; 2011-8]</i></p> <p>This Standard amends the mandatory effective date of AASB 9 Financial Instruments to 1 January 2015 (instead of 1 January 2013). Further amendments are also made to numerous consequential amendments arising from AASB 9 that will now apply from 1 January 2015. There is no financial impact.</p>	1 Jan 2013
AASB 2012-7	<p><i>Amendments to Australian Accounting Standards arising from Reduced Disclosure Requirements [AASB 7, 12, 101 &amp; 127]</i></p> <p>This Standard adds or amends the Australian Accounting Standards to provide further information regarding the different reporting framework and the two tiers of reporting requirements for preparing general financial statement. There is no financial impact.</p>	1 Jul 2013
AASB 2012-10	<p><i>Amendments to Australian Accounting Standards -Transition Guidance and Other Amendments [AASB 1, 5, 7, 8, 10, 11, 12, 13, 101, 102, 108, 112, 118, 119, 127, 128, 132, 133, 134, 137, 1023, 1038, 1039, 1049, &amp; 2011-7 and Int 12]</i></p> <p>This Standard makes amendments to AASB 10 and related Standards to revise the transition guidance relevant to the initial application of those Standards, and to clarify the circumstances in which adjustments to an entity's previous accounting for its involvement with other entities are required and the timing of such adjustments.</p> <p>The Standard was issued in December 2012. The Western Australian Museum has not yet determined the application or the potential impact of the Standard.</p>	1 Jan 2013
AASB 2012-11	<p><i>Amendments to Australian Accounting Standards -Reduced Disclosure Requirements and Other Amendments [AASB 1, 2, 8, 107, 128, 133, 134, 2011-4]</i></p> <p>This Standard makes various editorial corrections to Australian Accounting Standards Reduced Disclosure Requirements (Tier 2). These corrections ensure that the Standards reflect decisions of the AASB regarding Tier 2 requirements.</p> <p>The Standard also extends relief from consolidation and the equity method (in the new Consolidation and Joint Arrangements Standards) to entities complying with Australian Accounting Standards - Reduced Disclosure Requirements. There is no financial impact.</p>	1 Jul 2013

	<b>2013</b>	<b>2012</b>
	\$000	\$000
<b>6. EMPLOYEE BENEFITS EXPENSE</b>		
Wages and salaries <sup>(a)</sup>	14,342	13,778
Superannuation – defined contribution plans <sup>(b)</sup>	1,556	1,452
Annual leave	1,308	1,251
Long service leave	486	349
Other related expenses	125	95
	<b>17,817</b>	<b>16,925</b>

(a) Includes the value of the fringe benefit to the employee plus the fringe benefits tax component.

(b) Defined contribution plans include West State, Gold State and GESB Super Scheme (contributions paid).

Employment on-costs such as workers' compensation insurance are included at Note 10 'Other expenses'.

## 7. SUPPLIES AND SERVICES

Consultants and contractors	2,124	4,452
Consumables	747	656
Insurance premiums	445	380
Advertising	315	381
Repairs and maintenance	318	469
Exhibition fees	786	541
Freight and cartage	243	270
Lease and hire costs	281	280
Travel	306	356
Communications	179	175
Printing	204	165
Sundry equipment	135	113
Legal fees	2	3
Other	256	251
	<b>6,341</b>	<b>8,492</b>

## 8. DEPRECIATION AND AMORTISATION EXPENSE

### Depreciation

Buildings	1,708	1,800
Plant and equipment	452	669
<b>Total depreciation</b>	<b>2,160</b>	<b>2,469</b>

### Amortisation

Leasehold improvements	272	273
Intangibles	-	-
<b>Total amortisation</b>	<b>272</b>	<b>273</b>

<b>Total depreciation and amortisation</b>	<b>2,432</b>	<b>2,742</b>
--	--------------	--------------

	<b>2013</b>	<b>2012</b>
	\$000	\$000
<b>9. ACCOMMODATION EXPENSES</b>		
Utilities	1,868	1,379
Repairs and maintenance	394	1,213
Cleaning	366	401
Security	259	277
Other	124	118
	<b>3,011</b>	<b>3,388</b>
<b>10. OTHER EXPENSES</b>		
Workers' compensation insurance	265	240
Other	184	77
	<b>449</b>	<b>317</b>
<b>11. USER CHARGES AND FEES</b>		
User charges	805	696
Fees	846	992
	<b>1,651</b>	<b>1,688</b>
<b>12. TRADING PROFIT</b>		
Sales	2,361	1,129
Cost of sales:		
Opening inventory	(850)	(930)
Purchases	(721)	(567)
	(1,571)	(1,497)
Closing inventory	905	850
Cost of goods sold	(666)	(647)
<b>Trading Profit</b>	<b>1,695</b>	<b>482</b>
<b>13. COMMONWEALTH GRANTS AND CONTRIBUTIONS</b>		
Recurrent	210	548
	<b>210</b>	<b>548</b>
Included in recurrent grants are non-reciprocal grants received from various Commonwealth providers with remaining unspent funds as follows:		
Australian Biological Research Study	7	37
Commonwealth Scientific and Industrial Research Organisation	86	117
Department of Sustainability, Environment, Water, Population and Communities	86	171
Department of Environment, Water, Heritage and the Arts	-	44
Department of Innovation, Industry, Science and Research	-	7
Online Zoological Collections of Australian Museums	37	37
	<b>216</b>	<b>413</b>



	2013 \$000	2012 \$000
<b>14. INTEREST REVENUE</b>		
Interest revenue	85	155
	<b>85</b>	<b>155</b>
<b>15. OTHER REVENUE</b>		
Donations and contributions	2,492	3,898
Grants and subsidies	175	642
Recoups of expenditure	1,338	394
Royalties	1	1
Other revenue	35	100
	<b>4,041</b>	<b>5,035</b>
<b>16. INCOME FROM STATE GOVERNMENT</b>		
Appropriation received during the year:		
Service appropriation <sup>(a)</sup>	7,564	7,075
	<b>7,564</b>	<b>7,075</b>
Resources received free of charge <sup>(b)</sup>		
Determined on the basis of the following estimates provided by agencies:		
Department of Culture and the Arts		
Salaries and related costs and minor equipment	15,985	15,673
Francis Street building demolition / New Museum business case	-	2,577
State Solicitor's Office	2	-
	<b>15,987</b>	<b>18,250</b>
State grants and contributions <sup>(c)</sup>	1,305	34
	<b>1,305</b>	<b>34</b>
<b>Total income from State Government</b>	<b>24,856</b>	<b>25,359</b>

(a) Service appropriations fund the net cost of services delivered. Appropriation revenue comprises a cash component and a receivable (asset). The receivable (holding account) comprises the depreciation expense for the year and any agreed increase in leave liability during the year.

(b) Assets or services received free of charge or for nominal cost are recognised as revenue at fair value of the assets and/or services that can be reliably measured and which would have been purchased if they were not donated. Contributions of assets or services in the nature of contributions by owners are recognised direct to equity.

(c) Included in State grants and contributions are non-reciprocal grants received from various State Government providers with remaining unspent funds as follows:

Department of Culture and the Arts	83	72
Department of Environment and Conservation	1,243	246
LANDCORP	-	34
Water Corporation	-	1
Gascoyne Development Commission	1	-

	<b>2013</b>	<b>2012</b>
	\$000	\$000
<b>17. RESTRICTED CASH AND CASH EQUIVALENTS</b>		
<b>Current</b>		
Specific purpose grant funds <sup>(a)</sup>	2,415	1,991
	<b>2,415</b>	<b>1,991</b>

(a) Cash held in these accounts includes specific purpose account balances and unspent specific purpose grants.

## 18. INVENTORIES

### Current

Inventories held for resale:

Finished goods (at cost)

– Museum publications	348	436
– Museum shops' stock	547	414
	<b>905</b>	<b>850</b>

## 19. RECEIVABLES

### Current

Receivables	381	357
Accrued interest	27	25
GST receivable	3	100
<b>Total current</b>	<b>411</b>	<b>482</b>

The Western Australian Museum does not hold any collateral or other credit enhancements as security for receivables.

## 20. AMOUNTS RECEIVABLE FOR SERVICES

Current	-	-
Non-current	27,839	25,095
	<b>27,839</b>	<b>25,095</b>

Represents the non-cash component of service appropriations. It is restricted in that it can only be used for asset replacement or payment of leave liability.

## 21. OTHER CURRENT ASSETS

Prepayments	-	3
Other	-	-
	<b>-</b>	<b>3</b>

	2013 \$000	2012 \$000
<b>22. PROPERTY, PLANT AND EQUIPMENT</b>		
<b>Land</b>		
At fair value <sup>(a)</sup>	27,226	27,140
Accumulated impairment losses	-	-
	<b>27,226</b>	<b>27,140</b>
<b>Buildings</b>		
At fair value <sup>(a)</sup>	61,521	64,891
Accumulated depreciation	-	-
Accumulated impairment losses	-	-
	<b>61,521</b>	<b>64,891</b>
<b>Buildings under construction</b>		
Construction costs	-	-
	-	-
<b>Leasehold Improvements</b>		
At cost	10,892	10,892
Accumulated amortisation	(2,543)	(2,270)
Accumulated impairment losses	-	-
	<b>8,349</b>	<b>8,622</b>
<b>Computers, plant, equipment and transport</b>		
At cost	4,658	4,481
Accumulated depreciation	(3,758)	(3,520)
Accumulated impairment losses	-	-
	<b>900</b>	<b>961</b>
<b>Furniture and fittings</b>		
At cost	4,968	4,616
Accumulated depreciation	(4,352)	(4,151)
Accumulated impairment losses	-	-
	<b>616</b>	<b>465</b>
	<b>98,612</b>	<b>102,079</b>

- (a) Land and buildings were revalued as at 1 July 2012 by the Western Australian Land Information Authority (Valuation Services). The valuations were performed during the year ended 30 June 2013 and recognised at 30 June 2013. In undertaking the revaluation, fair value of land and buildings was determined on the basis of depreciated replacement cost.

Reconciliations of the carrying amounts of property, plant, equipment and vehicles at the beginning and end of the reporting period are set out in the tables below.

	Land	Buildings	Buildings under construction	Leasehold improvements	Computers, plant, equipment and vehicles	Furniture and fittings	Total
	\$000	\$000	\$000	\$000	\$000	\$000	\$000
<b>2013</b>							
Carrying amount at start of year	27,140	64,891	-	8,622	961	465	102,079
Additions	-	-	-	-	189	352	541
Transfers	-	-	-	-	-	-	-
Other disposals	-	-	-	-	-	-	-
Revaluation increments/ (decrements)	86	(1,662)	-	-	-	-	(1,576)
Impairment losses	-	-	-	-	-	-	-
Impairment losses reversed	-	-	-	-	-	-	-
Depreciation	-	(1,708)	-	(273)	(250)	(201)	(2,432)
<b>Carrying amount at end of year</b>	<b>27,226</b>	<b>61,521</b>	<b>-</b>	<b>8,349</b>	<b>900</b>	<b>616</b>	<b>98,612</b>

	Land	Buildings	Buildings under construction	Leasehold improvements	Computers, plant, equipment and vehicles	Furniture and fittings	Total
	\$000	\$000	\$000	\$000	\$000	\$000	\$000
<b>2012</b>							
Carrying amount at start of year	31,151	70,192	-	9,007	851	801	112,002
Additions	-	-	-	-	353	32	385
Transfers	-	-	-	(112)	112	49	49
Other disposals	-	-	-	-	(103)	-	(103)
Revaluation increments/ (decrements)	(4,011)	(3,501)	-	-	-	-	(7,512)
Impairment losses	-	-	-	-	-	-	-
Impairment losses reversed	-	-	-	-	-	-	-
Depreciation	-	(1,800)	-	(273)	(252)	(417)	(2,742)
<b>Carrying amount at end of year</b>	<b>27,140</b>	<b>64,891</b>	<b>-</b>	<b>8,622</b>	<b>961</b>	<b>465</b>	<b>102,079</b>

	<b>2013</b>	<b>2012</b>
	\$000	\$000
<b>23. MUSEUM COLLECTIONS</b>		
<b>Museum Collections</b>		
At fair value	635,175	633,666
At cost	2,453	2,434
Accumulated depreciation	-	-
Accumulated impairment losses	-	-
	<b>637,628</b>	<b>636,100</b>

**2013**

Carrying amount at start of year	636,100	633,212
Additions	19	2,888
Donations	1,509	-
Disposals	-	-
Transfers	-	-
Revaluation increments	-	-
<b>Carrying amount at end of year</b>	<b>637,628</b>	<b>636,100</b>

**24. IMPAIRMENT OF ASSETS**

There were no indications of impairment to property, plant and equipment and intangible assets at 30 June 2013.

The Western Australian Museum held no goodwill or intangible assets with an indefinite useful life during the reporting period. At the end of the reporting period there were no intangible assets not yet available for use.

**25. PAYABLES****Current**

Trade payables	88	239
Accrued expenses	4,072	3,263
GST payable	64	34
Other	134	108
<b>TOTAL PAYABLES</b>	<b>4,358</b>	<b>3,644</b>

**26. BORROWINGS****Current**

SEDO loan	-	19
<b>Total current</b>	<b>-</b>	<b>19</b>

Borrowings represent an interest free loan obtained from the Office of Energy to fund energy efficient building improvements. The last payment (\$18,664) was made in August 2012.



	2013 \$000	2012 \$000
<b>27. OTHER LIABILITIES</b>		
<b>Current</b>		
Income received in advance	-	-
Unclaimed monies	7	7
	<b>7</b>	<b>7</b>
<b>28. EQUITY</b>		
The Government holds the equity interest in the Western Australian Museum on behalf of the community. Equity represents the residual interest in the net assets of the Western Australian Museum. The asset revaluation surplus represents that portion of equity resulting from the revaluation of non-current assets.		
<b>CONTRIBUTED EQUITY</b>		
Balance at start of period	15,216	15,216
<b>Contributions by owners</b>		
Capital appropriation	-	-
<b>Distributions to owners</b>		
Transfer of net assets to other agencies:		
Transfer of amount receivable for services (holding account) to the Department of Culture and the Arts	-	-
<b>Total distributions to owners</b>	<b>-</b>	<b>-</b>
<b>Balance at end of period</b>	<b>15,216</b>	<b>15,216</b>
<b>RESERVES</b>		
<b>Asset revaluation surplus</b>		
Balance at start of period	499,495	507,007
Net revaluation increments/(decrements):		
Land	86	(4,011)
Buildings	(1,662)	(3,501)
Museum collections	-	-
<b>Balance at end of period</b>	<b>497,919</b>	<b>499,495</b>
<b>Accumulated surplus</b>		
Balance at start of period	248,646	247,243
Result for the period	2,439	1,403
<b>Balance at end of period</b>	<b>251,085</b>	<b>248,646</b>
<b>TOTAL EQUITY AT END OF PERIOD</b>	<b>764,220</b>	<b>763,357</b>

	2013 \$000	2012 \$000
<b>29. NOTES TO THE STATEMENT OF CASH FLOWS</b>		
<b>Reconciliation of cash</b>		
Cash at the end of the financial year as shown in the Statement of Cash Flows is reconciled to the related items in the Statement of Financial Position as follows:		
Cash and cash equivalents	775	427
Restricted cash and cash equivalents (Note 17 'Restricted cash and cash equivalents')	2,415	1,991
	<b>3,190</b>	<b>2,418</b>
<b>Reconciliation of net cost of services to net cash flows used in operating activities</b>		
Net cost of services	(22,417)	(23,956)
<b>Non-cash items:</b>		
Depreciation and amortisation expense <sup>(a)</sup>	2,432	2,742
Resources received free of charge <sup>(b)</sup>	15,987	18,250
Assets assumed – consumables (minor equipment) <sup>(b)</sup>	-	-
Donations to collection <sup>(c)</sup>	(1,528)	(2,888)
Adjustment for other non-cash items	-	-
<b>(Increase)/decrease in assets:</b>		
Current receivables <sup>(d)</sup>	(26)	927
Current inventories	(55)	80
Other assets	3	(3)
<b>Increase/(decrease) in liabilities:</b>		
Current payables <sup>(d)</sup>	757	1,250
Other current liabilities	-	(41)
Borrowings	(19)	-
Net GST receipts/(payments) <sup>(e)</sup>	(447)	(364)
Change in GST in receivables/payables <sup>(f)</sup>	40	(75)
<b>Net cash used in operating activities</b>	<b>(5,273)</b>	<b>(4,078)</b>

(a) See Note 8 'Depreciation and amortisation expense'.

(b) See Note 16 'Income from State Government'.

(c) See Note 23 'Museum collections'.

(d) Note that the Australian Taxation Office receivable/payable in respect of GST and the receivable/payable in respect to the sale/purchase of non-current assets are not included in these items as they do not form part of the reconciling items.

(e) This is the net GST paid/received, i.e. cash transactions.

(f) This reverses out the GST in receivables and payables.

	<b>2013</b>	<b>2012</b>
	\$000	\$000
<b>30. COMMITMENTS</b>		
<b>Lease commitments</b>		
Commitments in relation to leases contracted for at the end of the reporting period but not recognised in the financial statements are payable as follows:		
Within 1 year	39	41
Later than 1 year and not later than 5 years	75	44
	<b>114</b>	<b>85</b>
Representing:		
Non-cancellable operating leases	114	85
	<b>114</b>	<b>85</b>

The 12 motor vehicle leases (2012: 13 leases) are considered non-cancellable operating leases with lease expenditure payable monthly in advance. These commitments are all inclusive of GST.

### 31. CONTINGENT LIABILITIES AND CONTINGENT ASSETS

At the reporting date, the Western Australian Museum had no contingent liabilities or assets.

### 32. EVENTS OCCURRING AFTER THE END OF THE REPORTING PERIOD

There are no significant events occurring after the end of the reporting period that would have a material financial effect on the financial statements of the Western Australian Museum.

### 33. EXPLANATORY STATEMENT

This statement provides details of any significant variations between estimates and actual results for 2013 and between the actual results for 2012 and 2013. Significant variations are considered to be those greater than 10% and \$100,000.

#### Significant variances between estimated and actual result for 2013

	<b>2013</b>	<b>2013</b>	<b>Variation</b>
	Estimate	Actual	Over/(Under)
	\$000	\$000	\$000
<b>Expenses</b>			
Supplies and services	8,363	6,341	(2,022)
Depreciation and amortisation expense	2,744	2,432	(312)
<b>Income</b>			
User charges and fees	1,594	2,361	(767)
Commonwealth grants and contributions	4	210	(206)
Other revenue	3,088	4,041	(953)
Service appropriation	4,759	7,564	(2,805)
Resources received free of charge	16,946	15,987	959

### Supplies and services

The primary actual cost reduction compared to estimate was reduced consultants and contractors (\$2.305 million). This is attributed to the imposed budgetary measures placed on the Museum. A flow on from these measures was that new Museum works, which was a significant part of this balance were delayed, such that, they were not completed within the 2012–13 financial year.

### Depreciation and amortisation expense

The estimated depreciation and amortisation varies from the actual, due primarily to the revaluation of buildings undertaken for the 2012–13 financial year. The downwards revaluation of the buildings provided a write-back of depreciation.

### Sales

The positive variance in sales compared to the estimate is primarily attributed to the success of exhibition ticket sales, where *Unveiled* has contributed \$0.420 million in ticket sales, and *Secrets of the Afterlife* ticket sales has provided \$0.169 million. There are also additional shop sales attributed to the success of these exhibitions.

### Commonwealth grants and contributions

Commonwealth grants and contributions are difficult to estimate, since many of the Commonwealth grants are provided on a 'one-off' basis. The original estimate was based on known Commonwealth grants. However, two new grants were provided through the year (NHL Batavia Management Plan, from DEWHA, and DSEWPAC HSP) that were not included in the estimate.

### Other revenue

Other revenue is greater than estimated due to the recognition in 2013 of items donated to the Museum Collection of \$1.509 million. Additionally, the Museum received recoups from the Department of Culture and the Arts for work undertaken by the Museum and funded by the Department.

### Service appropriation

The Western Australian Museum sought and received a Treasurer's Advance to ensure it had sufficient cash funding to cover the operations of the Museum and the restricted funds balance of the Museum. Subsequently, an appropriation was sought and received to cover the amount of the Treasurer's Advance (\$2.805 million).

### Resources received free of charge

Resources received free of charge includes funding from the Department of Culture and the Arts. The estimated resources received free of charge was affected by the efficiency dividend and FTE ceiling reduction (\$2.673 million). These changes to the appropriation occurred after the setting of the 2012–13 budget estimate.

### Significant variances between actual results for 2012 and 2013

	2013 \$000	2012 \$000	Variation Over/(Under) \$000
<b>Expenses</b>			
Supplies and services	6,341	8,492	2,151
Depreciation and amortisation expense	2,432	2,742	310
Other expenses	449	317	(132)
<b>Income</b>			
Sales	2,361	1,129	1,232
Commonwealth grants and contributions	210	548	(338)
Resources received free of charge	15,987	18,250	(2,263)
State grants and contributions	1,305	34	1,271

### Supplies and services

The primary cost reduction in 2013 compared to 2012 was the reduced consultants and contractors (\$2.305 million). This is attributed to the imposed budgetary measures placed on the Museum. A flow on from these measures was that new Museum works, which was a significant part of this balance were delayed, such that, they were not completed within the 2012–13 financial year. This savings is offset by increased supplies and services related to exhibitions.

### Depreciation and amortisation expense

The 2013 depreciation and amortisation varies from 2012, due primarily to the revaluation of buildings undertaken for the 2012–13 financial year. The downwards revaluation of the buildings provided a write-back of depreciation.

### Other expenses

The primary other expenses in 2013 compared to 2012 was the charging of 'on-costs' to Western Australian Museum non-restricted projects. An reciprocal revenue amount is with the 'other revenue' account.

### Sales

The positive variance in sales compared to 2012 is primarily attributed to the success of exhibition ticket sales, where *Unveiled* has contributed \$0.420 million in ticket sales, and *Secrets of the Afterlife* ticket sales has provided \$0.169 million. There are also additional shop sales attributed to the success of these exhibitions.

### Commonwealth grants and contributions

The change in Commonwealth grants is attributed to successful 'one-off' grants received in 2012 and not recurring in 2013.

### Resources received free of charge

Resources received free of charge includes funding from the Department of Culture and the Arts. The estimated resources received free of charge was affected by the efficiency dividend and FTE ceiling reduction (\$2.673 million). These changes to the appropriation occurred after the setting of the 2012–13 budget estimate.

### State grants and contributions

The increase in State grants and contributions in 2013 compared to 2012 is primarily attributed to the receipt of the one-off Gorgon Net Conservation Benefits grant for \$1.091 million.

## 34. FINANCIAL INSTRUMENTS

### a) Financial risk management objectives and policies

Financial instruments held by the Western Australian Museum are cash and cash equivalents, restricted cash and cash equivalents, loans and receivables, borrowings and payables. The Western Australian Museum has limited exposure to financial risks. The Western Australian Museum's overall risk management program focuses on managing the risks identified below.

**Credit risk**

Credit risk arises when there is the possibility of the Western Australian Museum's receivables defaulting on their contractual obligations resulting in financial loss to the Western Australian Museum.

The maximum exposure to credit risk at end of the reporting period in relation to each class of recognised financial assets is the gross carrying amount of those assets inclusive of any allowance for impairment as shown in the table at Note 33(c) 'Financial instrument disclosures' and Note 19 'Receivables'.

Credit risk associated with the Western Australian Museum's financial assets is minimal because the main receivable is the amounts receivable for services (holding account). For receivables other than government, the Western Australian Museum trades only with recognised, creditworthy third parties. The Western Australian Museum has policies in place to ensure that sales of products and services are made to customers with an appropriate credit history. In addition, receivable balances are monitored on an ongoing basis with the result that the Western Australian Museum's exposure to bad debts is minimal. At the end of the reporting period there were no significant concentrations of credit risk.

**Liquidity risk**

Liquidity risk arises when the Western Australian Museum is unable to meet its financial obligations as they fall due.

The Western Australian Museum is exposed to liquidity risk through its trading in the normal course of business.

The Western Australian Museum has appropriate procedures to manage cash flows including drawdowns of appropriations by monitoring forecast cash flows to ensure that sufficient funds are available to meet its commitments.

**Market risk**

Market risk is the risk that changes in market prices such as foreign exchange rates and interest rates will affect the Western Australian Museum's income or the value of its holdings of financial instruments. The Western Australian Museum does not trade in foreign currency and is not materially exposed to other price risks.

The Western Australian Museum's borrowings were obtained through an interest free loan from the Office of Energy. All cash and cash equivalents (except for cash floats) are interest bearing as noted at Note 33(c) 'Financial Instrument Disclosures', however the exposure to market risk for changes in interest rates is minimal as the Western Australian Museum does not rely on interest income for its principal operating activities

**b) Categories of financial instruments**

The carrying amounts of each of the following categories of financial assets and financial liabilities at the end of the reporting period are:

	<b>2013</b>	<b>2012</b>
	\$000	\$000
<b>Financial Assets</b>		
Cash and cash equivalents	775	427
Restricted cash and cash equivalents	2,415	1,991
Loans and receivables <sup>(a)</sup>	28,247	25,520
	<b>31,437</b>	<b>27,938</b>
<b>Financial Liabilities</b>		
Financial liabilities measured at amortised cost	4,294	3,662
	<b>4,294</b>	<b>3,662</b>

(a) The amount of loans and receivables excludes GST recoverable from the ATO (statutory receivable).



### c) Financial instrument disclosures

#### Credit risk and interest rate risk exposure

The following table discloses the Western Australian Museum's exposure to credit risk and the ageing analysis of financial assets. The Western Australian Museum's maximum exposure to credit risk at the end of the reporting period is the carrying amount of financial assets as shown below. The table discloses the ageing of financial assets that are past due but not impaired and impaired financial assets. The table is based on information provided to senior management of the Western Australian Museum.

The Western Australian Museum does not hold any collateral as security or other credit enhancements relating to the financial assets it holds.

#### Aged analysis of financial assets

	Carrying Amount \$000	Not past due and not impaired \$000	Past due but not impaired					Impaired financial assets \$000
			Up to 1 mth \$000	1–3 mths \$000	3 mths to 1 yr \$000	1–5 yrs \$000	More than 5 yrs \$000	
<b>Financial Assets</b>								
<b>2013</b>								
Cash and cash equivalents	775	775	-	-	-	-	-	-
Restricted cash and cash equivalents	2,415	2,415	-	-	-	-	-	-
Receivables <sup>(a)</sup>	408	261	98	3	18	28	-	-
Amounts receivable for services	27,839	27,839	-	-	-	-	-	-
	<b>31,437</b>	<b>31,290</b>	<b>98</b>	<b>3</b>	<b>18</b>	<b>28</b>	-	-
<b>2012</b>								
Cash and cash equivalents	427	427	-	-	-	-	-	-
Restricted cash and cash equivalents	1,991	1,991	-	-	-	-	-	-
Receivables <sup>(a)</sup>	382	177	50	111	44	-	-	-
Amounts receivable for services	25,095	25,095	-	-	-	-	-	-
	<b>27,895</b>	<b>27,690</b>	<b>50</b>	<b>111</b>	<b>44</b>	-	-	-

(a) The amount of receivables excludes GST recoverable from the ATO (statutory receivable)

### Liquidity risk and interest rate exposure

The following table details the Western Australian Museum's interest rate exposure and the contractual maturity analysis for financial liabilities. The maturity analysis section includes interest and principal cash flows. The interest rate exposure section analyses only the carrying amounts of each item.

### Interest rate exposure and maturity analysis of financial liabilities

	Interest rate exposure					Nominal Amount	Maturity date				
	Weighted Average Effective Interest Rate	Carrying Amount	Fixed Interest Rate	Variable interest rate	Non-interest bearing		Up to 1 mth	1-3 mths	3 mths to 1 yr	1-5 yrs	More than 5 yrs
<b>2013</b>	%	\$000	\$000	\$000	\$000	\$000	\$000	\$000	\$000	\$000	\$000
<b>Financial assets</b>											
Cash and cash equivalents	3.4	775	-	705	70	775	-	-	-	-	-
Restricted cash and cash equivalents	3.4	2,415	-	2,415	-	2,415	-	-	-	-	-
Receivables <sup>(a)</sup>	-	408	-	-	408	408	98	3	18	28	-
Amounts receivable for services	-	27,839	-	-	27,839	27,839	-	-	-	-	-
		<b>31,437</b>	-	<b>3,120</b>	<b>28,317</b>	<b>31,437</b>	<b>98</b>	<b>3</b>	<b>18</b>	<b>28</b>	-
<b>Financial liabilities</b>											
Payables	-	4,358	-	-	4,358	4,358	-	-	-	-	-
Other Borrowings	-	-	-	-	-	-	-	-	-	-	-
		<b>4,358</b>	-	-	<b>4,358</b>	<b>4,358</b>	-	-	-	-	-

	Interest rate exposure					Nominal Amount	Maturity date				
	Weighted Average Effective Interest Rate	Carrying Amount	Fixed Interest Rate	Variable interest rate	Non-interest bearing		Up to 1 mth	1-3 mths	3 mths to 1 yr	1-5 yrs	More than 5 yrs
<b>2012</b>	%	\$000	\$000	\$000	\$000	\$000	\$000	\$000	\$000	\$000	\$000
<b>Financial assets</b>											
Cash and cash equivalents	4.7	427	-	402	25	427	-	-	-	-	-
Restricted cash and cash equivalents	4.7	1,991	-	1,991	-	1,991	-	-	-	-	-
Receivables <sup>(a)</sup>	-	382	-	-	382	382	50	111	44	-	-
Amounts receivable for services	-	25,095	-	-	25,095	25,095	-	-	-	-	-
		<b>27,895</b>	-	<b>2,393</b>	<b>25,502</b>	<b>27,895</b>	<b>50</b>	<b>111</b>	<b>44</b>	-	-
<b>Financial liabilities</b>											
Payables	-	3,644	-	-	3,644	3,644	-	-	-	-	-
Other Borrowings	-	19	-	-	19	19	-	19	-	-	-
		<b>3,663</b>	-	-	<b>3,663</b>	<b>3,663</b>	-	<b>19</b>	-	-	-

(a) The amount of receivables excludes GST recoverable from the ATO (statutory receivable)

### Interest rate sensitivity analysis

The following table represents a summary of the interest rate sensitivity of the Western Australian Museum's financial assets and liabilities at the end of the reporting period on the surplus for the period and equity for a 1% change in interest rates. It is assumed that the change in interest rates is held constant throughout the reporting period.

	-100 basis points			+100 basis points	
	Carrying amount	Surplus	Equity	Surplus	Equity
2013	\$000	\$000	\$000	\$000	\$000
<b>Financial assets</b>					
Cash and cash equivalents	775	(7.8)	(7.8)	7.8	7.8
Restricted cash and cash equivalents	2,415	(24.2)	(24.2)	24.2	24.2
<b>Financial liabilities</b>					
Payables	4,358	43.6	43.6	(43.6)	(43.6)
Other borrowings	-	-	-	-	-
Total increase/(decrease)		<b>11.6</b>	<b>11.6</b>	<b>(11.6)</b>	<b>(11.6)</b>

	-100 basis points			+100 basis points	
	Carrying amount	Surplus	Equity	Surplus	Equity
2012	\$000	\$000	\$000	\$000	\$000
<b>Financial assets</b>					
Cash and cash equivalents	427	(4.3)	(4.3)	4.3	4.3
Restricted cash and cash equivalents	1,991	(19.9)	(19.9)	19.9	19.9
<b>Financial liabilities</b>					
Payables	3,644	36.4	36.4	(36.4)	(36.4)
Other borrowings	19	0.2	0.2	(0.2)	(0.2)
Total increase/(decrease)		<b>12.4</b>	<b>12.4</b>	<b>(12.4)</b>	<b>(12.4)</b>

### Fair Values

All financial assets and liabilities recognised in the Statement of Financial Position, whether they are carried at cost or fair value, are recognised at amounts that represent a reasonable approximation of fair value unless otherwise stated in the applicable notes.

	<b>2013</b>	<b>2012</b>
	\$000	\$000
<b>35. REMUNERATION OF MEMBERS OF THE WESTERN AUSTRALIAN MUSEUM AND SENIOR OFFICERS</b>		
<b>Remuneration of members of the Western Australian Museum</b>		
The number of members of the Western Australian Museum, whose total of fees, salaries, superannuation, non-monetary benefits and other benefits for the financial year fall within the following bands are:		
\$0–\$10,000	9	8
Cash remuneration received in relation to 2013	37	27
Annual leave and long service leave accruals	-	-
Other benefits	-	-
<b>The total remuneration of members of the Western Australian Museum</b>	<b>37</b>	<b>27</b>

The total remuneration includes the superannuation expense incurred by the Western Australian Museum in respect of members of the Western Australian Museum.

#### **Remuneration of senior officers**

The number of senior officers, other than senior officers reported as members of the Western Australian Museum, whose total fees, salaries, superannuation, non-monetary benefits and other benefits for the financial year fall within the following bands are:

\$10,001–\$20,000	-	-
\$70,001–\$80,000	-	-
\$110,001–\$120,000	-	-
\$120,001–\$130,000	-	2
\$130,001–\$140,000	2	2
\$140,001–\$150,000	2	-
\$150,001–\$160,000	1	1
\$160,001–\$170,000	1	1
\$170,001–\$180,000	-	-
\$180,001–\$190,000	-	-
\$220,001–\$230,000	-	1
\$231,001–\$240,000	1	-
Cash remuneration received in relation to 2013	1,098	1,059
Annual leave and long service leave accruals	283	268
Other benefits	-	-
<b>The total remuneration of senior officers</b>	<b>1,381</b>	<b>1,327</b>

	2013 \$000	2012 \$000
--	---------------	---------------

### 36. REMUNERATION OF AUDITOR

Remuneration paid or payable to the Auditor General in respect of the audit for the current financial year is as follows:

Auditing the accounts, financial statements and performance indicators	37	36
	37	36

### 37. RELATED BODIES

At the reporting date, the Western Australian Museum had no related bodies.

### 38. AFFILIATED BODIES

At the reporting date, the Western Australian Museum had no affiliated bodies.

### 39. SUPPLEMENTARY FINANCIAL INFORMATION

#### (a) Write-offs

Debts written off by the Western Australian Museum during the financial year.	57	-
---	----	---

#### (b) Losses through theft, defaults and other causes

Losses of public moneys and public and other property through theft.	-	-
--	---	---

#### (c) Gifts of public property

Gifts of public property provided by the Western Australian Museum.	-	-
---	---	---

#### (d) Other supplementary information

The Western Australian Museum holds shares in a private company received in exchange for the Museum's support of specific projects. These shares are not recorded in the financial statements, as the measurement of the market value of the shares is not reliable.	-	-
--	---	---

### 40. INCOME AND EXPENSES BY SERVICE

For the financial year ended 30 June 2013, the Western Australian Museum operated under one service titled 'Museum Services' and therefore service information is reflected in the Statement of Comprehensive Income.

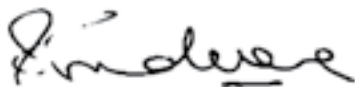
# CERTIFICATION OF KEY PERFORMANCE INDICATORS

FOR THE YEAR ENDED 30 JUNE 2013

We hereby certify that the key performance indicators are based on proper records, are relevant and appropriate for assisting users to assess the Western Australian Museum's performance, and fairly represent the performance of the Western Australian Museum for the financial year ended 30 June 2013.



Alan Robson  
Chair, Western Australian Museum Board of Trustees  
11 September 2013



Steve Scudamore  
Member, Western Australian Museum Board of Trustees  
11 September 2013



# DETAILED KEY PERFORMANCE INDICATORS INFORMATION

## Explanation

The Western Australian Museum annual budget is included in the budget statements under the outcome for the Department of Culture and the Arts.

The Department of Culture and the Arts co-ordinates reporting of key performance indicators at the whole of the Culture and the Arts portfolio level and reports aggregated amounts in its Annual Report. The structure aligns the portfolio and the Museum's desired outcomes with the government's Strategic Planning Framework.

## Government Desired Outcomes

Western Australia's natural, cultural and documentary collections are preserved, accessible and sustainable.

## Service

Museum Services

## KEY EFFECTIVENESS INDICATORS

### Preservation

Extent to which the State Collection that requires preservation is preserved.

*Note: Preservation of the entire "Collection" is not required, therefore this measure only relates to that part of the "Collection" that is required to be preserved.*

### Accessibility

Number of people using and accessing the State Collection.

Percentage of visitors satisfied with the services associated with accessing the Museum Collection.

### Sustainability

Value of the State Collection renewal, content development and/or expansion as a proportion of collection value.

## KEY EFFICIENCY INDICATOR

Service	Indicator
Museum Services	Average cost of Museum services per Museum visitor or person accessing collection

## KEY EFFECTIVENESS INDICATOR ONE – PRESERVATION

### INDICATOR

- Extent to which the Museum Collection, that requires preservation, is preserved

*Note: Preservation of the entire "Collection" is not required, therefore this measure only relates to that part of the "Collection" that is required to be preserved.*

### MEASUREMENT

The Museum has developed bench line data and reports the number of items added to the Collection each year.

Measurement of Indicator	2009–10	2010–11	2011–12	2012–13
Proportion of Collection stored in controlled environment	98.87%	98.91%	99.29%	99.29%
Number of items from the Collection described and recorded on the relevant data base	1,188,656 <sup>(1)</sup>	1,221,306	1,250,469	1,272,022

(1) The decline in the number of items described and recorded on electronic databases is owing to the gradual transfer of written register information into relevant electronic databases. The figures in the financial years (2007–08 and 2008–09) have included written information on register books, written information transferred to electronic databases, and information directly registered on electronic databases. Furthermore, the Museum databases objects and specimens in groups or lots i.e. one registration number may consist of one specimen/object or many. The development of an integrated collection management system is progressing.

Owing to the confidential nature of the cultural information associated with the Secret and Sacred Collection, it has neither been valued nor counted as part of the Museum collections, in accordance with wishes of the elders. However, the Anthropology department has the material documented.

## OBJECTS ADDED TO THE COLLECTION IN 2012–13

The table below documents the number of items added to the Collection 2012–13.

Items added to Collection	Terrestrial Zoology	Aquatic Zoology	Maritime History	Maritime Archaeology	Anthropology	Earth & Planetary Sciences	History	Total
July	1,280	146	33	5	5	-	-	1,469
August	699	546	830	51	5	1	8	2,140
September	390	252	642	11	3	-	38	1,336
October	605	480	31	-	30	-	3	1,149
November	373	564	293	22	2	-	4	1,258
December	357	78	428	8	20	126	3	1,020
January	119	1,080	53	31	2	7	1	1,293
February	1,609	2,052	2,520	1	-	28	1	6,211
March	674	794	166	1	22	20	235	1,912
April	729	398	94	14	16	-	-	1,251
May	499	534	108	5	-	57	23	1,226
June	603	452	136	39	58	-	-	1,288
<b>Total</b>	7,937	7,376	5,334	188	163	239	316	21,553

## KEY EFFECTIVENESS INDICATOR TWO – ACCESSIBILITY

### INDICATOR

- Number of people using and accessing the State Collection.
- Percentage of visitors satisfied with the services associated with using and accessing the State Collection.

### MEASUREMENT

This indicator measures the number of visitors to each of the Museum sites. It is argued that visitation reflects the ability of the Museum to provide relevant and engaging exhibitions and programs.

<b>Measurement of Indicator</b>	<b>2008–09</b>	<b>2009–10</b>	<b>2010–11</b>	<b>2011–12</b>	<b>Targets 2012–13</b>	<b>Actual 2012–13</b>
Number of visitors to Museum sites	819,729	817,966	819,508	887,594	844,464	879,145
Number of visitors to web site – unique visits	655,398	661,425	582,602	677,343	642,600	1,218,230 <sup>(2)</sup>
Percentage of visitors satisfied with the services of the Museum's sites	68%	65%	87%	87%	85%	97% <sup>(3)</sup>

## VISITOR SATISFACTION OVERALL VISIT JULY 2012 – JUNE 2013

Overall ratings of Museum Aspects

<b>2012–13<sup>(4)</sup></b>	<b>Total</b>	<b>Perth</b>	<b>Maritime</b>	<b>Shipwreck Galleries</b>	<b>Albany</b>	<b>Geraldton</b>	<b>Kalgoorlie-Boulder</b>
Very satisfied	62%	38%	61%	69%	82%	70%	69%
Satisfied	35%	56%	36%	29%	17%	28%	27%
Neither satisfied nor dissatisfied	2%	4%	2%	1%	0%	2%	3%
Dissatisfied	0%	1%	0%	-	0%	-	1%
Very dissatisfied	0%	0%	0%	-	-	0%	0%

## VISITOR SATISFACTION OVERALL VISIT JULY 2011 – JUNE 2012

Overall ratings of Museum Aspects

<b>2011–12</b>	<b>Total</b>	<b>Perth</b>	<b>Maritime</b>	<b>Shipwreck Galleries</b>	<b>Albany</b>	<b>Geraldton</b>	<b>Kalgoorlie-Boulder</b>
Dissatisfied	8%	14%	10%	6%	11%	7%	3%
Neither	3%	4%	4%	3%	5%	3%	0%
Satisfied	26%	29%	27%	28%	18%	28%	18%
Very Satisfied	61%	46%	57%	60%	64%	60%	77%
Not applicable/ Don't Know	3%	7%	3%	3%	2%	2%	2%

## VISITOR RATINGS OF PERMANENT EXHIBITIONS JULY 2012 – JUNE 2013

Permanent exhibition rating<sup>(5)</sup>

<b>2012–13</b>	<b>Total</b>	<b>Perth</b>	<b>Maritime</b>	<b>Shipwreck Galleries</b>	<b>Albany</b>	<b>Geraldton</b>	<b>Kalgoorlie- Boulder</b>
Very satisfied	59%	33%	58%	68%	67%	69%	70%
Satisfied	35%	53%	36%	30%	27%	28%	26%
Neither satisfied nor dissatisfied	3%	6%	3%	2%	1%	2%	2%
Dissatisfied	0%	1%	0%	0%	1%	-	-
Very dissatisfied	0%	0%	-	-	-	-	-

## VISITOR RATINGS OF GENERAL EXHIBITIONS JULY 2011 – JUNE 2012

General exhibition rating

<b>2011–12</b>	<b>Total</b>	<b>Perth</b>	<b>Maritime</b>	<b>Shipwreck Galleries</b>	<b>Albany</b>	<b>Geraldton</b>	<b>Kalgoorlie- Boulder</b>
Poor	7%	12%	8%	7%	10%	5%	2%
Average	4%	6%	6%	3%	7%	4%	1%
Good	30%	36%	29%	30%	30%	32%	26%
Excellent	56%	38%	52%	59%	45%	57%	68%
Not applicable	4%	8%	5%	2%	9%	2%	4%

- (2) The significant increase in unique visits to the Museum's website is attributed to the introduction of an online ticketing service for paid exhibitions and programs.
- (3) Note change in survey methodology and instrument from 2011–12 to 2012–13 to improve efficacy of data – change from self-selecting respondents using online kiosk to randomly selected semi-assisted. As a result caution should be exercised in making comparisons between 2011–12 and 2012–13 ratings.
- (4) Changes have also been made to rating descriptors in 2012–13.
- (5) In 2012–13 new survey instrument applies the term 'permanent' exhibitions. Previous survey instrument applied the term 'general' exhibitions. Changes have also been made to rating descriptors.

## COMPARATIVE ATTENDANCE FIGURES 2011–12 AND 2012–13

<b>Western Australian Museum – Perth</b>	<b>Overall visitors</b>	<b>School groups</b>	<b>Site total</b>
2011–12	398,816	23,121	421,937
2012–13	397,626	21,943	419,569
<b>Western Australian Museum – Maritime Museum Victoria Quay and Submarine</b>	<b>Overall visitors</b>	<b>School groups</b>	<b>Site total</b>
2011–12	112,894	12,849	125,743
2012–13	115,601	11,503	127,104
<b>Western Australian Museum – Shipwreck Galleries</b>	<b>Overall visitors</b>	<b>School groups</b>	<b>Site total</b>
2011–12	94,858	11,770	106,628
2012–13	95,716	13,150	108,866
<b>Western Australian Museum – Albany</b>	<b>Overall visitors</b>	<b>School groups</b>	<b>Site total</b>
2011–12	90,714	4,078	94,792
2012–13	85,916	4,157	90,073
<b>Western Australian Museum – Geraldton</b>	<b>Overall visitors</b>	<b>School groups</b>	<b>Site total</b>
2011–12	46,546	1,579	48,125
2012–13	41,430	1,701	43,131
<b>Western Australian Museum – Kalgoorlie-Boulder</b>	<b>Overall visitors</b>	<b>School groups</b>	<b>Site total</b>
2011–12	88,361	2,008	90,369
2012–13	88,515	1,887	90,402
<b>Annual Total</b>	<b>Overall visitors</b>	<b>School groups</b>	<b>Site total</b>
2011–12	832,189	55,405	887,594
2012–13	824,804	54,341	879,145



## MONTHLY VISITORS 2012 –13

	Perth	Maritime	Albany	Geraldton	Kalgoorlie-Boulder	Shipwreck Galleries	Total
July	47,960	10,451	6,309	5,711	9,462	8,946	88,839
August	23,840	8,051	6,002	3,412	8,252	7,892	57,449
September	27,838	11,172	6,547	3,869	9,724	9,115	68,265
October	45,390	20,310	8,437	5,239	9,932	11,182	100,490
November	21,879	10,679	7,653	3,196	6,415	9,494	59,316
December	23,815	8,737	6,586	2,999	5,476	8,395	56,008
January	47,827	11,191	12,050	3,681	7,074	9,683	91,506
February	48,456	7,041	7,033	1,547	4,469	6,672	75,218
March	35,936	9,380	7,725	3,472	6,931	8,966	72,410
April	30,569	11,429	9,294	3,550	8,790	9,485	73,117
May	27,762	9,432	7,422	3,359	6,930	8,071	62,976
June	38,297	9,231	5,015	3,096	6,947	10,965	73,551
<b>Total</b>	419,569	127,104	90,073	43,131	90,402	108,866	879,145

## KEY EFFECTIVENESS INDICATOR THREE – SUSTAINABILITY

### INDICATOR

- Value of Museum Collection renewal, content development and/or expansion as a proportion of the collection value.

### MEASUREMENT

This is calculated by dividing the value of the Collection by the income received from State Government, not including the capital user charge. The result will be a percentage figure that demonstrates the percentage of the Collection value spent annually by the Government in renewal, content development or expansion of the Collection.

It is proposed to benchmark this figure against other museum collections and to average the indicator over five years. The Collection was first valued in 2005–06 and was completely re-valued again in 2008–09.

<b>Year</b>	<b>Collection valuation</b>	<b>5 Year Rolling Average Income from the State Government</b>	<b>KEI</b>
2008–09 Actual	\$628,593,000	\$18,670,600	2.97%
2009–10 Actual	\$629,300,100	\$19,309,800	3.07%
2010–11 Actual	\$630,809,748	\$21,387,200	3.39%
2011–12 Actual	\$636,100,000	\$21,550,100	3.39%
2012–13 Target	\$636,212,000	\$22,381,000	3.52%
2012–13 Actual	\$637,625,537	\$23,018,000	3.61%

## KEY EFFICIENCY INDICATOR

Average cost of museum services per museum visitor or person accessing the Collection.

Access includes visitor attendance figures.

<b>Year</b>	<b>Cost per visitor</b>
2008–09 Actual	\$34.57
2009–10 Actual	\$37.56
2010–11 Actual	\$38.12
2011–12 Actual	\$36.63
2012–13 Target	\$38.49
2012–13 Actual	\$34.99 <sup>(6)</sup>

(6) Total cost of services \$30,765 million; Total visitation = 879,145.

# SUMMARY OF KEY PERFORMANCE INDICATORS

2012–13	Target	Actual	Variation
Outcome 1: Western Australia's natural, cultural and documentary collections are preserved, accessible and sustainable.			
<b>Key Effectiveness Indicator:</b> <b>Preservation:</b> Extent to which Western Australia's natural, cultural and documentary collections, that require preservation, are preserved.	98.08%	99.29%	0.21%
<b>Key Effectiveness Indicator:</b> <b>Accessibility:</b> The number of accesses to Western Australia's natural, cultural and documentary collections per capita.			
– Number of accesses <sup>(7)</sup>	1,487,064	2,097,375	610,311
– Accesses per capita <sup>(8)</sup>	0.623	0.848	0.225
Percentage of clients satisfied with the services associated with accessing Western Australia's natural, cultural and documentary collections <sup>(9)</sup> .	85%	97%	12%
<b>Key Effectiveness Indicator:</b> <b>Sustainability:</b> Value of the State Collection renewal, content development and/or expansion as a proportion of collection value. <sup>(10)</sup>	3.52%	3.61%	0.09%
<b>Key Efficiency Indicator:</b> Average cost of Museum services per Museum visitor or person accessing collection. <sup>(11)</sup>	\$38.49	\$34.99	\$3.50

(7) Total number of accesses is the total of visitors to Museum sites (879,145) and unique visits to [www.museum.wa.gov.au](http://www.museum.wa.gov.au) (1,218,230). It does not include visits to Western Australian Museum YouTube, Facebook or third party websites. Inclusive in overall unique visitors are individual video views (479,674), PDF downloads (1,549,757), web pages (21,958,404). The significant increase in total accesses for the year is attributed to a higher than expected number of visits to the Museum's website, driven by the introduction of an online ticketing service for paid exhibitions and programs.

(8) Accesses per capita are based on the number of accesses and Western Australian population of 2,473,000 as quoted on ABS Data table 3101.0 (WA) for December 2012.

(9) There has been a change in survey instrument and method of administration to improve the efficacy of the data – from self selection on an online kiosk to a randomly selected semi self administered survey.

(10) The variation from target to actual is due to the minimal movement in indexation for the Collection.

(11) Total cost of services = \$30,765 million. Total visitation = 879,145. This Key Performance Indicator excludes visits to [www.museum.wa.gov.au](http://www.museum.wa.gov.au) to provide a consistent methodology with the 2012–13 Target.

## OTHER FINANCIAL DISCLOSURES

### MAJOR CAPITAL PROJECTS INCOMPLETE

Lighting upgrade in *Katta Djinoong: first peoples of Western Australia* exhibition. This \$0.123 million project commenced in the 2012–13 financial year with some \$0.009 million spent to prepare the tender documentation. The remaining funds have been committed and the project is expected to be complete by end of September 2013.

The Museum expended some \$0.528 million to plan and prepare for the New Museum project which commences in earnest in the 2013–14 financial year. It should be noted that Department of Culture and the Arts manages this budget and overall expenditure in 2012–13 was \$1.603 million.

### MAJOR CAPITAL PROJECTS COMPLETED

Final piece of work to remediate the Perth site after the demolition of the Francis Street building – remediation of the Museum’s loading bay area – was completed this year. Overall the Demolition and Remediation project cost was \$6,186,928.

## GOVERNANCE DISCLOSURES

There are no matters to be disclosed in this reporting period with regards potential conflicts of interest or the Museum’s enabling legislation.

### GOVERNANCE FRAMEWORK

The Museum continues to operate under its Governance Framework which was endorsed by the Board of Trustees in 2012. The Finance and Audit Committee continues to assist the Board of Trustees to fulfill its oversight responsibilities relating to:

- the preparation and integrity of the Museum’s financial accounts and statements;
- internal controls, policies and procedures that the Museum uses to identify and manage business risks;
- the external auditor’s annual audit of the financial statements;
- the resources, performance and scope of work of the internal audit function; and
- the Museum’s compliance with legal, regulatory requirements and compliance policies.

# OTHER LEGAL REQUIREMENTS

## ADVERTISING

Expenditure on advertising, market research, polling and direct mail  
(*Electoral Act 1907, s175ZE*)

In accordance with Section 175ZE of the *Electoral Act 1907* expenditure by the Western Australian Museum on advertising and related costs is listed in the following table.

<b>Advertising organisations</b>			
Market research organisation	Morris Hargreaves McIntyre	\$86,706.00	
	Meerkats The Brand Leadership Company	\$15,224.00	
	Ipsos	\$9,350.00	\$111,280.00
<b>Polling organisations</b>			Nil
<b>Direct mail organisations</b>			Nil
<b>Media advertising organisations</b>			
Job vacancies	Adcorp Australia Limited	\$11,035.85	
	Integrity Staffing	\$3,681.90	\$14,717.75
<b>Media advertising organisations</b>			
Advertising	Abbott Printing Co	\$ 35,672.10	
	Bokay WA Pty Ltd	\$3,007.10	
	Department of Education – School Matters	\$ 8,800.00	
	Discus	\$30,667.00	
	Google	\$ 4,545.45	
	Imagesource	\$45,768.69	
	ITEM	\$ 7,500.00	
	Mitchell Communications	\$242,561.58	
	Perth Convention Bureau	\$5,400.00	
	Printlogic	\$5,688.30	
	Tourism Brochure Exchange	\$2,178.00	\$391,788.22
<b>Total advertising and related costs</b>			<b>\$517,785.97</b>

## DISABILITY ACCESS AND INCLUSION PLAN OUTCOMES

(*Disability Services Act 1993 (WA)* section 29(1) and Schedule 3 of the *Disability Services Regulations 2004*).

The Museum is committed to ensuring that people with disabilities, their families and their carers have the same opportunities, rights and responsibilities as others to access the range of services, information and facilities the Museum provides, as well as provide input into, and be consulted about, the development of a New Museum for Western Australia. Progress in 2012–13 towards meeting the desired outcomes of the Museum's Disability Access and Inclusion Plan is outlined below.

### **Outcome 1: People with disabilities have the same opportunities as other people to access the services of, and any events organised by, the Museum.**

- 
- The Museum's Exhibition and Design Team developed an Accessibility Checklist for the Museum's exhibitions. This requires elements of exhibitions to be benchmarked against best practice in terms of accessibility prior to the launch of the exhibition. The Accessibility Checklist was completed in relation to the *Secrets of the Afterlife* exhibition which opened at Perth site on 17 May 2013.
- 
- An Auslan smartphone app was employed during the exhibition *Unveiled: 200 years of Wedding Glamour*, open from 8 December 2012 to 2 April 2013 at the Museum's Perth site.
- 
- Text captioning was used for audio content in the *Secrets* and *Unveiled* exhibitions.
- 
- Live Auslan interpretation was used at public lectures related to the *Secrets* exhibition delivered by Dr John Taylor and Dr Alanah Buck and these lectures were well attended by members of the deaf community.
-

**Outcome 2: People with disabilities have the same opportunities as other people to access the buildings and other facilities of the Museum.**

- 
- The universal access path and ramp at the Museum's Kalgoorlie-Boulder site was improved and extended.
- 
- A universal access audit was completed for the Museum's public sites in Fremantle's the Maritime Museum and Shipwreck Galleries. The audit outcomes have been factored into capital works funding applications in 2013–14.
- 
- A scope of works and estimate of costs for replacement of the lift at the Shipwreck Galleries was completed.
- 

**Outcome 3: People with disabilities receive information from the Museum in a format that will enable them to access the information as readily as other people are able to access it.**

- 
- State Government access guidelines for promotional material and invitations (contained in the *State Government Access Guidelines for Information, Services and Facilities (2012)*) have been reformatted into a Museum document for use in published material.
- 
- The Museum's web team has reformatted the organisation's website to make it as consistent as possible with Web Content Accessibility Guideline (WCAG) v2.0 AA.
- 
- Information has been added to the Museum's internet site providing accessibility in relation to public sites, including information relating to ACROD parking bays, drop-off areas, use of guide and assistance dogs in the Museum, and Companion Cards.
- 

**Outcome 4: People with disabilities receive the same level and quality of service from staff of the Museum as other people receive from the staff of the Museum.**

- 
- Disability awareness training by trainers with disabilities was delivered to managers at the Museum during 2012–13. This training focused on encouraging managers to see the Museum from the perspective of people with disabilities and included a critical evaluation of the Maritime Museum from the perspective of the trainers. The nexus between accessibility and delivery of community value was also a key theme of the training.
-



- 
- Vision Awareness Training was conducted by a vision impaired trainer to a range of staff and volunteers during 2012–13. The training instilled a better understanding of the issues effecting people with visual impairment, covering challenges and solutions for those who provide assistance based on inclusive practice. A focus was on ensuring that interpretive delivery meets the standards required for vision impaired visitors to access Museum content.
- 

**Outcome 5: People with disabilities have the same opportunities as other people to make complaints about the Museum.**

- 
- The Museum is finalising a new policy on the making of Complaints, Comments and Compliments by all visitors to the Museum including those with disabilities. The policy ensures that complaint mechanisms are accessible for people with disabilities and can be made in a flexible manner.
- 

**Outcome 6: People with disabilities have the same opportunities as other people to participate in any public consultation by the Museum.**

- 
- A list of contacts at organisations, associations and for advocates representing people with disabilities has been incorporated into the Museum's Customer Relationship Management System and will be updated on an ongoing basis.
  - Terms of Reference for a New Museum Accessibility Panel were developed during 2012–13 and the Museum commenced the identification of Panel representation and membership.
  - The Department of Culture and the Arts conducted public consultation to provide Portfolio agencies input into their Disability Access and Inclusion Plans. The report on the consultation was factored into the development of the Museum's *Disability Access Inclusion Plan 2013–17*, which was finalised during 2012–13.
-

## COMPLIANCE WITH PUBLIC SECTOR STANDARDS AND ETHICAL CODES

*(Public Sector Management Act 1994, s31(1))*

*The Public Sector Management Act 1994* establishes a clear division of responsibility between a Chief Executive Officer and an 'employing authority' in the administration and management of public sector departments, agencies and organisations. The Department of Culture and the Arts is the 'employing authority' for Museum staff, with the exception that the Chief Executive Officer's 'employing authority' is the Public Sector Commissioner.

The Department of Culture and the Arts has continued educating the Culture and Arts Portfolio agencies workforce in Public Sector Standards and Public Sector Code of Ethics, ensuring legislative and public sector compliance is achieved.

The Department continued to record low instances of compliance breach claims. In the 2012–13 financial year, there were no breaches of the Public Sector Standards reported for the portfolio. Nor were there any substantiated breaches of the Code of Ethics or the Department's Code of Conduct during the same period.

2012–13 initiatives included educating staff through induction, compulsory Code of Conduct review and through continued supportive online tools.

### **Highlights:**

- The Department with the assistance of the AIMWA, delivered a manager induction program for all managers across the portfolio. Through this program, managers gained an understanding of the legislative and policy framework within Culture and the Arts and the WA Public Sector, including the importance of the manager's role and the responsibilities related to operational performance, financial and non-financial reporting and compliance.
- Accountability and Ethical Decision Making training commenced in the second half of the reporting period. 99 per cent of all portfolio staff, including regional staff, successfully completing the training with a minimum pass mark of 80 per cent, by June 30 2013. Museum employees had an average pass mark of 94.25 per cent.

## RECORDKEEPING PLANS

*(State Records Act 2000 & State Records Commission Standard 2, Principle 6)*

The Museum is required to report on the following measures with regard to its recordkeeping practices:

**Whether the efficiency and effectiveness of the organisation's recordkeeping systems have been evaluated or alternatively when such an evaluation is proposed.**

The Museum's Recordkeeping Plan details the recordkeeping systems and practices currently in place. The next complete review of the Plan is scheduled for 2014. In 2012, the Museum's Retention and Disposal Schedule was fully revised and updated. The revised schedule was approved by the State Records Commission in December 2012 and has now been implemented by the Museum.

**The nature and extent of the recordkeeping training program conducted by or for the organisation.**

Ongoing training and support for staff across the organisation is provided by the Museum's Records Management Unit. Newly developed training material and recordkeeping resources have been added to the Museum's intranet making such material available to all staff for the first time. During training sessions the roles and responsibilities of staff in regards to their recordkeeping obligations is reinforced.

**Whether the efficiency and effectiveness of the recordkeeping training program have been reviewed or alternatively when this is planned to be done.**

The main focus for recordkeeping training at this stage is staff use of the TRIM record management system (RMS). An assessment of fuller training needs/ requirements is planned in conjunction with the review of the Museum's Recordkeeping Plan in 2013–14.

**Assurance that the organisation's induction program addresses employee roles and responsibilities in regard to their compliance with the organisation's recordkeeping plan.**

The induction program for new Museum employees that is provided by the Department of Culture and the Arts addresses general recordkeeping responsibilities. Under the Museum's Recordkeeping Plan, the records management awareness training program – detailing responsibilities and recordkeeping practices – is compulsory for new employees.

# GOVERNMENT POLICY REQUIREMENTS

## SUBSTANTIVE EQUALITY

In the 2011–12 financial year, the Department of Culture and the Arts (DCA) established the Substantive Equality Reference Group which continues to provide advice to the portfolio on substantive equality and targeting community Arts and Culture needs. In the 2012–13 financial year, the new policy and communication plan for substantive equality progressed satisfactorily. Needs and Impact Assessments are continuing to help identify key areas to increase access to services, improve links in the wider community and increase staff awareness of Substantive Equality and how it contributes to service delivery and business activity.

## OCCUPATIONAL SAFETY, HEALTH AND INJURY MANAGEMENT

The Department of Culture and the Arts is committed to providing and maintaining a safe and healthy work environment for all of its employees, contractors and visitors. This is demonstrated through the development of policies, procedures and work practices to address hazards, to ensure that all employees are safe from injuries and risks to health while they are at work.

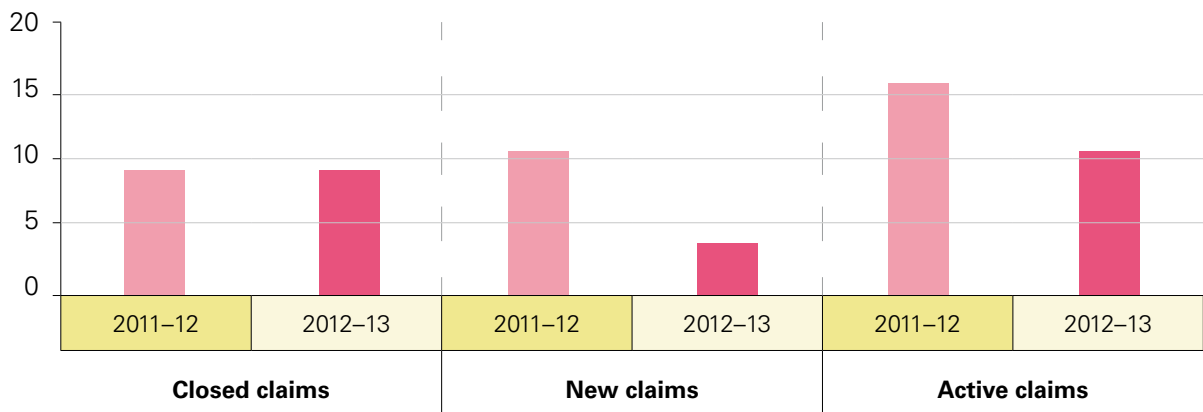
The Department and Portfolio agencies facilitate OSH consultation through systems including agency specific OSH committees, the election of safety representatives, a hazard and incident reporting process, routine workplace hazard inspections and a process for the resolution of OSH issues. Staff are made aware of these processes at their staff induction, through specific OSH training and by having access to OSH information on the intranet.

The policy and procedures of DCA and Portfolio agencies are compliant with the *Occupational Safety and Health Act 1984* and the *Workers Compensation and Injury Management Act 1981*. These procedures outline the department's commitment to assist employees to return to work after a work-related injury or disease. DCA engages in formal, documented programs for employees requiring modified duties and information on workers' compensation and injury management is provided to staff at induction and via the intranet.

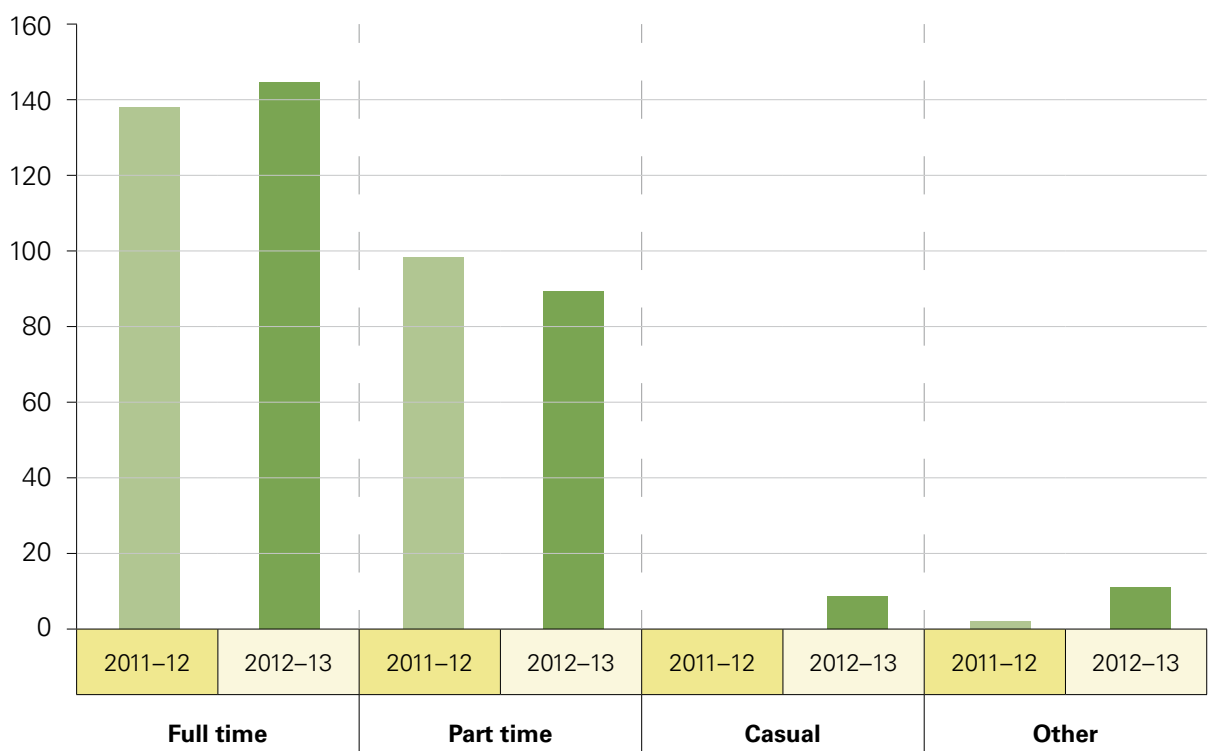
Three compensation claims were recorded during the financial year. This compares with 10 compensation claims recorded in 2011–12.

A review of the DCA’s OSH management system was undertaken formally in 2012 to ensure relevance and compliance to codes of practice and guidelines. An audit of both the DCA and the Portfolio agencies was completed using the WorkSafe Plan as the benchmark, with an implementation plan developed for 2013–15 to focus on recommendations in the areas of management commitment, planning, consultation, hazard management and training.

COMPARITIVE WORKERS’ COMPENSATION CLAIMS 2011–12 AND 2012–13



REPRESENTATION OF COMPARISON HEAD COUNT FOR 2011–12 AND 2012–13



## A REPORT OF ANNUAL PERFORMANCE FOR 2012–13

Measure	Actual Results		Results against Target	
	2010–11 <sup>(1)</sup>	2012–13	Target	Comment on Result
Number of fatalities	0	0	0	No change
Lost time injury and/or disease incidence rate	1.51	1.51	0 or 10% reduction	Met target
Lost time injury and/or disease severity rate	0	0	0 or 10% reduction	Met target
<b>Percentage of injured workers returned work:</b>				
(i) within 13 weeks	N/A	67%	Greater than or equal to 80%	One employee was unable to return to work on full duties within 13 weeks
(ii) within 26 weeks	N/A <sup>(2)</sup>	67%	Greater than or equal to 80%	One employee was unable to return to work on full duties within 26 weeks
(iii) within 28 weeks	0 <sup>(3)</sup>			
Percentage of managers trained in occupational safety, health and injury management responsibilities	Not recorded	56.31%	Greater than or equal to 80%	No comparative data available for 2010–11

(1) This is a three-year trend and as such the year is to be three years prior to current reporting year (i.e. current year is 2012–13 and comparison year is 2010–11).

(2) This breakdown not represented within 2010–11 table.

(3) Reported in 2010–11 annual report table.

# APPENDICES

## 2012–13 BOARD AND ADVISORY COMMITTEES

### WESTERN AUSTRALIAN MUSEUM BOARD OF TRUSTEES: PROFILE OF MEMBERS AND MEETING ATTENDANCE

The Western Australian Museum Board of Trustees met on five occasions during the 2012–13 period.

Name	Designation	Occupation	Initial Appoint.	Expiry	Meetings Attended
Emeritus Professor Alan Robson AO	Chairman	Academic	1/1/2012	31/12/2015	5/5
Sara Clifton	Trustee	Managing Director	25/9/2007	10/7/2016	5/5
Ian Fletcher	Trustee	Retired businessman	1/1/2012	31/12/2015	5/5
Dr Kate Gregory	Trustee	Historian	10/7/2012	10/7/2016	4/4
Steve Scudamore	Trustee	Company Chairman	24/10/2006	31/12/2015	4/5
Irene Stainton	Trustee	Chair – WAM Aboriginal Advisory Committee	13/12/2011	6/10/2013	3/5
Rubini Ventouras	Trustee	Group Executive Legal Affairs	10/7/2012	10/7/2016	2/4
Alan Ferris	Ex-Officio	A/Director General	Ex Officio	N/A	1/1

#### Board Members until December 2012

Emeritus Professor Alan Robson, Chair; Ms Sara Clifton, Vice-Chair; Mr Ian Fletcher; Dr Katherine (Kate) Gregory; Mr Steve Scudamore; Ms Irene Stainton; Mr Wayne Osborn (to 30 July 2012); Ms Rubini Ventouras; Ms Allanah Lucas, ex-officio.

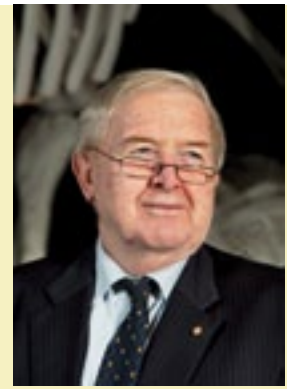
#### Board Members from January 2013

Emeritus Professor Alan Robson, Chair; Ms Sara Clifton, Vice-Chair; Mr Ian Fletcher; Dr Katherine (Kate) Gregory; Mr Steve Scudamore; Ms Irene Stainton; Ms Rubini Ventouras; Mr Alan Ferris, ex-officio (from 6 May 2013); Ms Allanah Lucas, ex-officio (to 3 May 2013).



EMERITUS PROFESSOR  
ALAN ROBSON AO CitWA,  
CHAIR OF THE TRUSTEES

Emeritus Professor Robson AO was Vice-Chancellor of the University of Western Australia from 2004 until 2012. Prior, he was Deputy Vice-Chancellor and Provost of the University from 1993.



He was also:

- Chair of the Group of Eight Universities from 2007–10.
- Deputy Chair of the Council of the National Library from 1998–2005.
- Deputy Chair of Universities Australia from 2009–11.
- Member of the Western Australian Science Council from 2003–09.
- Member of the Board of the CSIRO from 2003–08.

“A great WA Museum is essential for a great Western Australia because it displays and collects the essence of Western Australia and connects us with the world.”

In 2001 Emeritus Professor Robson chaired the Ministerial Taskforce on Structures, Services and Resources Supporting Government Schools. In 2003, he was made a Member of the Order of Australia and awarded a Centenary Medal and in 2009 he was made a Citizen of Western Australia. He was appointed Chair of the Museum’s Board of Trustees in 2012 following the retirement of Mr Tim Ungar. In 2013 Emeritus Professor Robson was made an Officer of the Order of Australia.

MS SARA CLAFTON, VICE-CHAIR

Ms Clifton completed a Bachelor of Commerce degree at the University of Western Australia and is a graduate of the Australian Institute of Company Directors. In addition to qualifications as a chartered accountant, she has extensive experience as a senior business journalist with media including *Business Review Weekly*, *The Australian* and *The West Australian*.



Currently, Ms Clifton is the Managing Director of Clifton Counsel, an investor and media relations consultancy. She also served as:

- General Manager at Porter Novelli Perth (now FTI Consulting).
- Manager of External Relations at ARC Energy Limited (Perth).
- Head of Investor and Media Relations at Publishing and Broadcasting Ltd (Sydney).
- National Public Affairs Manager at Multiplex Constructions.
- Board member of the UWA Club.

She was appointed as a Trustee of the Western Australian Museum in 2007 and Vice-Chair in 2012.

## MR ALAN FERRIS (EX OFFICIO FROM 6 MAY 2013)

Alan Ferris is the Acting Director General, Department of Culture and the Arts (DCA). His substantive position is General Manager, Perth Theatre Trust, a position he has held since 2008.

Prior to this he was Chief Financial Officer DCA, a role which also had responsibility for the Art Gallery of WA, Perth Theatre Trust, ScreenWest, State Library of WA, State Records Office and the WA Museum.

Alan has been a Trustee of the Swan Bells Foundation and recently retired as the Mayor of East Fremantle, a position he held for six years. He is a board member of the Palmerston Association and a member of the Leadership WA Finance Committee. As A/Director General he is a board member of the Art Gallery of WA, Perth Theatre Trust, ScreenWest, State Library of WA and WA Museum. Alan is a Chartered Accountant with a Bachelor of Commerce.



## MR IAN FLETCHER, TRUSTEE

Mr Fletcher has had more than 40 years' experience in the public and private sectors. He has served as First Assistant Secretary and State Director for a number of Australian Government departments, department head in the Tasmanian Government and CEO of the City of Kalgoorlie-Boulder.

As well he was:

- CEO of the Australian Chamber of Commerce in Canberra.
- Principal of Fletcher Rowe & Associates.
- Chief of Staff to WA Premier Richard Court;
- Principal Private Secretary to the Federal Minister for Social Security, Senator Fred Chaney.
- Vice President, External Affairs, BHP Billiton, Western Australia.
- Non-Executive Director of Horizon Power (current).
- Deputy Chair of the WA Australia Day Council (current).



**“The WA Museum gives us all a strong sense of place, of where we have come from over 50,000 years and where we are going in the future.”**

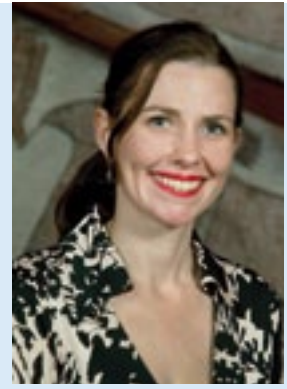
A Fellow of the Australian Institute of Management and a member of the Australian Institute of Company Directors, Mr Fletcher is also a Justice of the Peace. He is the immediate past Chairman of Miners' Promise (a resource workers legacy), is a Paul Harris Fellow (Rotary) and a Churchill Fellow.

He was appointed a Trustee of the Museum in 2012.

## DR KATHERINE (KATE) GREGORY

Dr Kate Gregory is the Battye Historian with the State Library of Western Australia, where she provides leadership for the JS Battye Library of West Australian History collections and services. Previously, she was:

- Historian with the National Trust of Australia (WA) managing historical research, oral history projects and developing interpretation and cultural heritage programs with communities around the State.
- On the State Committee of Museums Australia (WA), the national organisation for the museum's sector.
- Museum Manager and Curator of Claremont Museum.
- Worked at the National Gallery of Victoria during the development of the Ian Potter Centre: NGV Australia at Federation Square.



“For me, the Museum is about transformation, both on an individual and collective level, through its experiences, research and learning opportunities.”

Dr Gregory has a PhD in Art History from the University of Melbourne (2004) on contemporary art and interpretation in museum practice since 1970. Her postdoctoral research in Cultural Heritage at Curtin University culminated in a co-written book with Andrea Witcomb, *From the Barracks to the Burrup: the National Trust in Western Australia* (University of New South Wales Press, 2010). Dr Gregory was appointed a Trustee of the WA Museum in July 2012.

## MR STEVE SCUDAMORE

Mr Steve Scudamore has held a number of senior positions, including Chairman of the WA office of KPMG for eight and a half years and a senior partner with KPMG for 20 years specialising in the Energy and Natural Resources sector and Corporate Finance Services.

He serves as:

- Non-Executive Director on the Boards of Aquila Resources, Altona Mining and MDA Insurance.
- Chairman of not-for-profit organisation Amana Living (formerly the Anglican Homes group).

He is a Councillor to Curtin University and the Australian Institute of Company Directors. He was recently appointed as a special adviser to Lazard Australia.

He is a Fellow of the Institute of Chartered Accountants in Australia and England and Wales, Senior Fellow of the Financial Services Institute of Australia and Fellow of the Institute of Company Directors.



## MS IRENE STANTON

Ms Stainton works as the Senior Aboriginal Affairs Advisor at INPEX where she provides strategic policy advice relating to working with Aboriginal Australians.

Prior to working with INPEX, Ms Stainton worked as:

- General Manager at Australian Interaction Consultants.
- Executive Director of the Organisational Cultural Change Program at the Department of Community Development.
- Executive Director of the Family and Domestic Violence Unit and the Assistant Director within the Aboriginal Affairs Department.
- Registrar of Aboriginal Sites.
- Chairperson of the Aboriginal Cultural Material Committee.

Ms Stainton is the Chair of the Western Australian Museum's Aboriginal Advisory Committee, is the Deputy Chairperson of the Aboriginal Lands Trust Board, a member of the National Museum of Australia's Indigenous Advisory Committee. She is a past member of the Return of Indigenous Cultural Property Program Management Committee.

She has also previously served as a member of the United Nations Working Group on Indigenous Populations and as an Aboriginal Council member for the National Inquiry into the Separation of Aboriginal and Torres Strait Islander Children from their Families.

She was appointed a Trustee of the Museum in 2011 – her second term of office.



## MS RUBINI VENTOURAS

Ms Rubini Ventouras holds degrees in law and commerce (Accounting) from Murdoch University and is admitted to practice law. She is currently the Group Executive – Legal Affairs Asia Pacific at Newmont Asia Pacific across Australia, PNG, the Solomon Islands, New Zealand and the Netherlands.

She is also a member of Newmont Asia Pacific's Leadership Team which is responsible for operating four gold mines in Australia and New Zealand as well as a Director of the Newmont Australia group of companies. Previously, Ms Ventouras was:

- Senior Corporate Counsel with Newmont Asia Pacific in Jakarta and Perth.
- A lawyer (1999 to 2003) and Senior Associate (2004 to 2005) at Freehills.

She was appointed a Trustee of the WA Museum in July 2012.



*"The WA Museum is a place where people from different cultures and generations can connect with the rich history and diversity of Western Australia. I believe this is important because it creates a sense of pride in our State and a sense of belonging in our communities."*

## MEMBERS OF COMMITTEES

Committee	Members
The West Australian Museum Aboriginal Advisory Committee (WAMAAC)	Ms Irene Stainton – Chair Tony Calgaret, Carly Lane, John Mallard, Bev Port-Louis
Maritime Archaeology Advisory Committee	Prof. Geoffrey Bolton – Chair (to March 2013) Prof. John Penrose – Chair (from March 2013), Dr Andrea Gaynor, Joel Gilman, Barb Green, Don Newman, Dr Alistair Paterson, Mark Polzer, Ron Shephard, Aileen Walsh
Western Australian Museum – Maritime Advisory Committee	Ronald Packer – Chair Mrs Pat Barblett, Prof. Geoff Bolton, Hon Richard Court, Warwick Gately, David Lynn, Prof. Geoff Shellam, Eva Skira, Astrid Norgard, Dr Nonja Peters
Western Australian Museum – Geraldton Advisory Committee	Malcolm Smith – Chair Bob Urquhart, Mayor Ian Carter, Cr. Chris Gabelish, Dr Mort Harslett, Gary Martin, Marilyn McLeod, Trish Palmonari, Andrea Selvey
Western Australian Museum – Kalgoorlie-Boulder Advisory Committee	Laurie Ayers, Deborah Botica, Carol Mann, Barbara Piercey, Scott Wilson

## SPONSORS, BENEFACTORS AND GRANTING AGENCIES

Alcoa Foundation

Alcoa of Australia

Allen, Terry & Elizabeth

Apache Energy

APN Outdoor

Aquila Resources Ltd

Australia & Pacific Science Foundation

Australian Biological Resources Study

Australian Entomological Society

Australian Institute of Marine Science

Australian Institute of Maritime History

Australian Marine Mammal Centre



Australian Research Council	Friends of the Western Australian Museum
Beazley, Prof Lyn	Galaxy Resources
Bennelongia Pty Ltd	Geosciences Australia
BHP Billiton Iron Ore	Grunberg, Dr Max
Biota Environmental Sciences	Hawaiian
Broome International Airport	Hermon Slade Foundation
Butler Bequest	Heyder & Shears
Butler, Dr W H (Harry)	Hickman, Mrs Dallas
Census of Coral Reef Ecosystems	History of Migrant Experiences, Curtin University
Challenger Institute of Technology	HMAS Stirling, Royal Australian Navy
Channel Seven, Perth	Institute of Marine Engineering, Science and Technology
Chevron Australia	Jotun Australia Pty Ltd
Cliffs Natural Resources Inc	Kailis Bros Pty Ltd
Commonwealth Scientific and Industrial Research Organisation	Kailis Consolidated Pty Ltd
Cornelius, Mr David	Kailis Fisheries Holdings Pty Ltd
Curtin University	Kimberley Diamond Company
Dawkins, Prof Roger	Lauder & Howard Antiques & Fine Art
Department of Defence	McClements Foundation, The
Department of Environment and Conservation	McCusker Charitable Foundation
Department of Sustainability, Environment, Water, Population and Communities	McKenzies Auctioneers
DOF Subsea	Mercure Hotel
Embassy of the Kingdom of the Netherlands	MG Kailis Group
Estate of Shelagh Wakely	Moore Stephens
Fletcher, Mr Ian	Morgan, Mr Kevin and Mrs Patricia
Flinders University	Mount Gibson Iron Ltd
Forrest, Mr Andrew and Mrs Nicola	Murdoch University
	Muséum National d'Histoire Naturelle, Paris

National Geographic	Stopford, Ms Linley Rose
National Science Foundation	Submarine Institute of Australia
North West Shelf Shipping Service Company Pty Ltd	Subterranean Ecology
Osborn, Mr Wayne	University of Connecticut
Outback Ecology	University of Western Australia, The
Pilbara Iron	Verve Energy
Quest on James	Wesfarmers Arts
Sandfire Resources	West Australian Regional Newspapers
Singapore Airlines	West Australian, The
Singapore Airlines Cargo	Western Australian Marine Science Institution
Skywest Airlines	WMC — Sir Lindesay Clark Trust Fund
Smithsonian Institute	Woodside Energy Ltd
Speewah Metals	X Media Lab

The Western Australian Museum Foundation would also like to thank the many additional supporters who assisted the Museum with their kind contributions of up to \$1,000.



## 2012–13 TEMPORARY EXHIBITIONS

<b>Exhibition</b>	<b>Loaning Institute</b>	<b>Site</b>	<b>Start date</b>	<b>End date</b>
<i>Max Dupain on Assignment</i>	National Archives of Australia	Albany	07/07/12	23/09/12
<i>Now and Then</i>	ABC Open/Western Australian Museum	Albany	10/08/12	30/08/12
<i>Kiss My Camera 2012</i>	Western Australian Music Industry	Albany	26/09/12	22/10/12
<i>Restoring Hope</i>	Department for Communities	Albany	11/09/12	17/09/12
<i>ANZANG: Nature Photography 2012</i>	South Australian Museum	Albany	07/12/12	03/02/13
<i>Light-House (PIAF)</i>	MIX Artists/Western Australian Museum	Albany	09/02/13	04/03/13
<i>Ed Smidt – Photographer</i>	Smidt family/ Western Australian Museum	Albany	18/02/13	02/03/13
<i>Australian Nurses at War</i>	Western Australian Museum	Albany	11/03/13	28/04/13
<i>Men of the Kokoda</i>	Western Australian Museum	Albany	11/03/13	28/04/13
<i>Shreds Art</i>	Jenni Bourke	Albany	22/03/13	28/03/13
<i>Kinetic Kingdoms</i>	Lance Reid	Albany	20/04/13	03/05/13
<i>Line of Sight</i>	Peter Strain	Albany	03/05/13	23/06/13
<i>Seeing Change: A photographic story from Abrolhos fishers</i>	Western Australian Museum	Albany	26/06/13	21/07/13
<i>ANZANG: Nature Photography 2011</i>	South Australian Museum	Geraldton	17/05/12	15/07/12
<i>Now and Then</i>	ABC Open/Western Australian Museum	Geraldton	09/07/12	27/07/12

<b>Exhibition</b>	<b>Loaning Institute</b>	<b>Site</b>	<b>Start date</b>	<b>End date</b>
<i>2012 Clem Burns Heritage Awards: Sustainable Energy</i>	Western Australian Museum	Geraldton	11/07/12	19/08/12
<i>Murchison Widefield Array – Tile Display</i>		Geraldton	03/08/12	23/09/12
<i>Max Dupain on Assignment</i>	National Archives of Australia	Geraldton	04/10/12	18/11/12
<i>Dolls and Yarning: Yamaji dolls from Geraldton and Northampton</i>	Western Australian Museum/Geraldton Regional Community Education Centre	Geraldton	28/09/12	05/11/12
<i>Seeing Change: A photographic story from Abrolhos fishers</i>	Western Australian Museum	Geraldton	30/11/12	24/02/13
<i>Traversing Antarctica: the Australian Experience</i>	National Archives of Australia/Australian Antarctic Division/Western Australian Museum	Geraldton	16/03/13	26/05/13
<i>On their own: Britain's Child Migrants</i>	Australian National Maritime Museum	Maritime	19/05/12	14/08/12
<i>The Loss of the Koombana</i>	Western Australian Museum	Maritime	24/03/12	14/08/12
<i>Dinosaur Petting Zoo</i>	ERTH	Maritime	01/10/12	14/10/12
<i>Traversing Antarctica: the Australian Experience</i>	National Archives of Australia/Australian Antarctic Division/Western Australian Museum	Maritime	03/11/12	24/02/13
<i>ANZANG: Nature Photography 2012</i>	South Australian Museum	Maritime	08/06/13	04/08/13
<i>Kiss My Camera 2012</i>	Western Australian Music Industry	Perth	24/05/12	06/07/12
<i>Rockbreakers: Prisoners built this colony. Geology made it rich</i>	Fremantle Prison	Perth	18/05/12	11/11/12
<i>Dinosaur Petting Zoo</i>	ERTH	Perth	25/06/12	22/07/12

*Secrets of the Afterlife* exhibition.  
Western Australian Museum – Perth, 2013  
Image courtesy Sabine Alberts Photography.



<b>Exhibition</b>	<b>Loaning Institute</b>	<b>Site</b>	<b>Start date</b>	<b>End date</b>
<i>On the Outskirts: Allawah Grove Aboriginal Settlement</i>	Berndt Museum	Perth	07/07/12	14/10/12
<i>ANZANG: Nature Photography 2011</i>	South Australian Museum	Perth	27/07/12	19/08/12
<i>Yalangbara: Art of the Djang'kawu</i>	National Museum of Australia	Perth	01/09/12	04/11/12
<i>As Eye See It</i>	Department for Child Protection	Perth	02/10/12	14/10/12
<i>A Story to Tell</i>	Art on the Move	Perth	19/10/12	04/03/13
<i>Unveiled: 200 Years of Wedding Glamour</i>	Victoria and Andrew Museum	Perth	08/12/12	02/04/13
<i>PIAF</i>	Perth International Arts Festival	Perth	01/02/13	28/02/13
<i>One Hundred Postcards (ANZAC 2013 Special Event)</i>	Western Australian Museum	Perth	22/04/13	28/04/13
<i>Secrets of the Afterlife: Magic, Mummies and Immortality in Ancient Egypt</i>	British Museum	Perth	17/05/13	22/09/13
<i>An Everyday Transience</i>	University of Western Australia	Kalgoorlie-Boulder	12/05/12	21/10/12
<i>Now and Then</i>	ABC Open/Western Australian Museum	Kalgoorlie-Boulder	07/09/12	28/09/12
<i>This Working Life: the engines that put the Go! into the Goldfields</i>	Western Australian Museum	Kalgoorlie-Boulder	27/10/12	13/01/13
<i>Max Dupain on Assignment</i>	National Archives of Australia	Kalgoorlie-Boulder	18/01/13	24/03/13
<i>ANZANG: Nature Photography 2012</i>	South Australian Museum	Kalgoorlie-Boulder	29/03/13	01/06/13
<i>Traversing Antarctica: the Australian Experience</i>	National Archives of Australia/Australian Antarctic Division/Western Australian Museum	Kalgoorlie-Boulder	08/06/13	11/08/13
<i>Gilt Dragon</i>	Western Australian Museum	Shipwreck Galleries	17/04/13	20/10/13



*Yalangbara* exhibition. Western Australian Museum – Perth, 2013.  
Image courtesy *Pace Photography*.



## 2012–13 EXHIBITIONS CREATED AND MADE ACCESSIBLE BY THE WA MUSEUM AT NON-MUSEUM SITES<sup>1</sup>

Exhibition	Lending Institute	Venue	Dates	Visitations
<i>Traversing Antarctica: the Australian Experience</i>	Western Australian Museum/National Australian Archives/Australian Antarctic Division	National Australian Archives – Canberra	23/03/12–09/09/12	8,790
<i>Immerse: Exploring the Deep</i>	Western Australian Museum	Karratha	23/06/12–22/07/12	5,046
<i>Zuytdorp display</i>	Western Australian Museum	Kalbarri	01/06/12–01/12/12	4,000
<i>AC/DC: Australia's Family Jewels</i>	Arts Centre Melbourne/Western Australian Museum	Seattle, Washington – Experience Music Project	28/04/12–23/09/12	244,247
<i>The Loss of the Koombana</i>	Western Australian Museum/Port Hedland Historical Society	Port Hedland	20/03/12–permanent	1,800
<i>Immerse: Exploring the Deep</i>	Western Australian Museum	Perth Royal Show	29/09/12–06/10/12	56,377
				<b>320,260</b>

<sup>1</sup> The Museum presented exhibitions to non-museum sites in various locations WA-wide, interstate and internationally. The total number of visitations to exhibitions created and made accessible at non-museum sites for 2012–13 is 320,260.